

Spark Blue™ 574 anti-human CD45 Antibody

Catalog# / Size	368557 / 25 tests 368558 / 100 tests
Clone	2D1
Regulatory Status	RUO
Other Names	Leukocyte Common Antigen (LCA), T200
Isotype	Mouse IgG1, κ
Description	CD45 is a 180 - 240 kD single chain type I membrane glycoprotein also known as leukocyte common antigen (LCA) and T200. It is a tyrosine phosphatase expressed on the plasma membrane of all hematopoietic cells, except erythrocytes or platelets. CD45 is a signaling molecule that regulates a variety of cellular processes including cell growth, differentiation, cell cycle, and oncogenic transformation. CD45 plays a critical role in T and B cell antigen receptor-mediated activation by dephosphorylating substrates including p56Lck, p59Fyn, and other Src family kinases. CD45 non-covalently associates with lymphocyte phosphatase-associated phosphoprotein (LPAP) on T and B lymphocytes. CD45 has been reported to bind galectin-1 and to be associated with several other cell surface antigens including CD1, CD2, CD3, and CD4.

Product Details

Verified Reactivity	Human
Antibody Type	Monoclonal
Host Species	Mouse
Immunogen	Human PBMC
Formulation	Phosphate-buffered solution, pH 7.2, containing 0.09% sodium azide and BSA (origin USA)
Preparation	The antibody was purified by affinity chromatography and conjugated with Spark Blue™ 574 under optimal conditions.
Concentration	Lot-specific (to obtain lot-specific concentration, please enter the lot number in our Concentration and Expiration Lookup or Certificate of Analysis online tools.)
Storage & Handling	The antibody solution should be stored undiluted between 2°C and 8°C, and protected from prolonged exposure to light. Do not freeze.
Application	FC - Quality tested
Recommended Usage	Each lot of this antibody is quality control tested by immunofluorescent staining with flow cytometric analysis . For flow cytometric staining, the suggested use of this reagent is 5 µL per million cells in 100 µL staining volume or 5 µL per 100 µL of whole blood. It is recommended that the reagent be titrated for optimal performance for each application. * Spark Blue™ 574 has a maximum excitation of 506 nm and a maximum emission of 574 nm.
Excitation Laser	Blue Laser (488 nm)
Application Notes	It was found that the HI30 clone and the 2D1 clone can cross block each other's binding.
Application References	<ol style="list-style-type: none"> 1. Bradstock KF, <i>et al.</i> 1980. <i>J. Natl. Cancer Inst.</i> 65:33. 2. Csiba A, <i>et al.</i> 1984. <i>Br. J. Cancer</i> 50:699. 3. Tchilian EZ, <i>et al.</i> 2001. <i>J. Immunol.</i> 166:1308. 4. Lee MS, <i>et al.</i> 2004. <i>Int. Immunol.</i> 16:1109.
RRID	AB_2904402 (BioLegend Cat. No. 368557) AB_2904402 (BioLegend Cat. No. 368558)

Antigen Details

Structure	Type I transmembrane protein, 180 - 240 kD (multiple isoforms)
Distribution	Hematopoietic cells, except circulating erythrocytes or platelets.
Function	Tyrosine phosphatases, signaling, co-stimulation (co-inhibition), TCR and BCR mediated activation.
Ligand/Receptor	Galectin-1, CD2, CD3, and CD4.
Cell Type	B cells, Dendritic cells, Neutrophils
Biology Area	Cell Biology, Immunology, Inhibitory Molecules, Neuroscience, Neuroscience Cell Markers
Molecular Family	CD Molecules, Protein Kinases/Phosphatase, TCRs
Antigen References	1. Thomas M. 1989. <i>Annu. Rev. Immunol.</i> 7:339. 2. Trowbridge I, et al. 1994. <i>Annu. Rev. Immunol.</i> 12:85.
Gene ID	5788

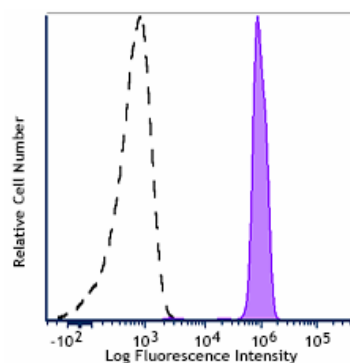
Related Protocols

[Cell Surface Flow Cytometry Staining Protocol](#)

Other Formats

Purified anti-human CD45, PerCP anti-human CD45, FITC anti-human CD45, PE anti-human CD45, APC anti-human CD45, Alexa Fluor® 700 anti-human CD45, APC/Cyanine7 anti-human CD45, PerCP/Cyanine5.5 anti-human CD45, APC/Fire™ 750 anti-human CD45, Alexa Fluor® 594 anti-human CD45, Brilliant Violet 510™ anti-human CD45, Brilliant Violet 421™ anti-human CD45, PE/Dazzle™ 594 anti-human CD45, Brilliant Violet 605™ anti-human CD45, PE/Cyanine7 anti-human CD45, Pacific Blue™ anti-human CD45, Alexa Fluor® 647 anti-human CD45, Biotin anti-human CD45, Alexa Fluor® 488 anti-human CD45, TotalSeq™-A0048 anti-human CD45, Brilliant Violet 750™ anti-human CD45, TotalSeq™-C0048 anti-human CD45, TotalSeq™-B0048 anti-human CD45, Spark Blue™ 550 anti-human CD45, Spark NIR™ 685 anti-human CD45, TotalSeq™-D0048 anti-human CD45, PE/Cyanine5 anti-human CD45, Spark Blue™ 574 anti-human CD45 Antibody

Product Data



Human peripheral blood lymphocytes were stained with anti-human CD45 (clone 2D1) Spark Blue™ 574 (filled histogram). Open histogram represents unstained cells.

For research use only. Not for diagnostic use. Not for resale. BioLegend will not be held responsible for patent infringement or other violations that may occur with the use of our products.

*These products may be covered by one or more Limited Use Label Licenses (see the BioLegend Catalog or our website, www.biolegend.com/ordering#license). BioLegend products may not be transferred to third parties, resold, modified for resale, or used to manufacture commercial products, reverse engineer functionally similar materials, or to provide a service to third parties without written approval of BioLegend. By use of these products you accept the terms and conditions of all applicable Limited Use Label Licenses. Unless otherwise indicated, these products are for research use only and are not intended for human or animal diagnostic, therapeutic or commercial use.

BioLegend Inc., 8999 BioLegend Way, San Diego, CA 92121 www.biolegend.com
Toll-Free Phone: 1-877-Bio-Legend (246-5343) Phone: (858) 768-5800 Fax: (877) 455-9587

