

PE anti-Lck Phospho (Tyr394) Antibody

Catalog# / Size	933103 / 25 tests 933104 / 100 tests
Clone	A18002D
Regulatory Status	RUO
Other Names	Lsk, p56lck, LCK Proto-Oncogene, Src Family Tyrosine Kinase, Tyrosine-protein kinase LCK, Leukocyte C-terminal Src kinase, LSK, Lymphocyte cell-specific protein-tyrosine kinase, T cell-specific protein-tyrosine kinase
Isotype	Mouse IgG1, κ
Description	The Src family tyrosine kinase p56 ^{Lck} (Lck) is a non-receptor tyrosine kinase that plays a critical role in T cell selection and maturation within the thymus, and also in the function of mature T cells. Lck, which is constitutively bound to cytosolic domains of CD4 and CD8 surface receptors, plays an essential role in T cell receptor (TCR) signaling. Engagement of the TCR with peptide antigen-loaded MHC complexes results in the recruitment of CD4- and CD8-bound Lck to the TCR/CD3 signaling complex. Lck then transphosphorylates TCR-gamma chains and CD3 subunits, thereby activating the TCR/CD3 signaling pathway and leading to the recruitment and subsequent phosphorylation of Zap70 by Lck. Lck also plays an important role in interleukin-2 signaling that regulates the T cell proliferative response. Phosphorylation of Lck by CSK at tyrosine 505 negatively regulates the kinase, and is proposed to generate a closed, inactive conformation of the protein. Conversely, phosphorylation at tyrosine 394 in the activation loop of Lck greatly stimulates enzymatic activity. In many types of cancer, Lck is a proliferative and anti-apoptotic driver, and has been proposed as a target for therapeutic intervention.

Product Details

Verified Reactivity	Human, Mouse
Antibody Type	Monoclonal
Host Species	Mouse
Immunogen	Synthetic peptide corresponding to human Src phosphorylated at tyrosine 419
Formulation	Phosphate-buffered solution, pH 7.2, containing 0.09% sodium azide and BSA (origin USA)
Preparation	The antibody was purified by affinity chromatography and conjugated with PE under optimal conditions.
Concentration	Lot-specific (to obtain lot-specific concentration, please enter the lot number in our Concentration and Expiration Lookup or Certificate of Analysis online tools.)
Storage & Handling	The antibody solution should be stored undiluted between 2°C and 8°C, and protected from prolonged exposure to light. Do not freeze.
Application	ICFC - Quality tested
Recommended Usage	Each lot of this antibody is quality control tested by intracellular immunofluorescent staining with flow cytometric analysis . For flow cytometric staining, the suggested use of this reagent is 5 μ L per million cells in 100 μ L staining volume or 5 μ L per 100 μ L of whole blood.
Excitation Laser	Blue Laser (488 nm) Green Laser (532 nm)/Yellow-Green Laser (561 nm)
Application Notes	This clone has not been tested for IP. This clone may recognize other Src family members. This clone was ICC tested on PFA-fixed cells using both methanol and Triton X-100 permeabilization methods. Both permeabilization methods were compatible with staining. Triton X-100 permeabilization produces stronger staining.

During ICC product development testing, this clone produced strong nuclear staining in a small subpopulation (<1%) of both unstimulated and stimulated cells. The source of this staining is not clear but we do not believe it is Lck-dependent.

This clone was developed using a synthetic peptide corresponding to human Src phosphorylated at tyrosine 419, which displays high sequence homology with the region surrounding Lck tyrosine 394. To confirm specificity to Lck Phospho (Tyr394), the cell line J.Cam1.6 was used. This cell line is a clonal derivative of Jurkat cells that harbors a truncated *LCK* allele with defective protein expression (Straus, *et al.* 1992. *Cell.* 70:585).

Product Citations

1. Reed JC, *et al.* 2020. PLoS One. 15:e0236921. [PubMed](#)

RRID

AB_2820203 (BioLegend Cat. No. 933103)
AB_2820204 (BioLegend Cat. No. 933104)

Antigen Details

Structure	Lck is a 509 amino acid protein with a predicted molecular weight of 58 kD
Distribution	Plasma-membrane associated/T cells
Function	Protein Tyrosine Kinase
Cell Type	T cells
Biology Area	Cell Biology, Signal Transduction
Molecular Family	Protein Kinases/Phosphatase

Antigen References

1. Phillipsen L, *et al.* 2017. *Sci Signal.* 10:eaaf4736.
2. Moogk D, *et al.* 2016. *J Immunol.* 197:644.
3. Klammt C, *et al.* 2015. *Nat Immunol.* 16:961.
4. Cancer Genome Atlas Network. 2015. *Cell.* 161:1681.
5. Casas J, *et al.* 2014. *Nat Commun.* 5:5624
6. McNeill L, *et al.* 2007. *Immunity.* 27:425.
7. Lefebvre DC, *et al.* 2003. *Biochim Biophys Acta.* 1650:40.
8. Kabouridis PS. *et al.* 2003. *Biochem J.* 371:907.
9. Abraham N, *et al.* 1990. *Mol. Cell. Biol.* 10:5197.

Gene ID

[3932](#)

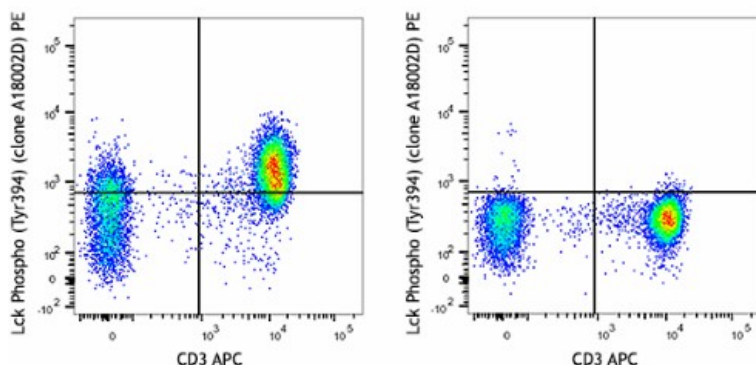
Related Protocols

[Intracellular Flow Cytometry Staining Protocol](#)

Other Formats

Purified anti-Lck Phospho (Tyr394), PE anti-Lck Phospho (Tyr394)

Product Data



Human peripheral blood lymphocytes were treated with (left), or without (right) hydrogen peroxide for 5 minutes, fixed with Fixation Buffer (Cat. No. 420801), permeabilized with Intracellular Staining Permeabilization Wash Buffer (Cat. No. 421002), then surfaced stained with CD3 APC and intracellularly stained with anti-Lck Phospho (Tyr394) (clone A18002D) PE.

For research use only. Not for diagnostic use. Not for resale. BioLegend will not be held responsible for patent infringement or other violations that may occur with the use of our products.

*These products may be covered by one or more Limited Use Label Licenses (see the BioLegend Catalog or our website, www.biolegend.com/ordering#license). BioLegend products may not be transferred to third parties, resold, modified for resale, or used to manufacture commercial products, reverse engineer functionally similar materials, or to provide a service to third parties without written approval of BioLegend. By use of these products you accept the terms and conditions of all applicable Limited Use Label Licenses. Unless otherwise indicated, these products are for research use only and are not intended for human or animal diagnostic, therapeutic or commercial use.

BioLegend Inc., 8999 BioLegend Way, San Diego, CA 92121 www.biolegend.com
Toll-Free Phone: 1-877-Bio-Legend (246-5343) Phone: (858) 768-5800 Fax: (877) 455-9587