

HRP anti-Tau Phospho (Ser262) Antibody

Catalog# / Size	849503 / 25 µg 849504 / 100 µg
Clone	A15091A
Regulatory Status	RUO
Other Names	Microtubule associated protein tau
Isotype	Mouse IgG2b, κ
Description	<p>Tau protein promotes microtubule assembly and stability. Tau is abundant in neurons of the central nervous system, and is expressed at low levels in astrocytes and oligodendrocytes. Abnormal hyperphosphorylation, aggregation, and toxic gain of function of tau is associated with several neurological disorders, including Alzheimer's disease (AD). The major building block of neurofibrillary lesions in AD brains consists of paired helical filaments (PHFs) of abnormally hyperphosphorylated tau. Six isoforms of tau are generated by alternative splicing of the MAPT gene. These isoforms are distinguished by the number of tubulin binding domains, 3 (3R) or 4 (4R), in the C-terminal of the protein and by one (1N), two (2N), or no (0N) inserts in the N-terminal domain. Tau isoforms are differentially expressed during development.</p>

Product Details

Verified Reactivity	Human
Antibody Type	Monoclonal
Host Species	Mouse
Immunogen	Tau Phospho (Ser262) peptide conjugated to KLH.
Purity	The antibody was purified by affinity chromatography and conjugated with HRP under optimal conditions.
Formulation	This antibody is provided in 50% glycerol in aqueous buffered solutions with preservatives.
Concentration	0.5 mg/ml
Storage & Handling	Upon receipt, the antibody solution should be stored undiluted at -20°C, and protected from prolonged exposure to light.
Application	IHC-P - Quality tested
Recommended Usage	Each lot of this antibody is quality control tested by formalin-fixed paraffin-embedded immunohistochemical staining. For immunohistochemistry, a concentration range of 5.0 - 10 µg/ml is suggested. It is recommended that the reagent be titrated for optimal performance for each application.
RRID	AB_2728571 (BioLegend Cat. No. 849503) AB_2728572 (BioLegend Cat. No. 849504)

Antigen Details

Structure	Unmodified Tau isoforms have an apparent molecular weight ranging from 33-79 kD. Additional high and low molecular weight Tau species have been observed in brain tissues.
Distribution	Tissue distribution: Central nervous system, peripheral ganglia and nerves, kidney, skeletal, and heart muscle. Cellular distribution: Cytoskeleton, nucleus, plasma membrane, and cytosol.
Function	Tau promotes microtubule assembly and stability. The short tau isoforms allow plasticity of the cytoskeleton whereas the longer isoforms may preferentially play a role in its stabilization.

Interaction	Tau interacts with Sequestosome-1, Peptidyl-prolyl cis-trans isomerase FKBP4, Casein kinase I isoform delta, Serine/threonine-protein kinase Sgk1, Laforin, Alpha-synuclein
Biology Area	Cell Biology, Neurodegeneration, Neuroscience, Protein Misfolding and Aggregation
Molecular Family	Phospho-Proteins
Antigen References	<ol style="list-style-type: none"> 1. Augustinack JC, <i>et al.</i> 2002. <i>Acta Neuropath.</i> 103(1):26-35. PubMed. 2. Seubert P, <i>et al.</i> 1995. <i>J Biol Chem</i> 270(32):18917-22. PubMed. 3. Dong Y, <i>et al.</i> 2012. <i>PLoS One</i> 7(6):e39386. PubMed.
Gene ID	4137

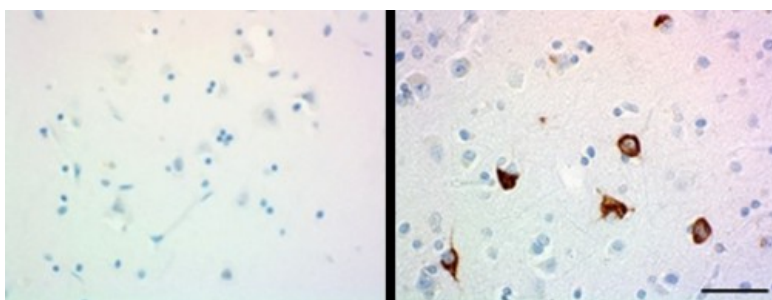
Related Protocols

[Immunohistochemistry Protocol for Paraffin-Embedded Sections](#)

Other Formats

Purified anti-Tau Phospho (Ser262), HRP anti-Tau Phospho (Ser262)

Product Data



IHC staining of HRP conjugated anti-Tau Phospho (Ser262) antibody (clone A15091A) on formalin-fixed paraffin-embedded normal (left panel) and Alzheimer's disease (right panel) human brain tissues. Following antigen retrieval using Sodium Citrate H.I.E.R. (Cat. No. 928602), the tissues were incubated with 5 µg/mL of the primary antibody overnight at 4°C. DAB was used for detection followed by hematoxylin and bluing solution counterstaining, according to the protocol provided. The images were captured with a 40X objective. Scale bar: 50 µm.

For research use only. Not for diagnostic use. Not for resale. BioLegend will not be held responsible for patent infringement or other violations that may occur with the use of our products.

*These products may be covered by one or more Limited Use Label Licenses (see the BioLegend Catalog or our website, www.biolegend.com/ordering#license). BioLegend products may not be transferred to third parties, resold, modified for resale, or used to manufacture commercial products, reverse engineer functionally similar materials, or to provide a service to third parties without written approval of BioLegend. By use of these products you accept the terms and conditions of all applicable Limited Use Label Licenses. Unless otherwise indicated, these products are for research use only and are not intended for human or animal diagnostic, therapeutic or commercial use.

BioLegend Inc., 8999 BioLegend Way, San Diego, CA 92121 www.biolegend.com
Toll-Free Phone: 1-877-Bio-Legend (246-5343) Phone: (858) 768-5800 Fax: (877) 455-9587