

## HRP anti-Neurofilament H & M (NF-H/NF-M), Phosphorylated Antibody

<b>Catalog# / Size</b>	837707 / 25 µg 837708 / 100 µg
<b>Clone</b>	SMI 310
<b>Regulatory Status</b>	RUO
<b>Other Names</b>	Neurofilament heavy polypeptide, NF-H, 200 kD neurofilament protein, neurofilament triplet H protein
<b>Isotype</b>	Mouse IgG1, κ
<b>Description</b>	Neurofilaments (NF) are approximately 10 nanometer intermediate filaments found in neurons. They are a major component of the neuronal cytoskeleton, and function primarily to provide structural support for the axon and regulate axon diameter. There are three major NF subunits, and the names given to these subunits are based upon the apparent molecular mass of the mammalian subunits on SDS-PAGE: the light or lowest NF (NF-L) runs at 68-70 kD; the medium or middle NF (NF-M) runs at about 145-160 kD; the heavy or highest NF (NF-H) runs at 200-220 kD. However, the actual molecular weight of these proteins is considerably lower due to the highly charged C-terminal regions of the molecules. The level of NF gene expression correlates with axonal diameter, which controls how fast electrical signals travel down the axon. Mutant mice with NF abnormalities have phenotypes resembling amyotrophic lateral sclerosis. NF immunostaining is common in diagnostic neuropathology. It is useful for differentiating neurons (positive for NF) from glia (negative for NF).

### Product Details

---

<b>Verified Reactivity</b>	Human, Mouse, Rat
<b>Antibody Type</b>	Monoclonal
<b>Host Species</b>	Mouse
<b>Formulation</b>	This antibody is provided in 50% glycerol in aqueous buffered solution with preservatives.
<b>Preparation</b>	The antibody was purified by affinity chromatography and conjugated to HRP under optimal conditions.
<b>Concentration</b>	0.5 mg/ml
<b>Storage &amp; Handling</b>	Upon receipt, the antibody solution should be stored undiluted at -20°C, and protected from prolonged exposure to light.
<b>Application</b>	<a href="#">IHC-P - Quality tested</a>
<b>Recommended Usage</b>	Each lot of this antibody is quality control tested by formalin-fixed paraffin-embedded immunohistochemical staining. For immunohistochemistry, a concentration range of 1.0 - 5.0 µg/ml is suggested. It is recommended that the reagent be titrated for optimal performance for each application.
<b>Application Notes</b>	<p>Additional reported applications (for the relevant formats) include: Western blotting<sup>4</sup>, immunocytochemistry<sup>2</sup> and immunohistochemical staining of frozen tissue sections<sup>1,3</sup>.</p> <p>Clone SMI 310 reacts with an extensively phosphorylated epitope of neurofilament H and, to a much lesser extent, neurofilament M in most mammalian species. Phosphatase treatment of samples abolishes reaction with SMI 310. A very extensive degree of hyperphosphorylation of neurofilaments seems to be necessary for its reactivity.</p>
<b>Application References</b>	<ol style="list-style-type: none"><li>1. Dubourg O, <i>et al.</i> 2011. <i>Acta Myol.</i> 30(2):103. (IHC-F) <a href="#">PubMed</a></li><li>2. Mizui T, <i>et al.</i> 2009. <i>J Neurochem.</i> 109(2):611. (ICC)</li><li>3. Denlger-Crish C, <i>et al.</i> 2014. <i>Front Neurosci.</i> 8:290. (IHC-F) <a href="#">PubMed</a></li><li>4. Mulot SF, <i>et al.</i> 1994. <i>FEBS Lett.</i> 349(3):359. (WB)</li></ol>
<b>RRID</b>	AB_2686950 (BioLegend Cat. No. 837707) AB_2686951 (BioLegend Cat. No. 837708)

## Antigen Details

---

<b>Structure</b>	The medium or middle neurofilament (NF-M) runs at 145-160 kD, and the heavy or highest neurofilament (NF-H) runs at 200-220 kD.
<b>Distribution</b>	Tissue distribution: CNS, peripheral nerves and glandular cells of the prostate. Cellular distribution: Cytoskeleton, nucleus, cytosol, and mitochondrion.
<b>Function</b>	Neurofilaments are the major components of the neuronal cytoskeleton. They provide axonal support and regulate axon diameter.
<b>Interaction</b>	Cell bodies and dendrites are generally unstained while other cells and tissues are unreactive, except for peripheral axons.
<b>Cell Type</b>	Mature Neurons
<b>Biology Area</b>	Cell Biology, Neuroscience, Neuroscience Cell Markers
<b>Molecular Family</b>	Intermediate Filaments, Phospho-Proteins
<b>Antigen References</b>	1. Siedler D, <i>et al.</i> 2014. <i>Front Cell Neurosci.</i> 8:429.
<b>Gene ID</b>	<a href="#">4744</a>

## Related Protocols

---

[Immunocytochemistry Staining Protocol](#)

[Western Blotting Protocol](#)

[Immunohistochemistry Protocol for Paraffin-Embedded Sections](#)

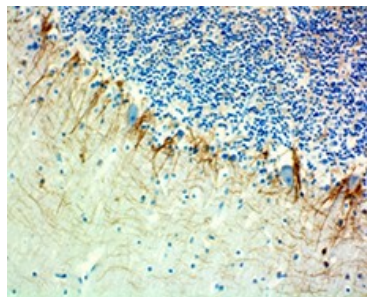
## Other Formats

---

Purified anti-Neurofilament H & M (NF-H/NF-M), Phosphorylated, Biotin anti-Neurofilament H & M (NF-H/NF-M), Phosphorylated, HRP anti-Neurofilament H & M (NF-H/NF-M), Phosphorylated, Alexa Fluor® 647 anti-Neurofilament H & M (NF-H/NF-M), Phosphorylated, Alexa Fluor® 488 anti-Neurofilament H & M (NF-H/NF-M), Phosphorylated

## Product Data

---



IHC staining of HRP anti-Neurofilament H & M (NF-H/NF-M), Phosphorylated Antibody (Clone SMI 310) on formalin-fixed paraffin-embedded human cerebellum brain tissue. After antigen retrieval using Retrieve-All Antigen Unmasking System 3, the tissue was incubated with the primary antibody at 1 µg/mL for overnight at 4°C. DAB was used for detection followed by hematoxylin and Bluing solution counterstaining.

For research use only. Not for diagnostic use. Not for resale. BioLegend will not be held responsible for patent infringement or other violations that may occur with the use of our products.

\*These products may be covered by one or more Limited Use Label Licenses (see the BioLegend Catalog or our website, [www.biolegend.com/ordering#license](http://www.biolegend.com/ordering#license)). BioLegend products may not be transferred to third parties, resold, modified for resale, or used to manufacture commercial products, reverse engineer functionally similar materials, or to provide a service to third parties without written approval of BioLegend. By use of these products you accept the terms and conditions of all applicable Limited Use Label Licenses. Unless otherwise indicated, these products are for research use only and are not intended for human or animal diagnostic,

therapeutic or commercial use.

BioLegend Inc., 8999 BioLegend Way, San Diego, CA 92121 [www.biolegend.com](http://www.biolegend.com)  
Toll-Free Phone: 1-877-Bio-Legend (246-5343) Phone: (858) 768-5800 Fax: (877) 455-9587