

## Biotin anti-human MCP-1 (CCL2) Antibody

<b>Catalog# / Size</b>	536004 / 50 µg
<b>Clone</b>	Poly5360
<b>Regulatory Status</b>	RUO
<b>Other Names</b>	Monocyte chemoattractant protein-1 (MCP1), Monocyte chemoattractant and activating factor (MCAF), JE, Small inducible cytokine A2 (SCYA2), HC-11 (HC11), P6, Smooth muscle cell chemotactic factor (SMC-CF, SMCCF), CCL2, MCP-1, MCP1,CCL-2, MCP-1/CCL2
<b>Isotype</b>	Goat Ig
<b>Description</b>	MCP-1, also known as CCL2, is a member of the CC chemokine family. It is widely expressed in endothelial cells, smooth muscle cells and monocytes in response to several atherogenic stimulants such as CD40 ligand, platelet derived growth factor (PDGF), interleukin-1β (IL-1β) and oxidized low density lipoprotein. In addition, MCP-1 has been implicated in monocytic infiltration of tissues during several inflammatory diseases, and has been implicated in macrophage-mediated tumor growth suppression in mice. MCP-1 has been shown to have direct effects on tumor cells in an autocrine and paracrine fashion in multiple cancers, including breast, lung, cervical, ovarian, and prostatic. In addition, MCP-1 plays a key role in the regulation of MMPs during transmigration.

### Product Details

---

<b>Verified Reactivity</b>	Human
<b>Antibody Type</b>	Polyclonal
<b>Host Species</b>	Goat
<b>Immunogen</b>	Recombinant protein
<b>Formulation</b>	Phosphate-buffered solution, pH 7.2, containing 0.09% sodium azide.
<b>Preparation</b>	The antibody was purified by affinity chromatography and conjugated with biotin under optimal conditions.
<b>Concentration</b>	0.5 mg/ml
<b>Storage &amp; Handling</b>	The antibody solution should be stored undiluted between 2°C and 8°C. <b>Do not freeze.</b>
<b>Application</b>	<a href="#">ELISA Detection - Quality tested</a>
<b>Recommended Usage</b>	Each lot of this antibody is quality control tested by <a href="#">ELISA assay</a> . For ELISA Detection applications, a concentration range of 0.01 - 0.5 µg/mL is recommended. To obtain a linear standard curve, serial dilutions of MCP-1 recombinant protein ranging from 1000 to 15.6 pg/mL is recommended for each ELISA plate. It is recommended that the reagent be titrated for optimal performance for each application.
<b>Application Notes</b>	The biotinylated Poly5360 antibody is useful as the detection antibody in a sandwich ELISA assay, when used in conjunction with the purified Poly5360 antibody (Cat. No. 536002) as the capture antibody and Recombinant Human MCP-1 (CCL2) (ELISA Std.) (Cat. No. 565001).
<b>RRID</b>	AB_2734497 (BioLegend Cat. No. 536004)

### Antigen Details

---

<b>Structure</b>	CC chemokine, dimer, 13.8 kD (Mammalian)
<b>Distribution</b>	Monocytes, vascular endothelial cells, smooth muscle, glomerular mesangial cells
<b>Function</b>	Upregulated by IL-1, TNF-α, PDGF, TGF-β

<b>Interaction</b>	Monocytes, basophils, T cells, NK cells, immature dendritic cells
<b>Ligand/Receptor</b>	CCR2, CCR5, CCR10, D6, possibly L-CCR
<b>Cell Type</b>	Endothelial cells, Monocytes
<b>Biology Area</b>	Cell Biology, Neuroinflammation, Neuroscience
<b>Molecular Family</b>	Cytokines/Chemokines
<b>Antigen References</b>	<ol style="list-style-type: none"> <li>1. Fitzgerald KA, <i>et al.</i> 2001. <i>The Cytokine FactsBook</i>; Academic Press, San Diego.</li> <li>2. Bischoff SC, <i>et al.</i> 1992. <i>J. Exp. Med.</i> 175:1271.</li> <li>3. Charo IF, <i>et al.</i> 1994. <i>Proc. Natl. Acad. Sci. USA.</i> 91:2752.</li> <li>4. Jiang Y, <i>et al.</i> 1992. <i>J. Immunol.</i> 148:2423.</li> </ol>
<b>Gene ID</b>	<a href="#">6347</a>

## Related Protocols

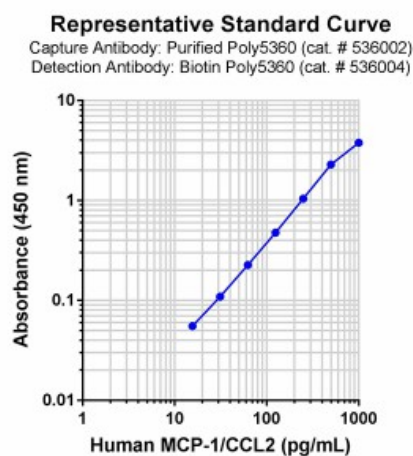
[Active Protocols: Sandwich ELISA - Video](#)

[Sandwich ELISA Protocol](#)

## Other Formats

Purified anti-human MCP-1 (CCL2), Biotin anti-human MCP-1 (CCL2)

## Product Data



For research use only. Not for diagnostic use. Not for resale. BioLegend will not be held responsible for patent infringement or other violations that may occur with the use of our products.

\*These products may be covered by one or more Limited Use Label Licenses (see the BioLegend Catalog or our website, [www.biolegend.com/ordering#license](http://www.biolegend.com/ordering#license)). BioLegend products may not be transferred to third parties, resold, modified for resale, or used to manufacture commercial products, reverse engineer functionally similar materials, or to provide a service to third parties without written approval of BioLegend. By use of these products you accept the terms and conditions of all applicable Limited Use Label Licenses. Unless otherwise indicated, these products are for research use only and are not intended for human or animal diagnostic, therapeutic or commercial use.

BioLegend Inc., 8999 BioLegend Way, San Diego, CA 92121 [www.biolegend.com](http://www.biolegend.com)  
 Toll-Free Phone: 1-877-Bio-Legend (246-5343) Phone: (858) 768-5800 Fax: (877) 455-9587