

FITC anti-BrdU Antibody

Catalog# / Size	364103 / 25 tests 364104 / 100 tests
Clone	3D4
Regulatory Status	RUO
Other Names	5-bromodeoxyuridine, bromodeoxyuridine
Isotype	Mouse IgG1, κ
Description	BrdU is a uridine derivative and a structural analog of thymidine, which can be incorporated into DNA during the S-phase of a cell cycle as a substitute for thymidine. Cells can be pulse-labeled with BrdU and analyzed with antibodies against BrdU to determine the proportion of cells in the S-phase of the cell cycle during a given interval.

Product Details

Antibody Type	Monoclonal
Host Species	Mouse
Immunogen	Iodouridine-conjugated ovalbumin
Formulation	Phosphate-buffered solution, pH 7.2, containing 0.09% sodium azide and BSA (origin USA)
Preparation	The antibody was purified by affinity chromatography and conjugated with FITC under optimal conditions.
Concentration	Lot-specific (to obtain lot-specific concentration, please enter the lot number in our Concentration and Expiration Lookup or Certificate of Analysis online tools.)
Storage & Handling	The antibody solution should be stored undiluted between 2°C and 8°C, and protected from prolonged exposure to light. Do not freeze.
Application	ICFC - Quality tested
Recommended Usage	Each lot of this antibody is quality control tested by intracellular immunofluorescent staining with flow cytometric analysis . For flow cytometric staining, the suggested use of this reagent is 5 µl per million cells in 100 µl staining volume or 5 µl per 100 µl of whole blood.
Excitation Laser	Blue Laser (488 nm)
Application Notes	Additional reported applications (for the relevant formats) include: immunohistochemistry and fluorescence microscopy.
Application References	<ol style="list-style-type: none"> 1. Dolbeare F, <i>et al.</i> 1983. <i>Proc. Natl. Acad. Sci. USA</i> 80:5573. 2. Hirota K, <i>et al.</i> 2007. <i>J. Exp. Med.</i> 204:41. 3. Godebu E, <i>et al.</i> 2008. <i>J. Immunol.</i> 181:1798. 4. Waskow C, <i>et al.</i> 2008. <i>Nat. Immunol.</i> 9:676.

Product Citations

1. Skalniak L, *et al.* 2018. *Cancers (Basel)*. 10:. [PubMed](#)
2. Pettinati I, *et al.* 2018. *Elife*. 7:. [PubMed](#)
3. Bainor AJ *et al.* 2018. *Cell reports*. 25(10):2797-2807 . [PubMed](#)
4. Cai Y, *et al.* 2019. *Cell Rep*. 27:3034. [PubMed](#)
5. Barman PK, *et al.* 2019. *J Immunol*. 202:2720. [PubMed](#)
6. Wells AC *et al.* 2017. *eLife*. 6 pii: e26398. [PubMed](#)
7. ter Huurne M, *et al.* 2017. *Cell Stem Cell*. 1.186805556. [PubMed](#)
8. Katarzyna Magiera *et al.* 2017. *Cell chemical biology*. 24(4):458-470 . [PubMed](#)
9. Chen Z, *et al.* 2020. *Cell Death Dis*. 11:180. [PubMed](#)
10. Skalniak L, *et al.* 2019. *FEBS J*. 286:1360. [PubMed](#)
11. Chen T, *et al.* 2016. *J Exp Med*. 13(13):3025-3039. [PubMed](#)
12. Endres T, *et al.* 2021. *Molecular Cell*. 81(4):830-844.e13. [PubMed](#)

RRID AB_2564480 (BioLegend Cat. No. 364103)
AB_2564481 (BioLegend Cat. No. 364104)

Antigen Details

Structure	Uridine derivative that can be incorporated into DNA and substitute thymidine residues.
Distribution	Cells can be pulse-labeled with BrdU, which will be incorporated into DNA during the cell cycle's synthesis phase.
Function	The antibody against BrdU can be used to identify cells undergoing DNA replication during the BrdU incorporation period.
Biology Area	Cell Biology, Cell Cycle/DNA Replication, Immunology
Molecular Family	Nuclear Markers
Antigen References	<ol style="list-style-type: none">1. Barker JM, <i>et al.</i> 2013. <i>PLoS One</i> 8:e63692.2. Duque A and Rakic P. 2011. <i>J. Neurosci.</i> 31:15205.3. Robbins S, <i>et al.</i> 2011. <i>J. Vis. Exp.</i> 55:2855.4. Broekhuizen CA, <i>et al.</i> 2010. <i>Infect Immun.</i> 78:954.5. van der Wath RC, <i>et al.</i> 2009. <i>PLoS One</i> 4:e6972.6. Dolbeare F, <i>et al.</i> 1985. <i>Cytometry</i> 6:521.7. Gratzner HG. 1982. <i>Science</i> 218:474.
Gene ID	NA

Related Protocols

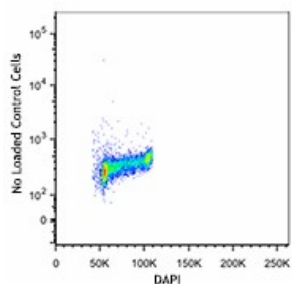
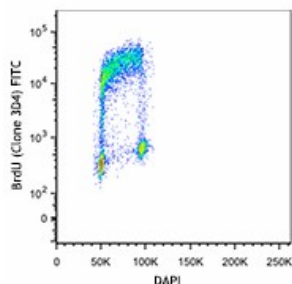
[Anti-BrdU Staining Using 70% Ethanol and 2N HCL](#)

[Anti-BrdU Staining Using DNase with Surface and Fluorescent Proteins](#)

Other Formats

Purified anti-BrdU, Alexa Fluor® 488 anti-BrdU, FITC anti-BrdU, Alexa Fluor® 647 anti-BrdU, PerCP/Cyanine5.5 anti-BrdU, Phase-Flow™ FITC BrdU Kit, Phase-Flow™ Alexa Fluor® 647 BrdU Kit, PE anti-BrdU, Alexa Fluor® 700 anti-BrdU, APC anti-BrdU, PE/Cyanine7 anti-BrdU

Product Data



HEL cell line was pulsed with BrdU for one hour (upper panel) or without (lower panel) and then stained with anti-BrdU (clone 3D4) FITC according to the BioLegend's BrdU staining procedure. Cells were subsequently stained with one μ g of DAPI for DNA analysis.

For research use only. Not for diagnostic use. Not for resale. BioLegend will not be held responsible for patent infringement or other violations that may occur with the use of our products.

*These products may be covered by one or more Limited Use Label Licenses (see the BioLegend Catalog or our website, www.biolegend.com/ordering#license). BioLegend products may not be transferred to third parties, resold, modified for resale, or used to manufacture commercial products, reverse engineer functionally similar materials, or to provide a service to third parties without written approval of BioLegend. By use of these products you accept the terms and conditions of all applicable Limited Use Label Licenses. Unless otherwise indicated, these products are for research use only and are not intended for human or animal diagnostic, therapeutic or commercial use.

BioLegend Inc., 8999 BioLegend Way, San Diego, CA 92121 www.biolegend.com
Toll-Free Phone: 1-877-Bio-Legend (246-5343) Phone: (858) 768-5800 Fax: (877) 455-9587