

Alexa Fluor® 488 anti-Neurofilament H & M (NF-H/NF-M), Phosphorylated Antibody

Catalog# / Size	837711 / 25 µg 837712 / 100 µg
Clone	SMI 310
Regulatory Status	RUO
Other Names	Neurofilament heavy polypeptide, NF-H, 200 kD neurofilament protein, neurofilament triplet H protein
Isotype	Mouse IgG1, κ
Description	Neurofilaments (NF) are approximately 10 nanometer intermediate filaments found in neurons. They are a major component of the neuronal cytoskeleton, and function primarily to provide structural support for the axon and regulate axon diameter. There are three major NF subunits, and the names given to these subunits are based upon the apparent molecular mass of the mammalian subunits on SDS-PAGE: the light or lowest (NF-L) runs at 68-70 kD; the medium or middle (NF-M) runs at about 145-160 kD; the heavy or highest (NF-H) runs at 200-220 kD. However, the actual molecular weight of these proteins is considerably lower due to the highly charged C-terminal regions of the molecules. The level of NF gene expression correlates with axonal diameter, which controls how fast electrical signals travel down the axon. Mutant mice with NF abnormalities have phenotypes resembling amyotrophic lateral sclerosis. NF immunostaining is common in diagnostic neuropathology. It is useful for differentiating neurons (positive for NF) from glia (negative for NF).

Product Details

Verified Reactivity	Human, Mouse, Rat
Antibody Type	Monoclonal
Host Species	Mouse
Formulation	Phosphate-buffered solution, pH 7.2, containing 0.09% sodium azide.
Preparation	The antibody was purified by affinity chromatography and conjugated with Alexa Fluor® 488 under optimal conditions.
Concentration	0.5 mg/ml
Storage & Handling	The antibody solution should be stored undiluted between 2°C and 8°C, and protected from prolonged exposure to light. Do not freeze.
Application	IHC-P - Quality tested
Recommended Usage	Each lot of this antibody is quality control tested by formalin-fixed paraffin-embedded immunohistochemical staining. For immunohistochemistry, a concentration range of 5.0 - 10 µg/ml is suggested. It is recommended that the reagent be titrated for optimal performance for each application. * Alexa Fluor® 488 has a maximum emission of 519 nm when it is excited at 488 nm. Alexa Fluor® and Pacific Blue™ are trademarks of Life Technologies Corporation. View full statement regarding label licenses
Excitation Laser	Blue Laser (488 nm)
Application Notes	Additional reported applications (for the relevant formats) include: Western blotting ⁴ , immunocytochemistry ² , immunohistochemical staining of frozen tissue sections ^{1,3} , and spatial biology (IBEX) ^{5,6} . Clone SMI 310 reacts with an extensively phosphorylated epitope of neurofilament H and, to a much lesser extent, neurofilament M in most mammalian species. Phosphatase treatment of

samples abolishes reaction with SMI 310. A very extensive degree of hyperphosphorylation of neurofilaments seems to be necessary for its reactivity.

Application References

(PubMed link indicates BioLegend citation)

1. Dubourg O, *et al.* 2011. *Acta Myol.* 30(2):103. (IHC-F) [PubMed](#)
2. Mizui T, *et al.* 2009. *J Neurochem.* 109(2):611. (ICC)
3. Denlger-Crish C, *et al.* 2014. *Front Neurosci.* 8:290. (IHC-F) [PubMed](#)
4. Mulot SF, *et al.* 1994. *FEBS Lett.* 349(3):359. (WB)
5. Radtke AJ, *et al.* 2020. *Proc Natl Acad Sci U S A.* 117:33455-65. (SB) [PubMed](#)
6. Radtke AJ, *et al.* 2022. *Nat Protoc.* 17:378-401. (SB) [PubMed](#)

RRID

AB_2750293 (BioLegend Cat. No. 837711)
AB_2750294 (BioLegend Cat. No. 837712)

Antigen Details

Structure	The medium or middle neurofilament (NF-M) runs at 145-160 kD, and the heavy or highest neurofilament (NF-H) runs at 200-220 kD.
Distribution	Tissue distribution: CNS, peripheral nerves and glandular cells of the prostate. Cellular distribution: Cytoskeleton, nucleus, cytosol, and mitochondrion.
Function	Neurofilaments are the major components of the neuronal cytoskeleton. They provide axonal support and regulate axon diameter.
Interaction	Cell bodies and dendrites are generally unstained while other cells and tissues are unreactive, except for peripheral axons.
Cell Type	Mature Neurons
Biology Area	Cell Biology, Neuroscience, Neuroscience Cell Markers
Molecular Family	Intermediate Filaments, Phospho-Proteins
Antigen References	1. Siedler D, <i>et al.</i> 2014. <i>Front Cell Neurosci.</i> 8:429.
Gene ID	4744

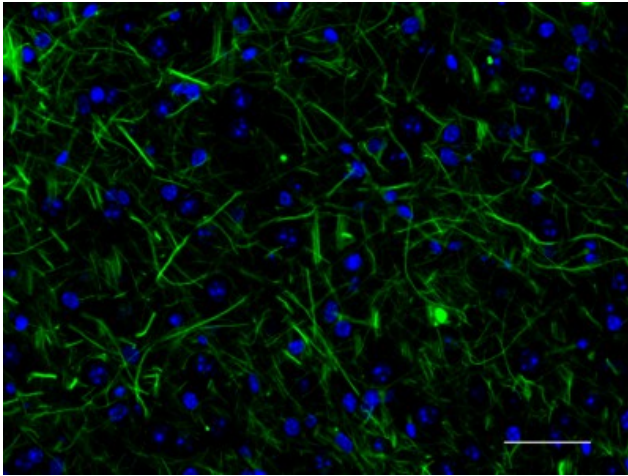
Related Protocols

[Immunohistochemistry Protocol for Paraffin-Embedded Sections](#)

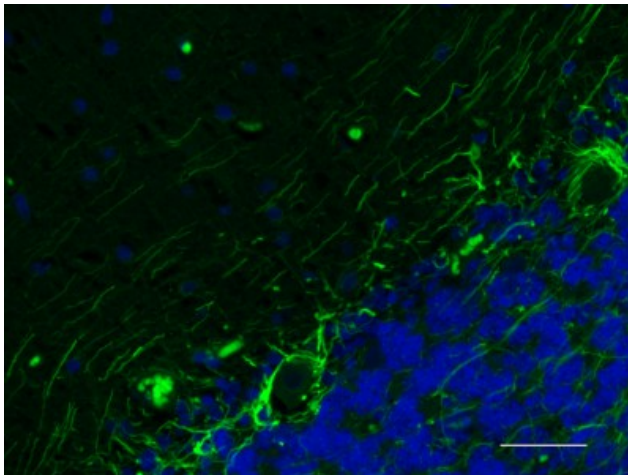
Other Formats

Purified anti-Neurofilament H & M (NF-H/NF-M), Phosphorylated, Biotin anti-Neurofilament H & M (NF-H/NF-M), Phosphorylated, HRP anti-Neurofilament H & M (NF-H/NF-M), Phosphorylated, Alexa Fluor® 647 anti-Neurofilament H & M (NF-H/NF-M), Phosphorylated, Alexa Fluor® 488 anti-Neurofilament H & M (NF-H/NF-M), Phosphorylated

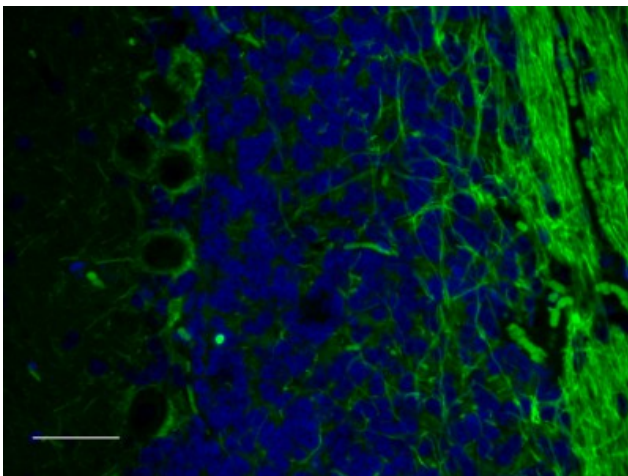
Product Data



IHC staining of Alexa Fluor® 488 anti-Neurofilament H & M (NF-H/NF-M), Phosphorylated antibody (clone SMI 310) on formalin-fixed paraffin-embedded mouse midbrain tissue. Following antigen retrieval using Retrieve-All Antigen Unmasking System 3 (Cat. No. 927601), the tissue was incubated with 10 µg/mL of the primary antibody overnight at 4°C. Nuclei were counterstained with DAPI, and the slides were mounted with ProLong™ Gold Antifade Mountant. The image was captured with a 40X objective. Scale Bar: 50 µm



IHC staining of Alexa Fluor® 488 anti-Neurofilament H & M (NF-H/NF-M), Phosphorylated antibody (clone SMI 310) on formalin-fixed paraffin-embedded human cerebellum tissue. Following antigen retrieval using Retrieve-All Antigen Unmasking System 3 (Cat. No. 927601), the tissue was incubated with 5 µg/mL of the primary antibody overnight at 4°C. Nuclei were counterstained with DAPI, and the slides were mounted with ProLong™ Gold Antifade Mountant. The image was captured with a 40X objective. Scale Bar: 50 µm



IHC staining of Alexa Fluor® 488 anti-Neurofilament H & M (NF-H/NF-M), Phosphorylated antibody (clone SMI 310) on formalin-fixed paraffin-embedded rat cerebellum tissue. Following antigen retrieval using Retrieve-All Antigen Unmasking System 3 (Cat. No. 927601), the tissue was incubated with 5 µg/mL of the primary antibody overnight at 4°C. Nuclei were counterstained with DAPI, and the slides were mounted with ProLong™ Gold Antifade Mountant. The image was captured with a 40X objective. Scale Bar: 50 µm

For research use only. Not for diagnostic use. Not for resale. BioLegend will not be held responsible for patent infringement or other violations that may occur with the use of our products.

*These products may be covered by one or more Limited Use Label Licenses (see the BioLegend Catalog or our website, www.biolegend.com/ordering#license). BioLegend products may not be transferred to third parties, resold, modified for resale, or used to manufacture commercial products, reverse engineer functionally similar materials, or to provide a service to third parties without written approval of BioLegend. By use of these products you accept the terms and conditions of all applicable Limited Use Label Licenses. Unless otherwise indicated, these products are for research use only and are not intended for human or animal diagnostic, therapeutic or commercial use.

BioLegend Inc., 8999 BioLegend Way, San Diego, CA 92121 www.biolegend.com
Toll-Free Phone: 1-877-Bio-Legend (246-5343) Phone: (858) 768-5800 Fax: (877) 455-9587