

Purified Mouse IgG2a, κ Isotype Ctrl Antibody

Catalog# / Size	401501 / 50 µg 401502 / 500 µg
Clone	MG2a-53
Regulatory Status	RUO
Isotype	Mouse IgG2a, κ
Description	The isotype of MG2a-53 immunoglobulin is mouse IgG2a,κ. This antibody was chosen as an isotype control after screening on a variety of resting, activated, live, and fixed mouse, rat and human tissues.

Product Details

Antibody Type	Monoclonal
Host Species	Mouse
Immunogen	Trinitrophenol + KLH
Formulation	Phosphate-buffered solution, pH 7.2, containing 0.09% sodium azide.
Preparation	The immunoglobulin was purified by affinity chromatography.
Concentration	0.5 mg/ml
Storage & Handling	The immunoglobulin solution should be stored undiluted between 2°C and 8°C
Application	FC - Quality tested ChIP - Verified ICFC, WB, IP, ICC, IHC, FA - Reported in the literature, not verified in house
Recommended Usage	Each lot of this antibody is quality control tested by immunofluorescent staining with flow cytometric analysis as negative control, and the purity is greater than 95% by SDS-PAGE. Use at concentrations comparable to those of the specific antibody of interest.
Application Notes	Additional reported applications (for the relevant formats) include: Western blotting, immunoprecipitation, immunocytochemistry, immunohistochemistry, and functional assay. The Ultra-LEAF™ purified antibody (Endotoxin <0.1 EU/µg, Azide-Free, 0.2 µm filtered) is recommended for functional assays (Cat. Nos. 401507-401512).
Application References (PubMed link indicates BioLegend citation)	1. Bhattacharyya S, <i>et al.</i> 2007. <i>Am. J. Physiol. Gastrointest Liver Physiol.</i> doi:10.1152/ajpgi.00149. 2. Lee H, <i>et al.</i> 2014. <i>Invest. Ophthalmol. Vis. Sci.</i> 55:2885. PubMed 3. Baker GF, <i>et al.</i> 2014. <i>Cancer Res.</i> 74:5079. PubMed
Product Citations	1. Ghosh R, <i>et al.</i> 2018. <i>PLoS One.</i> 13:e0194611. PubMed 2. Gu C, <i>et al.</i> 2019. <i>J Immunol.</i> 203:389. PubMed 3. Bradford BM, <i>et al.</i> 2018. <i>Parasite Immunol.</i> 40:e12566. PubMed 4. Liu PY, <i>et al.</i> 2019. <i>Nat Commun.</i> 3.906944444. PubMed 5. Zhou J, <i>et al.</i> 2020. <i>Nat Commun.</i> 0.625. PubMed 6. Parra-Sánchez H, <i>et al.</i> 2018. <i>Mol Immunol.</i> 96:1. PubMed 7. Frasca D, <i>et al.</i> 2020. <i>Front Immunol.</i> 11:392. PubMed 8. Lee H, <i>et al.</i> 2014. <i>Invest Ophthalmol Vis Sci.</i> 55:2885. PubMed 9. Baker G, <i>et al.</i> 2014. <i>Cancer Res.</i> 74:5079. PubMed 10. Wang J, <i>et al.</i> 2020. <i>Cell.</i> 183:1264. PubMed
RRID	AB_2800437 (BioLegend Cat. No. 401502)

Antigen Details

Gene ID

NA

Related Protocols

[BioLegend's Tools for Chromatin Immunoprecipitation \(ChIP\) Assays - Video](#)

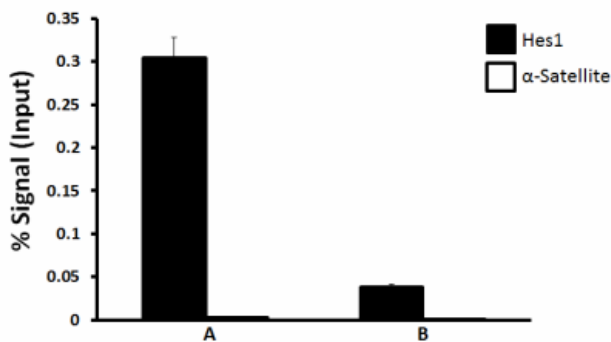
[Chromatin Immunoprecipitation \(ChIP\) Assay Protocol](#)

Other Formats

Purified Mouse IgG2a, κ Isotype Ctrl, Ultra-LEAF™ Purified Mouse IgG2a, κ Isotype Ctrl

Product Data

Go-ChIP-Grade™ Purified Mouse IgG2a, κ Isotype Control Antibody



Chromatin Immunoprecipitations (ChIP) were performed with cross-linked chromatin samples from 4×10^6 of Jurkat cells with either A) 1:100 dilution of Go-ChIP-Grade™ Purified anti-human Ikaros (Clone 16B5C71, Cat. No. 687103) or B) equal amount of Go-ChIP-Grade™ Purified Mouse IgG2a, κ Isotype Control Antibody (Clone MG2a-53, Cat. No. 401505) by using Go-ChIP-Grade™ Protein G Enzymatic Kit (Cat. No. 699904). The enriched DNA was purified and quantified by real-time qPCR using primers targeting human Hes1 gene region and α -Satellite repeats. The amount of immunoprecipitated DNA in each sample is represented as signal relative to total amount of input chromatin.

For research use only. Not for diagnostic use. Not for resale. BioLegend will not be held responsible for patent infringement or other violations that may occur with the use of our products.

*These products may be covered by one or more Limited Use Label Licenses (see the BioLegend Catalog or our website, www.biolegend.com/ordering#license). BioLegend products may not be transferred to third parties, resold, modified for resale, or used to manufacture commercial products, reverse engineer functionally similar materials, or to provide a service to third parties without written approval of BioLegend. By use of these products you accept the terms and conditions of all applicable Limited Use Label Licenses. Unless otherwise indicated, these products are for research use only and are not intended for human or animal diagnostic, therapeutic or commercial use.

BioLegend Inc., 8999 BioLegend Way, San Diego, CA 92121 www.biolegend.com
Toll-Free Phone: 1-877-Bio-Legend (246-5343) Phone: (858) 768-5800 Fax: (877) 455-9587