

PE anti-mouse CD282 (TLR2) Antibody

Catalog# / Size	148603 / 25 µg 148604 / 100 µg
Clone	CB225
Regulatory Status	RUO
Other Names	TLR-2, mTLR2, Ly105
Isotype	Rat IgG2a, κ
Description	CD282, also known as TLR2, is an 89 kD, type I transmembrane protein, with 14 leucine-rich repeats (LRR) in the extracellular region and one toll/IL-1R (TIR) domain in the intracellular region. TLR2 is mainly expressed on monocytes, macrophages, dendritic cells, granulocytes, and endothelial and epithelial cells. TLR2 associates with TLR1 and TLR6, and mediates the innate immune response against several components of Gram-positive bacteria, such as peptidoglycan, lipoteichoic acid (LTA), lipoarabinomannan, and lipoproteins as well as different LPS from certain Gram-negative bacteria, yeast, spirochetes, and fungi.

Product Details

Verified Reactivity	Mouse
Antibody Type	Monoclonal
Host Species	Rat
Immunogen	Mouse TLR2-transfected Ba/F3 cells.
Formulation	Phosphate-buffered solution, pH 7.2, containing 0.09% sodium azide and BSA (origin USA)
Preparation	The antibody was purified by affinity chromatography and conjugated with PE under optimal conditions.
Storage & Handling	The antibody solution should be stored undiluted between 2°C and 8°C, and protected from prolonged exposure to light. Do not freeze.
Application	FC - Quality tested
Recommended Usage	Each lot of this antibody is quality control tested by immunofluorescent staining with flow cytometric analysis . For flow cytometric staining, the suggested use of this reagent is ≤0.5 µg per million cells in 100 µl volume. It is recommended that the reagent be titrated for optimal performance for each application.
Excitation Laser	Blue Laser (488 nm) Green Laser (532 nm)/Yellow-Green Laser (561 nm)
Application Notes	1. Shibata T, <i>et al.</i> 2012. <i>Int. Immunol.</i> 24:613. (FC)
Product Citations	1. Michela Miani <i>et al.</i> 2018. <i>Cell metabolism.</i> 28(4):557-572 . PubMed 2. Lax N, <i>et al.</i> 2020. <i>J Neuroinflammation.</i> 17:55. PubMed 3. Takayanagi Y, <i>et al.</i> 2020. <i>J Clin Med.</i> 9:00. PubMed 4. Jeljeli M, <i>et al.</i> 2020. <i>Cell Rep.</i> 33:108325. PubMed
RRID	AB_2564119 (BioLegend Cat. No. 148603) AB_2564120 (BioLegend Cat. No. 148604)

Antigen Details

Structure	89 kD type I transmembrane protein with 14 leucine-rich repeats (LRR) on its extracellular region and one toll/IL-1R (TIR) domain on its intracellular region.
------------------	--

Distribution	Monocytes, macrophages, dendritic cells, granulocytes, endothelial cells, epithelial cells.
Function	Activates innate host defense against a diverse set of pathogens.
Interaction	TLR1, TLR6.
Ligand/Receptor	Microbial lipoproteins, peptidoglycans, lipoteichoic acid.
Cell Type	Dendritic cells, Endothelial cells, Epithelial cells, Granulocytes, Macrophages, Monocytes
Biology Area	Cell Biology, Immunology, Innate Immunity, Signal Transduction
Molecular Family	CD Molecules, Toll Like Receptors
Antigen References	<ol style="list-style-type: none"> 1. Du B, <i>et al.</i> 2013. <i>J. Biol. Chem.</i> 288:15131. 2. Zivkovic A, <i>et al.</i> 2011. <i>J. Immunol.</i> 186:1608. 3. Okun E, <i>et al.</i> 2010. <i>J. Neurochem.</i> 114:462. 4. Kim S, <i>et al.</i> 2009. <i>Nature.</i> 457:102.
Gene ID	24088

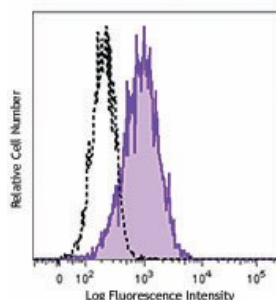
Related Protocols

[Cell Surface Flow Cytometry Staining Protocol](#)

Other Formats

Purified anti-mouse CD282 (TLR2), PE anti-mouse CD282 (TLR2)

Product Data



Thioglycolate-elicited BALB/c mouse peritoneal macrophages were stained with TLR2 (clone CB225) PE (filled histogram) or rat IgG2a, κ PE isotype control (open histogram).

For research use only. Not for diagnostic use. Not for resale. BioLegend will not be held responsible for patent infringement or other violations that may occur with the use of our products.

*These products may be covered by one or more Limited Use Label Licenses (see the BioLegend Catalog or our website, www.biolegend.com/ordering#license). BioLegend products may not be transferred to third parties, resold, modified for resale, or used to manufacture commercial products, reverse engineer functionally similar materials, or to provide a service to third parties without written approval of BioLegend. By use of these products you accept the terms and conditions of all applicable Limited Use Label Licenses. Unless otherwise indicated, these products are for research use only and are not intended for human or animal diagnostic, therapeutic or commercial use.

BioLegend Inc., 8999 BioLegend Way, San Diego, CA 92121 www.biolegend.com
Toll-Free Phone: 1-877-Bio-Legend (246-5343) Phone: (858) 768-5800 Fax: (877) 455-9587