

PE anti-human CD290 (TLR10) Antibody

Catalog# / Size	354603 / 25 tests 354604 / 100 tests
Clone	3C10C5
Regulatory Status	RUO
Other Names	Toll like receptor 10
Isotype	Mouse IgG1, κ
Description	CD290, also known as TLR10, is a 91-100 kD glycosylated protein belonging to the toll-like receptor family. It is expressed on B cell, Treg cells, and plasmacytoid dendritic cells but absent on T cells, particularly non-Treg and granulocytes. It can interact with MyD88 and plays an important role in innate immunity and pattern recognition.

Product Details

Verified Reactivity	Human
Reported Reactivity	Baboon
Antibody Type	Monoclonal
Host Species	Mouse
Immunogen	Purified extracellular domain of human TLR10 (amino acids 20-474) (NP_001017388)
Formulation	Phosphate-buffered solution, pH 7.2, containing 0.09% sodium azide and BSA (origin USA)
Preparation	The antibody was purified by affinity chromatography and conjugated with PE under optimal conditions.
Concentration	Lot-specific (to obtain lot-specific concentration, please enter the lot number in our Concentration and Expiration Lookup or Certificate of Analysis online tools.)
Storage & Handling	The antibody solution should be stored undiluted between 2°C and 8°C, and protected from prolonged exposure to light. Do not freeze.
Application	FC - Quality tested
Recommended Usage	Each lot of this antibody is quality control tested by immunofluorescent staining with flow cytometric analysis . For flow cytometric staining, the suggested use of this reagent is 5 µl per million cells in 100 µl staining volume or 5 µl per 100 µl of whole blood.
Excitation Laser	Blue Laser (488 nm) Green Laser (532 nm)/Yellow-Green Laser (561 nm)
Application Notes	View more applications data for this product in our Scientific Poster Library .
Application References	1. Guan Y, <i>et al.</i> 2010. <i>J. Immunol.</i> 184:5094.
(PubMed link indicates BioLegend citation)	
RRID	AB_11219598 (BioLegend Cat. No. 354603) AB_11219791 (BioLegend Cat. No. 354604)

Antigen Details

Structure	Member of the toll-like receptor family, type I membrane protein, 91-100 kD
Distribution	B cells, Treg cells, plasmacytoid DCs

Function	Interacts with MyD88 and TRAF6, which results in NF- κ B activation and cytokine secretion
Ligand/Receptor	MyD88 and TRAF6
Cell Type	B cells, Dendritic cells, Tregs
Biology Area	Immunology, Innate Immunity
Molecular Family	CD Molecules, Toll Like Receptors
Antigen References	<ol style="list-style-type: none"> 1. Chuang T, <i>et al.</i> 2001. <i>Biochim. Biophys. Acta.</i> 1518:157. 2. Hornung V, <i>et al.</i> 2002. <i>J. Immunol.</i> 168:4531. 3. Bourke E, <i>et al.</i> 2003. <i>Blood</i> 102:956.
Gene ID	81793

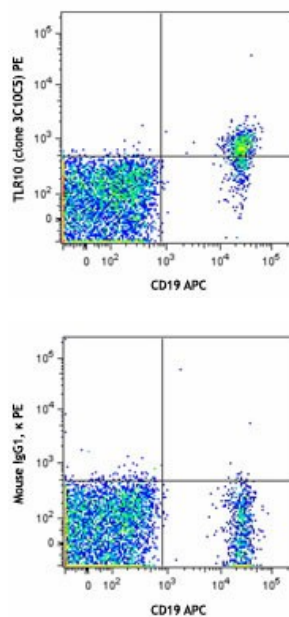
Related Protocols

[Cell Surface Flow Cytometry Staining Protocol](#)

Other Formats

PE anti-human CD290 (TLR10)

Product Data



Human peripheral blood lymphocytes were stained with CD19 APC and TLR10 (clone 3C10C5, top) PE or mouse IgG1, κ PE isotype control (bottom).

For research use only. Not for diagnostic use. Not for resale. BioLegend will not be held responsible for patent infringement or other violations that may occur with the use of our products.

*These products may be covered by one or more Limited Use Label Licenses (see the BioLegend Catalog or our website, www.biolegend.com/ordering#license). BioLegend products may not be transferred to third parties, resold, modified for resale, or used to manufacture commercial products, reverse engineer functionally similar materials, or to provide a service to third parties without written approval of BioLegend. By use of these products you accept the terms and conditions of all applicable Limited Use Label Licenses. Unless otherwise indicated, these products are for research use only and are not intended for human or animal diagnostic, therapeutic or commercial use.

BioLegend Inc., 8999 BioLegend Way, San Diego, CA 92121 www.biolegend.com
Toll-Free Phone: 1-877-Bio-Legend (246-5343) Phone: (858) 768-5800 Fax: (877) 455-9587

