

Purified anti-human CD146 (MUC18, Mel-CAM) Antibody

Catalog# / Size	342001 / 25 µg 342002 / 100 µg
Clone	SHM-57
Regulatory Status	RUO
Other Names	Muc-18, MCAM, Mel-CAM, S-endo
Isotype	Mouse IgG2a, κ
Description	CD146 is a 118 kD integral transmembrane glycoprotein also known as MUC18, S-Endo, MCAM, and Mel-CAM (melanoma cell adhesion molecule). It belongs to the immunoglobulin superfamily. CD146 is expressed on melanoma cells, epithelial cells, endothelial cells, fibroblasts, activated T cells, multipotent mesenchymal stromal cells, and activated keratinocytes. CD146 mediates heterophilic cell adhesion and regulates monocyte transendothelial migration. The ligand of CD146 remains to be identified.

Product Details

Verified Reactivity	Human
Reported Reactivity	African Green, Baboon, Cynomolgus
Antibody Type	Monoclonal
Host Species	Mouse
Formulation	Phosphate-buffered solution, pH 7.2, containing 0.09% sodium azide.
Preparation	The antibody was purified by affinity chromatography.
Concentration	0.5 mg/ml
Storage & Handling	The antibody solution should be stored undiluted between 2°C and 8°C.
Application	FC - Quality tested
Recommended Usage	Each lot of this antibody is quality control tested by immunofluorescent staining with flow cytometric analysis . For flow cytometric staining, the suggested use of this reagent is ≤0.5 µg per million cells in 100 µl volume. It is recommended that the reagent be titrated for optimal performance for each application.
RRID	AB_2143500 (BioLegend Cat. No. 342001) AB_2561324 (BioLegend Cat. No. 342002)

Antigen Details

Structure	118 kD integral glycoprotein, Ig superfamily
Distribution	Melanoma cells, epithelial cells, endothelial cells, activated T cells, multipotent mesenchymal stromal cells
Function	Adhesion, monocytes transendothelial migration
Cell Type	Endothelial cells, Epithelial cells, Mesenchymal cells, Mesenchymal Stem Cells, T cells
Biology Area	Cell Biology, Immunology, Neuroscience, Neuroscience Cell Markers, Stem Cells
Molecular Family	Adhesion Molecules, CD Molecules
Antigen References	1. Pickl WF, <i>et al.</i> 1997. <i>J. Immunol.</i> 158:2107 2. Weninger W, <i>et al.</i> 2000. <i>J. Invest. Dermatol.</i> 115:219

3. Sorrentino A, et al. 2008. *Exp. Hematol.* 36:1035
4. Bardin N, et al. 2009. *Arterioscler. Thromb. Vasc. Biol.* 29:746

Gene ID [4162](#)

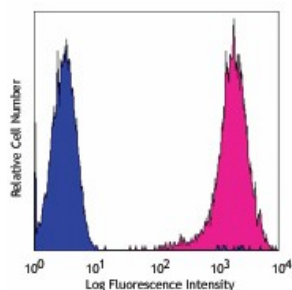
Related Protocols

[Cell Surface Flow Cytometry Staining Protocol](#)

Other Formats

Purified anti-human CD146 (MUC18, Mel-CAM), PE anti-human CD146 (MUC18, Mel-CAM), Alexa Fluor® 488 anti-human CD146 (MUC18, Mel-CAM), PE/Cyanine7 anti-human CD146 (MUC18, Mel-CAM), APC anti-human CD146 (MUC18, Mel-CAM), PerCP/Cyanine5.5 anti-human CD146 (MUC18, Mel-CAM)

Product Data



Human cervical cancer cell line, Hela, stained with purified SHM-57 conjugated with PE

For research use only. Not for diagnostic use. Not for resale. BioLegend will not be held responsible for patent infringement or other violations that may occur with the use of our products.

*These products may be covered by one or more Limited Use Label Licenses (see the BioLegend Catalog or our website, www.biolegend.com/ordering#license). BioLegend products may not be transferred to third parties, resold, modified for resale, or used to manufacture commercial products, reverse engineer functionally similar materials, or to provide a service to third parties without written approval of BioLegend. By use of these products you accept the terms and conditions of all applicable Limited Use Label Licenses. Unless otherwise indicated, these products are for research use only and are not intended for human or animal diagnostic, therapeutic or commercial use.

BioLegend Inc., 8999 BioLegend Way, San Diego, CA 92121 www.biolegend.com
Toll-Free Phone: 1-877-Bio-Legend (246-5343) Phone: (858) 768-5800 Fax: (877) 455-9587