

Purified anti-GFP Epitope Tag Antibody (Previously Covance catalog# MMS-118P)

Catalog# / Size	902605 / 25 µL 902601 / 200 µL 902602 / 500 µL
Clone	B34
Regulatory Status	RUO
Other Names	Green Fluorescent Protein
Previously	Covance Catalog# MMS-118P
Isotype	Mouse IgG1
Description	Green Fluorescent Protein (GFP) is a single chain 238 amino acid protein derived from the jellyfish <i>Aequoria victoria</i> . GFP emits a bright green fluorescence when illuminated with UV or blue light and is a useful tool for cellular and developmental biologists. Unlike other bioluminescent molecules, GFP does not require additional proteins, substrates or co-factors for its activity.

Product Details

Verified Reactivity	Green Fluorescent Protein Tag
Antibody Type	Monoclonal
Host Species	Mouse
Immunogen	Antibody B34, generated against purified wild type GFP, offers an alternative for detecting GFP and GFP variants including enhanced/mutant GFP.
Formulation	Phosphate-buffered solution + 0.03% Thimerosal.
Preparation	The antibody was purified by affinity chromatography.
Concentration	1 mg/ml
Storage & Handling	The antibody solution should be stored undiluted between 2°C and 8°C. Please note the storage condition for this antibody has been changed from -20°C to between 2°C and 8°C. You can also check your vial or your CoA to find the most accurate storage condition for this antibody.
Application	WB, Purification
Recommended Usage	Each lot of this antibody is quality control tested by Western blotting . The optimal working dilution should be determined for each specific assay condition. • WB: 1:5,000*
Application Notes	This antibody is effective in immunoblotting (WB) of GFP labeled proteins. *Predicted MW = 27 kD

Application References

1. Pecot MY, Malhotra V. 2004. *Cell*. 116:99.
2. Kessels MM, *et al.* 2001. *J Cell Biol*. 153:351.
3. Gerdes HH, Kaether C. 1996. *FEBS Lett*. 389:44.
4. Davis I, *et al.* 1995. *Dev Biol*. 170:726.
5. Chalfie M. 1995. *Photochem Photobio*. 62:651.
6. Stearns T. 1995. *Curr Biol*. 5:262.
7. Chalfie M, *et al.* 1994. *Science*. 263:802.
8. Lavy M, *et al.* 2007. *Curr Biol*. 17:947. (WB)
9. Hohl B, *et al.* 2013. *Protein Expr Purif*. 10:32. (WB)
10. Zhang Y, *et al.* 2007. *J Biol Chem*. 282:13022. (WB) [PubMed](#)
11. Asante D, *et al.* 2013. *J Cell Sci*. 126:5189. (WB) [PubMed](#)

12. Oh Y, *et al.* 2013. *Mol Biol Cell*. 24:1305. (WB) [PubMed](#)
13. Wloka C, *et al.* 2013. *J. Cell. Biol.* 200:271. (WB)
14. Redfern RE, *et al.* 2010. *Protein Sci.* 19:1948. (WB) [PubMed](#)

Product Citations

1. Shearer RF, *et al.* 2018. *Mol Biol Cell*. 29:1542. [PubMed](#)
2. Kennedy SP, *et al.* 2019. *Breast Cancer Res.* 21:43. [PubMed](#)
3. Borgermann N *et al.* 2019. *The EMBO journal*. 38(8) pii: e101496. [PubMed](#)
4. Shen K, *et al.* 2019. *Mol Cell*. 74:729. [PubMed](#)
5. Sakamaki JI, *et al.* 2017. *Mol Cell*. 66:517. [PubMed](#)
6. Robles-Valero J *et al.* 2017. *Cancer cell*. 32(5):608-623. [PubMed](#)
7. Stehle D, *et al.* 2018. *Sci Rep*. 8:12434. [PubMed](#)
8. Bauer CK, *et al.* 2019. *Am J Hum Genet*. 104:1139. [PubMed](#)
9. Bhatte N, *et al.* 2019. *FEBS J*. 286:4693. [PubMed](#)
10. Bhatte N, *et al.* 2020. *Wellcome Open Res*. 3:102. [PubMed](#)
11. Costé de Bagneaux P, *et al.* 2020. *PLoS Genet*. 16:e1008625. [PubMed](#)
12. Liu Y, *et al.* 2020. *Nat Commun*. 11:589. [PubMed](#)
13. McCaughey J, *et al.* 2019. *J Cell Biol*. 218:929. [PubMed](#)
14. Redfern R, *et al.* 2010. *Protein Sci*. 19:1948-1956. [PubMed](#)
15. Oh Y, *et al.* 2013. *Mol Biol Cell*. 24:1305-1320. [PubMed](#)
16. Asante D, *et al.* 2013. *J Cell Sci*. 126:5189-5197. [PubMed](#)
17. Zhang Y, Barbieri Q 2007. *J Biol Chem*. 282:13022-13032. [PubMed](#)
18. Zhang X, *et al.* 2016. *Nat Commun*. 7:12109. [PubMed](#)
19. Croucher D, *et al.* 2016. *Sci Signal*. 9: ra69. [PubMed](#)
20. Pogorelko G, *et al.* 2016. *PLoS One*. 11: 0159757. [PubMed](#)
21. Kravchick D, *et al.* 2016. *EMBO J*. 35: 1923 - 1934. [PubMed](#)
22. Eshleman N, *et al.* 2016. *RNA*. 22: 1200 - 1214. [PubMed](#)
23. Wang Y, *et al.* 2016. *Sci Rep*. 6:37213. [PubMed](#)
24. Manjunath LE, *et al.* 2020. *J Biol Chem*. 295:17009. [PubMed](#)
25. Dhingani N, *et al.* 2020. *Sci Rep*. 10:18648. [PubMed](#)
26. Herger A, *et al.* 2020. *PLoS Genet*. 16:e1008847. [PubMed](#)
27. den Brave F, *et al.* 2020. *Cell Rep*. 31:107680. [PubMed](#)

RRID

AB_2734671 (BioLegend Cat. No. 902605)
 AB_2565021 (BioLegend Cat. No. 902601)
 AB_2565022 (BioLegend Cat. No. 902602)

Antigen Details

Biology Area	Cell Biology
Gene ID	NA

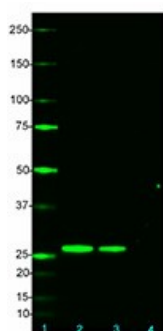
Related Protocols

[Western Blotting Protocol](#)

Other Formats

Purified anti-GFP Epitope Tag

Product Data



Western Blot showing specificity of Green Fluorescent Protein (GFP) (clone B34) 0.1 µg/ml . Lane 1: Molecular weight marker. Lane 2: 0.1 µg GFP. Lane 3: 0.05 µg GFP. Lane 4: BSA neg control.

For research use only. Not for diagnostic use. Not for resale. BioLegend will not be held responsible for patent infringement or other violations that may occur with the use of our products.

*These products may be covered by one or more Limited Use Label Licenses (see the BioLegend Catalog or our website, www.biolegend.com/ordering#license). BioLegend products may not be transferred to third parties, resold, modified for resale, or used to manufacture commercial products, reverse engineer functionally similar materials, or to provide a service to third parties without written approval of BioLegend. By use of these products you accept the terms and conditions of all applicable Limited Use Label Licenses. Unless otherwise indicated, these products are for research use only and are not intended for human or animal diagnostic, therapeutic or commercial use.

BioLegend Inc., 8999 BioLegend Way, San Diego, CA 92121 www.biolegend.com
Toll-Free Phone: 1-877-Bio-Legend (246-5343) Phone: (858) 768-5800 Fax: (877) 455-9587