

## Alexa Fluor® 647 anti-human CD146 Antibody

<b>Catalog# / Size</b>	361013 / 25 tests 361014 / 100 tests
<b>Clone</b>	P1H12
<b>Regulatory Status</b>	RUO
<b>Workshop</b>	HCDM listed
<b>Other Names</b>	Muc-18, MCAM, Mel-CAM, S-endo
<b>Isotype</b>	Mouse IgG1, κ
<b>Description</b>	CD146 is a 118 kD integral transmembrane glycoprotein that is also known as MUC18, S-Endo, MCAM, and Mel-CAM (melanoma cell adhesion molecule). It belongs to the immunoglobulin superfamily. CD146 is expressed on melanoma cells, epithelial cells, endothelial cells, fibroblasts, activated T cells, multipotent mesenchymal stromal cells, and activated keratinocytes. CD146 mediates heterophilic cell adhesion and regulates monocyte transendothelial migration. The ligand of CD146 remains to be identified.

### Product Details

---

<b>Verified Reactivity</b>	Human
<b>Reported Reactivity</b>	Mouse, Dog, Rabbit
<b>Antibody Type</b>	Monoclonal
<b>Host Species</b>	Mouse
<b>Immunogen</b>	Cultured human umbilical cells
<b>Formulation</b>	Phosphate-buffered solution, pH 7.2, containing 0.09% sodium azide and BSA (origin USA)
<b>Preparation</b>	The antibody was purified by affinity chromatography and conjugated with Alexa Fluor® 647 under optimal conditions.
<b>Concentration</b>	Lot-specific (to obtain lot-specific concentration, please enter the lot number in our <a href="#">Concentration and Expiration Lookup</a> or <a href="#">Certificate of Analysis</a> online tools.)
<b>Storage &amp; Handling</b>	The antibody solution should be stored undiluted between 2°C and 8°C, and protected from prolonged exposure to light. <b>Do not freeze.</b>
<b>Application</b>	<a href="#">FC - Quality tested</a>
<b>Recommended Usage</b>	Each lot of this antibody is quality control tested by <a href="#">immunofluorescent staining with flow cytometric analysis</a> . For flow cytometric staining, the suggested use of this reagent is 5 µl per million cells in 100 µl staining volume or 5 µl per 100 µl of whole blood.  * Alexa Fluor® 647 has a maximum emission of 668 nm when it is excited at 633 nm / 635 nm.  Alexa Fluor® and Pacific Blue™ are trademarks of Life Technologies Corporation.  <a href="#">View full statement regarding label licenses</a>
<b>Excitation Laser</b>	Red Laser (633 nm)
<b>Application Notes</b>	Additional reported applications (for the relevant formats of this clone) include: Western blotting <sup>3</sup> and IHC <sup>1,5</sup> .  Clone P1H12 cross-reacts to Dog <sup>2, 5</sup> .
<b>Application References</b>	1. Solovey A, <i>et al.</i> 1997. <i>N. Engl. J. Med.</i> 337:1584. (FC, IHC) 2. Lamerato-Kozicki AR, <i>et al.</i> 2006. <i>Exp. Hematol.</i> 34:870. (FC) 3. Balint K, <i>et al.</i> 2005. <i>J. Clin. Invest.</i> 115:3166. (WB)

- Neskey DM, et al. 2008. *J. Exp. Clin. Cancer Res.* 27:61. (ELISA)
- Kamstock D, et al. 2006. *Cancer Gene Therap.* 13:306. (IHC)

**RRID** AB\_2563048 (BioLegend Cat. No. 361013)  
AB\_2563049 (BioLegend Cat. No. 361014)

## Antigen Details

<b>Structure</b>	118 kD integral glycoprotein, Ig superfamily
<b>Distribution</b>	Melanoma cells, epithelial cells, endothelial cells, activated T cells, multipotent mesenchymal stromal cells
<b>Function</b>	Adhesion, monocytes transendothelial migration
<b>Cell Type</b>	Endothelial cells, Epithelial cells, Mesenchymal cells, Mesenchymal Stem Cells, T cells
<b>Biology Area</b>	Cell Biology, Immunology, Innate Immunity, Neuroscience, Neuroscience Cell Markers, Stem Cells
<b>Molecular Family</b>	Adhesion Molecules, CD Molecules
<b>Antigen References</b>	<ol style="list-style-type: none"><li>Pickl WF, et al. 1997. <i>J. Immunol.</i> 158:2107.</li><li>Weninger W, et al. 2000. <i>J. Invest. Dermatol.</i> 115:219.</li><li>Sorrentino A, et al. 2008. <i>Exp. Hematol.</i> 36:1035.</li><li>Bardin N, et al. 2009. <i>Arterioscler. Thromb. Vasc. Biol.</i> 29:746.</li></ol>
<b>Gene ID</b>	<a href="#">4162</a>

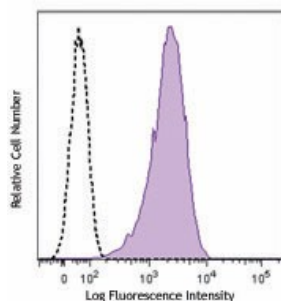
## Related Protocols

[Cell Surface Flow Cytometry Staining Protocol](#)

## Other Formats

PE anti-human CD146, Purified anti-human CD146, Brilliant Violet 421™ anti-human CD146, PE/Cyanine7 anti-human CD146, PerCP/Cyanine5.5 anti-human CD146, FITC anti-human CD146, Alexa Fluor® 647 anti-human CD146, APC anti-human CD146, TotalSeq™-A0134 anti-human CD146, Brilliant Violet 605™ anti-human CD146, Brilliant Violet 510™ anti-human CD146, Alexa Fluor® 488 anti-human CD146, APC/Fire™ 750 anti-human CD146, PE/Dazzle™ 594 anti-human CD146, Brilliant Violet 785™ anti-human CD146, Brilliant Violet 711™ anti-human CD146, PE/Cyanine5 anti-human CD146, Biotin anti-human CD146, TotalSeq™-C0134 anti-human CD146, TotalSeq™-B0134 anti-human CD146 Antibody, APC/Cyanine7 anti-human CD146

## Product Data



Human cervical cancer cell line, HeLa, was stained with anti-human CD146 (clone P1H12) Alexa Fluor® 647 (filled histogram) or mouse IgG1, κ Alexa Fluor® 647 isotype control (open histogram).

For research use only. Not for diagnostic use. Not for resale. BioLegend will not be held responsible for patent infringement or other violations that may occur with the use of our products.

\*These products may be covered by one or more Limited Use Label Licenses (see the BioLegend Catalog or our website, [www.biolegend.com/ordering#license](http://www.biolegend.com/ordering#license)). BioLegend products may not be transferred to third parties, resold, modified for resale, or used to manufacture commercial products, reverse engineer functionally similar materials, or to provide a service to third parties without written approval of BioLegend. By use of these products you accept the terms and conditions of all applicable Limited Use Label Licenses. Unless otherwise indicated, these products are for research use only and are not intended for human or animal diagnostic,

therapeutic or commercial use.

BioLegend Inc., 8999 BioLegend Way, San Diego, CA 92121 [www.biolegend.com](http://www.biolegend.com)  
Toll-Free Phone: 1-877-Bio-Legend (246-5343) Phone: (858) 768-5800 Fax: (877) 455-9587