

Alexa Fluor® 488 anti-human CD146 Antibody

Catalog# / Size	361019 / 25 tests 361020 / 100 tests
Clone	P1H12
Regulatory Status	RUO
Workshop	HCDM listed
Other Names	Muc-18, MCAM, Mel-CAM, S-endo
Isotype	Mouse IgG1, κ
Description	CD146 is a 118 kD integral transmembrane glycoprotein that is also known as MUC18, S-Endo, MCAM, and Mel-CAM (melanoma cell adhesion molecule). It belongs to the immunoglobulin superfamily. CD146 is expressed on melanoma cells, epithelial cells, endothelial cells, fibroblasts, activated T cells, multipotent mesenchymal stromal cells, and activated keratinocytes. CD146 mediates heterophilic cell adhesion and regulates monocyte transendothelial migration. The ligand of CD146 remains to be identified.

Product Details

Verified Reactivity	Human
Reported Reactivity	Mouse, Dog, Rabbit
Antibody Type	Monoclonal
Host Species	Mouse
Immunogen	Cultured human umbilical cells
Formulation	Phosphate-buffered solution, pH 7.2, containing 0.09% sodium azide and BSA (origin USA)
Preparation	The antibody was purified by affinity chromatography and conjugated with Alexa Fluor® 488 under optimal conditions.
Concentration	Lot-specific (to obtain lot-specific concentration, please enter the lot number in our Concentration and Expiration Lookup or Certificate of Analysis online tools.)
Storage & Handling	The antibody solution should be stored undiluted between 2°C and 8°C, and protected from prolonged exposure to light. Do not freeze.
Application	FC - Quality tested
Recommended Usage	Each lot of this antibody is quality control tested by immunofluorescent staining with flow cytometric analysis . For flow cytometric staining, the suggested use of this reagent is 5 µl per million cells in 100 µl staining volume or 5 µl per 100 µl of whole blood. It is recommended that the reagent be titrated for optimal performance for each application. * Alexa Fluor® 488 has a maximum emission of 519 nm when it is excited at 488 nm. Alexa Fluor® and Pacific Blue™ are trademarks of Life Technologies Corporation. View full statement regarding label licenses
Excitation Laser	Blue Laser (488 nm)
Application Notes	Additional reported applications (for the relevant formats of this clone) include: Western blotting ³ and IHC ^{1,5} . Clone P1H12 cross-reacts to Dog ^{2, 5} .
Application References	1. Solovey A, <i>et al.</i> 1997. <i>N. Engl. J. Med.</i> 337:1584. (FC, IHC) 2. Lamerato-Kozicki AR, <i>et al.</i> 2006. <i>Exp. Hematol.</i> 34:870. (FC)

- Balint K, et al. 2005. *J. Clin. Invest.* 115:3166. (WB)
- Neskey DM, et al. 2008. *J. Exp. Clin. Cancer Res.* 27:61. (ELISA)
- Kamstock D, et al. 2006. *Cancer Gene Therap.* 13:306. (IHC)

RRID AB_2783267 (BioLegend Cat. No. 361019)
AB_2783268 (BioLegend Cat. No. 361020)

Antigen Details

Structure	118 kD integral glycoprotein, Ig superfamily
Distribution	Melanoma cells, epithelial cells, endothelial cells, activated T cells, multipotent mesenchymal stromal cells
Function	Adhesion, monocytes transendothelial migration
Cell Type	Endothelial cells, Epithelial cells, Mesenchymal cells, Mesenchymal Stem Cells, T cells
Biology Area	Cell Biology, Immunology, Innate Immunity, Neuroscience, Neuroscience Cell Markers, Stem Cells
Molecular Family	Adhesion Molecules, CD Molecules
Antigen References	<ol style="list-style-type: none">Pickl WF, et al. 1997. <i>J. Immunol.</i> 158:2107.Weninger W, et al. 2000. <i>J. Invest. Dermatol.</i> 115:219.Sorrentino A, et al. 2008. <i>Exp. Hematol.</i> 36:1035.Bardin N, et al. 2009. <i>Arterioscler. Thromb. Vasc. Biol.</i> 29:746.
Gene ID	4162

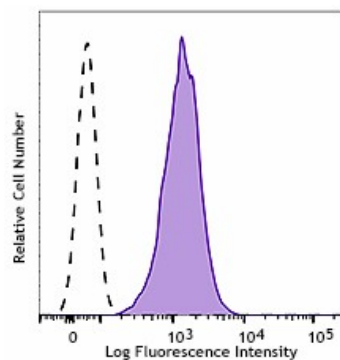
Related Protocols

[Cell Surface Flow Cytometry Staining Protocol](#)

Other Formats

PE anti-human CD146, Purified anti-human CD146, Brilliant Violet 421™ anti-human CD146, PE/Cyanine7 anti-human CD146, PerCP/Cyanine5.5 anti-human CD146, FITC anti-human CD146, Alexa Fluor® 647 anti-human CD146, APC anti-human CD146, TotalSeq™-A0134 anti-human CD146, Brilliant Violet 605™ anti-human CD146, Brilliant Violet 510™ anti-human CD146, Alexa Fluor® 488 anti-human CD146, APC/Fire™ 750 anti-human CD146, PE/Dazzle™ 594 anti-human CD146, Brilliant Violet 785™ anti-human CD146, Brilliant Violet 711™ anti-human CD146, PE/Cyanine5 anti-human CD146, Biotin anti-human CD146, TotalSeq™-C0134 anti-human CD146, TotalSeq™-B0134 anti-human CD146 Antibody, APC/Cyanine7 anti-human CD146

Product Data



Human cervical cancer cell line, HeLa, was stained with CD146 (clone P1H12) Alexa Fluor® 488 (filled histogram) or mouse IgG1, κ Alexa Fluor® 488 isotype control (open histogram).

*These products may be covered by one or more Limited Use Label Licenses (see the BioLegend Catalog or our website, www.biolegend.com/ordering#license). BioLegend products may not be transferred to third parties, resold, modified for resale, or used to manufacture commercial products, reverse engineer functionally similar materials, or to provide a service to third parties without written approval of BioLegend. By use of these products you accept the terms and conditions of all applicable Limited Use Label Licenses. Unless otherwise indicated, these products are for research use only and are not intended for human or animal diagnostic, therapeutic or commercial use.

BioLegend Inc., 8999 BioLegend Way, San Diego, CA 92121 www.biolegend.com
Toll-Free Phone: 1-877-Bio-Legend (246-5343) Phone: (858) 768-5800 Fax: (877) 455-9587