

Ultra-LEAF™ Purified anti-human CD3 Antibody

Catalog# / Size	317349 / 50 mg 317350 / 100 mg 317348 / 25 mg 317325 / 100 µg 317326 / 1 mg 317347 / 5 mg
Clone	OKT3
Regulatory Status	RUO
Workshop	HCDM listed
Other Names	T3, CD3ε
Isotype	Mouse IgG2a, κ
Description	CD3ε is a 20 kD chain of the CD3/T cell receptor (TCR) complex, which is composed of two CD3ε, one CD3γ, one CD3δ, one CD3ζ (CD247), and a T cell receptor (α/β or γ/δ) heterodimer. It is found on all mature T lymphocytes, NK T cells, and some thymocytes. CD3, also known as T3, is a member of the immunoglobulin superfamily that plays a role in antigen recognition, signal transduction, and T cell activation.

Product Details

Verified Reactivity	Human
Antibody Type	Monoclonal
Host Species	Mouse
Formulation	0.2 µm filtered in phosphate-buffered solution, pH 7.2, containing no preservative. Endotoxin level is <0.01 EU/µg of the protein (<0.001 ng/µg of the protein) as determined by the LAL test.
Preparation	The Ultra-LEAF™ (Low Endotoxin, Azide-Free) antibody was purified by affinity chromatography.
Concentration	The antibody is bottled at the concentration indicated on the vial, typically between 2 mg/mL and 3 mg/mL. Older lots may have also been bottled at 1 mg/mL. To obtain lot-specific concentration, please enter the lot number in our Concentration and Expiration Lookup or Certificate of Analysis online tools.
Storage & Handling	The antibody solution should be stored undiluted between 2°C and 8°C. This Ultra-LEAF™ solution contains no preservative; handle under aseptic conditions.
Application	FC - Quality tested
Recommended Usage	Each lot of this antibody is quality control tested by immunofluorescent staining with flow cytometric analysis . For flow cytometric staining, the suggested use of this reagent is ≤ 2.0 µg per million cells in 100 µl volume or 100 µl of whole blood. It is recommended that the reagent be titrated for optimal performance for each application.
Application Notes	The OKT3 monoclonal antibody reacts with an epitope on the epsilon-subunit within the human CD3 complex. Clone OKT3 can block the binding of clones SK7 and UCHT1. ⁴ The OKT3 antibody is able to induce T cell activation. Additional reported applications (for the relevant formats) include: immunohistochemical staining of acetone-fixed frozen sections and activation of T cells. The LEAF™ purified antibody (Endotoxin <0.1 EU/µg, Azide-Free, 0.2 µm filtered) is recommended for functional assays (Cat. No. 317304). For highly sensitive assays, we recommend Ultra-LEAF™ purified antibody (Cat. No. 317326) with a lower endotoxin limit than standard LEAF™ purified antibodies (Endotoxin <0.01 EU/µg).

Application References

(PubMed link indicates BioLegend citation)

- Schlossman S, *et al.* Eds. 1995. Leucocyte Typing V. Oxford University Press. New York.
- Knapp W. 1989. Leucocyte Typing IV. Oxford University Press New York.
- Barclay N, *et al.* 1997. The Leucocyte Antigen Facts Book. Academic Press Inc. San Diego.

4. Li B, *et al.* 2005. *Immunology* 116:487.
5. Jeong HY, *et al.* 2008. *J. Leukocyte Biol.* 83:755. [PubMed](#)
6. Alter G, *et al.* 2008. *J. Virol.* 82:9668. [PubMed](#)
7. Manevich-Mendelson E, *et al.* 2009. *Blood* 114:2344. [PubMed](#)
8. Pinto JP, *et al.* 2010. *Immunology.* 130:217. [PubMed](#)
9. Biggs MJ, *et al.* 2011. *J. R. Soc. Interface.* 8:1462. [PubMed](#)

Product Citations

1. Bak RO, *et al.* 2018. *Nat Protoc.* 13:358. [PubMed](#)
2. Wang J, *et al.* 2019. *Sci Rep.* 9:8445. [PubMed](#)
3. Christopher S Garriss *et al.* 2018. *Immunity.* 49(6):1148-1161. [PubMed](#)
4. Sun T, *et al.* 2019. *Haematologica.* 105:661. [PubMed](#)
5. Grandclaude M, *et al.* 2019. *Cell.* 179:432. [PubMed](#)
6. Mancuso RV, *et al.* 2020. *British Journal of Pharmacology.* 177(12):2696-2711.. [PubMed](#)
7. Sekine T, *et al.* 2020. *Cell.* 183:158. [PubMed](#)
8. Hu Y, *et al.* 2016. *J Exp Med.* 213: 2759 - 2772. [PubMed](#)
9. Hu BS, *et al.* 2020. *Cancer Cell Int.* 1.189583333. [PubMed](#)
10. Saragovi A, *et al.* 2020. *Elife.* 9:00. [PubMed](#)
11. Pan W, *et al.* 2020. *JCI Insight.* 5:00. [PubMed](#)
12. Campos Carrascosa L, *et al.* 2020. *J Immunother Cancer.* 8:00. [PubMed](#)
13. Evgin L, *et al.* 2020. *Nat Commun.* 2.671527778. [PubMed](#)
14. Correnti CE, *et al.* 2020. *Nat Struct Mol Biol.* 27:342. [PubMed](#)
15. Si J, *et al.* 2020. *Cancer Cell.* 38(4):551-566.e11. [PubMed](#)
16. Glassman CR, *et al.* 2021. *Cell.* 184(4):983-999.e24. [PubMed](#)
17. Clayton KL, *et al.* 2021. *Cell Host Microbe.* 29(3):435-447.e9. [PubMed](#)

RRID

[AB_2749888](#) (BioLegend Cat. No. 317349)
[AB_2749889](#) (BioLegend Cat. No. 317350)
[AB_2571995](#) (BioLegend Cat. No. 317348)
[AB_11147370](#) (BioLegend Cat. No. 317325)
[AB_11150592](#) (BioLegend Cat. No. 317326)
[AB_2571994](#) (BioLegend Cat. No. 317347)

Antigen Details

Structure	Ig superfamily, the subunits CD3 γ , CD3 δ , CD3 ζ (CD247) and TCR (α/β or γ/δ) form the CD3/TCR complex, 20 kD
Distribution	Mature T and NK T cells, thymocyte differentiation
Function	Antigen recognition, signal transduction, T cell activation
Ligand/Receptor	Peptide antigen bound to MHC
Cell Type	NKT cells, T cells, Thymocytes, Tregs
Biology Area	Immunology
Molecular Family	CD Molecules
Antigen References	<ol style="list-style-type: none"> 1. Barclay N, <i>et al.</i> 1993. <i>The Leucocyte FactsBook.</i> Academic Press. San Diego. 2. Beverly P, <i>et al.</i> 1981. <i>Eur. J. Immunol.</i> 11:329. 3. Lanier L, <i>et al.</i> 1986. <i>J. Immunol.</i> 137:2501.

Gene ID [916](#)

Related Protocols

[Cell Surface Flow Cytometry Staining Protocol](#)

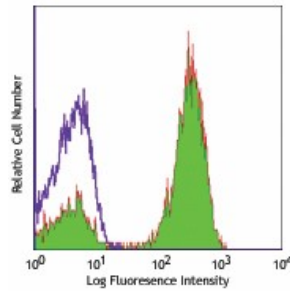
[T Cell Activation with anti-CD3 Antibodies Protocol - Human](#)

[T Cell Activation with anti-CD3 Antibodies Protocol - Mouse](#)

Other Formats

Purified anti-human CD3, FITC anti-human CD3, PE anti-human CD3, Alexa Fluor® 488 anti-human CD3, Alexa Fluor® 647 anti-human CD3, Pacific Blue™ anti-human CD3, APC anti-human CD3, Biotin anti-human CD3, Brilliant Violet 605™ anti-human CD3, Brilliant Violet 650™ anti-human CD3, Ultra-LEAF™ Purified anti-human CD3, Brilliant Violet 711™ anti-human CD3, Brilliant Violet 785™ anti-human CD3, Brilliant Violet 510™ anti-human CD3, PE/Cyanine7 anti-human CD3, PerCP/Cyanine5.5 anti-human CD3, PerCP anti-human CD3, Alexa Fluor® 700 anti-human CD3, APC/Cyanine7 anti-human CD3, Brilliant Violet 421™ anti-human CD3, PE/Dazzle™ 594 anti-human CD3, APC/Fire™ 750 anti-human CD3, GMP Ultra-LEAF™ Purified anti-human CD3 SF, PE/Cyanine5 anti-human CD3 Antibody

Product Data



Human peripheral blood lymphocytes stained with LEAF™ purified OKT3, followed by anti-mouse IgG FITC

For research use only. Not for diagnostic use. Not for resale. BioLegend will not be held responsible for patent infringement or other violations that may occur with the use of our products.

*These products may be covered by one or more Limited Use Label Licenses (see the BioLegend Catalog or our website, www.biolegend.com/ordering#license). BioLegend products may not be transferred to third parties, resold, modified for resale, or used to manufacture commercial products, reverse engineer functionally similar materials, or to provide a service to third parties without written approval of BioLegend. By use of these products you accept the terms and conditions of all applicable Limited Use Label Licenses. Unless otherwise indicated, these products are for research use only and are not intended for human or animal diagnostic, therapeutic or commercial use.

BioLegend Inc., 8999 BioLegend Way, San Diego, CA 92121 www.biolegend.com
Toll-Free Phone: 1-877-Bio-Legend (246-5343) Phone: (858) 768-5800 Fax: (877) 455-9587