

Purified anti-Apo E Antibody (Previously Covance catalog# SIG-39750)

Catalog# / Size	803403 / 1 mL 803401 / 200 µL
Clone	E6D7
Regulatory Status	RUO
Other Names	Apolipoprotein E, apolipoprotein E3, AD2, LDLQC5, LPG, ApoE
Previously	Signet Catalog# 9750-02 Signet Catalog# 9750-05 Signet Catalog# 9750-10 Covance Catalog# SIG-39750
Isotype	Mouse IgG1, κ
Description	Apo-E is a class of apolipoprotein primarily synthesized in the liver, but is also found in other tissues such as brain, kidneys, and spleen. Apo-E is a protein component of serum chylomicron and lipoprotein particles, playing essential roles in cholesterol transportation, homeostasis, and metabolism. The expression of Apo-E is induced by cholesterol-rich diets and hyperlipoproteinemia. In the central nervous system, Apo-E is produced by astrocytes and microglia. The Apo-E-containing lipoprotein particles play important functions in brain injury repair, neurogenesis, and synaptic plasticity. Apo-E has been found to be involved in the regulation of amyloid-β aggregation and clearance. Genetic polymorphisms of Apo-E are associated with neuron degenerative disorders including Alzheimer's disease.

Product Details

Verified Reactivity	Human
Antibody Type	Monoclonal
Host Species	Mouse
Immunogen	This antibody was raised against a synthetic peptide corresponding to amino acids surrounding the polymorphic amino acid position 158 of Apo-E.
Formulation	Phosphate-buffered solution (no preservatives or carrier proteins).
Preparation	The antibody was purified by affinity chromatography.
Concentration	1 mg/ml
Storage & Handling	The antibody solution should be stored undiluted between 2°C and 8°C. Please note the storage condition for this antibody has been changed from -20°C to between 2°C and 8°C. You can also check your vial or your CoA to find the most accurate storage condition for this antibody.
Application	WB - Quality tested
Recommended Usage	Each lot of this antibody is quality control tested by Western blotting . For Western blotting, the suggested use of this reagent is 1.0 - 5.0 µg/ml. It is recommended that the reagent be titrated for optimal performance for each application.
Application Notes	This antibody is effective in immunoblotting (WB). Clone E6D7 recognizes the E2, E3, and E4 isoforms of apolipoprotein E.
Application References	<ol style="list-style-type: none"> Munoz DG, Feldman H. 2000. <i>CMAJ</i>. 162(1):65-72. Hagberg JM, et al. 2000. <i>Physiol Genomics</i> 4(2):101-108. Saunders AM. 2000. <i>J. Neuropathol. Exp. Neurol.</i> 59(9):751-8. Golabek AA, et al. 2000. <i>Biophys. J.</i> 79(2):1008-15. Zunarelli E, et al. 2000. <i>Breast Cancer Res. Treat.</i> 63(3):193-8. Zunarelli E, et al. 2000. <i>Clin. Neuropathol.</i> 19(1):1-6. Tomiyama T, et al. 1999. <i>Cell Mol. Life Sci.</i> 56(3-4):268-79. Golabek AA., et al. 1999. <i>J. Biol. Chem.</i> 271(18):10602-6.
(PubMed link indicates BioLegend citation)	

RRID

AB_2564663 (BioLegend Cat. No. 803403)
AB_2564664 (BioLegend Cat. No. 803401)

Antigen Details

Biology Area	Cell Biology, Neurodegeneration, Neuroscience, Protein Trafficking and Clearance
Molecular Family	Apolipoproteins
Gene ID	348

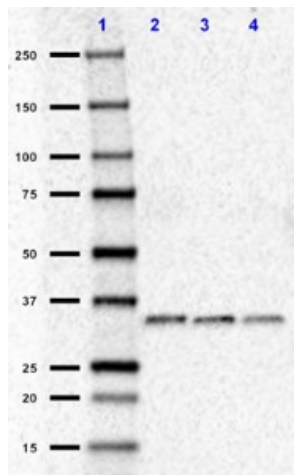
Related Protocols

[Western Blotting Protocol](#)

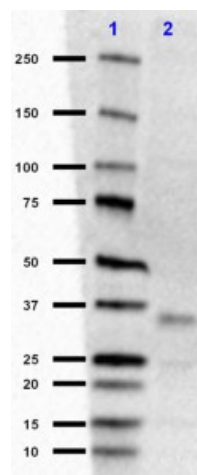
Other Formats

Purified anti-Apo E , PE anti-Apo E

Product Data



Western blot of purified anti-Apo E antibody (clone E6D7). Lane 1: Molecular weight marker; Lane 2: 0.05 μ g of APO E2 recombinant protein; Lane 3: 0.05 μ g of APO E3 recombinant protein; Lane 4: Lane 3: 0.05 μ g of APO E4 recombinant protein. The blot was incubated with 5 μ g/mL of the primary antibody overnight at 4°C, followed by incubation with HRP labeled goat anti-mouse IgG (Cat. No. 405306). Enhanced chemiluminescence was used as the detection system.



Western blot of purified anti-Apo E antibody (clone E6D7). Lane 1: Molecular weight marker; Lane 2: 40 μ g of human plasma. The blot was incubated with 1 μ g/mL of the primary antibody overnight at 4°C, followed by incubation with HRP labeled goat anti-mouse IgG (Cat. No. 405306). Enhanced chemiluminescence was used as the detection system.

use of our products.

*These products may be covered by one or more Limited Use Label Licenses (see the BioLegend Catalog or our website, www.biolegend.com/ordering#license). BioLegend products may not be transferred to third parties, resold, modified for resale, or used to manufacture commercial products, reverse engineer functionally similar materials, or to provide a service to third parties without written approval of BioLegend. By use of these products you accept the terms and conditions of all applicable Limited Use Label Licenses. Unless otherwise indicated, these products are for research use only and are not intended for human or animal diagnostic, therapeutic or commercial use.

BioLegend Inc., 8999 BioLegend Way, San Diego, CA 92121 www.biolegend.com
Toll-Free Phone: 1-877-Bio-Legend (246-5343) Phone: (858) 768-5800 Fax: (877) 455-9587