

Purified anti-*E. coli* RNA Polymerase β Antibody

Catalog# / Size	663006 / 100 μ g
Clone	NT63
Regulatory Status	RUO
Other Names	RNAP subunit beta, rpoB, groN, nitB, rif, ron, stl, stv, tabD, RNA polymerase subunit beta, Transcriptase subunit beta
Isotype	Mouse IgG2a
Description	RNA polymerase (RNAP or RNAPol) is an enzyme that produces primary transcript RNA. The β subunit is the second-largest subunit, and is encoded by the rpoB gene. RNA polymerase β is a subunit which, along with α (rpoC), limits core polymerase expression.

Product Details

Verified Reactivity	<i>E. coli</i>
Antibody Type	Monoclonal
Host Species	Mouse
Immunogen	Purified protein.
Formulation	Phosphate-buffered solution, pH 7.2.
Preparation	The antibody was purified by affinity chromatography.
Concentration	1.0 mg/ml
Storage & Handling	The antibody solution should be stored undiluted between 2°C and 8°C.
Application	WB - Quality tested ELISA - Reported in the literature, not verified in house
Recommended Usage	Each lot of this antibody is quality control tested by Western blotting . For Western blotting, the suggested use of this reagent is 0.00625 - 1.0 μ g per ml. It is recommended that the reagent be titrated for optimal performance for each application.
Application Notes	Clone NT63 recognizes epitope 922-1090.
Application References (PubMed link indicates BioLegend citation)	1. Thompson NE, <i>et al.</i> 1992. <i>Biochemistry</i> 31:7003.
Product Citations	1. Wood TE, <i>et al.</i> 2019. <i>Cell Rep.</i> 29:187. PubMed
RRID	AB_2565555 (BioLegend Cat. No. 663006)

Antigen Details

Structure	1252 amino acids with a predicted molecular weight of approximately 150 kD.
Distribution	Bacteria.
Function	Transcriptional regulator in bacteria.
Biology Area	Cell Biology, Transcription Factors
Molecular Family	Nuclear Markers

Antigen References

1. Thompson NE, *et al.* 1992. *Biochemistry* 31:7003.
2. Jerard Hurwitz, *et al.* 2005. *J. Biol. Chem.* 280:42477.
3. Hirata A, *et al.* 2008. *Nature* 451:851.

Gene ID

[948488](#)

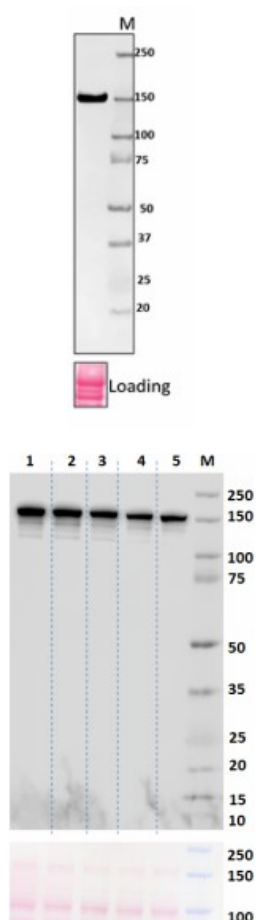
Related Protocols

[Western Blotting Protocol](#)

Other Formats

Purified anti-*E. coli* RNA Polymerase β

Product Data



Total lysates (15 μ g protein) from *E. coli* BL21 cells were resolved by electrophoresis (4-12% Bis-Tris gel), transferred to nitrocellulose, and probed with 1:100000 diluted (0.005 μ g/mL) purified anti-*E. coli* RNA Polymerase β antibody (clone NT63). Proteins were visualized using an HRP goat anti-mouse-IgG secondary antibody (clone Poly4053, Cat. No. 405306). Ponceau S staining (lower) was used as loading control. Lane M: Molecular weight ladder.

Total cell lysate from *E. coli* Strain BL21 (15 μ g protein) was resolved by 4-12% Bis-Tris gel electrophoresis, transferred to nitrocellulose, and probed with 0.1 μ g/mL (lane 1), 0.05 μ g/mL (lane 2), 0.025 μ g/mL (lane 3), 0.0125 μ g/mL (lane 4) and 0.00625 μ g/mL (lane 5) of Purified anti-*E. coli* RNA Polymerase β Antibody (clone NT63) (upper blot). Proteins were visualized using chemiluminescence detection after incubation with a 1:3000 dilution of HRP conjugated anti-mouse-IgG secondary antibody for anti-*E. coli* RNA Polymerase β Antibody (upper blot). Ponceau S staining (lower blot) was used as loading control. Lane M: Molecular Weight Marker

For research use only. Not for diagnostic use. Not for resale. BioLegend will not be held responsible for patent infringement or other violations that may occur with the use of our products.

*These products may be covered by one or more Limited Use Label Licenses (see the BioLegend Catalog or our website, www.biolegend.com/ordering#license). BioLegend products may not be transferred to third parties, resold, modified for resale, or used to manufacture commercial products, reverse engineer functionally similar materials, or to provide a service to third parties without written approval of BioLegend. By use of these products you accept the terms and conditions of all applicable Limited Use Label Licenses. Unless otherwise indicated, these products are for research use only and are not intended for human or animal diagnostic, therapeutic or commercial use.

8999 BioLegend Way, San Diego, CA 92121 www.biolegend.com
Toll-Free Phone: 1-877-Bio-Legend (246-5343) Phone: (858) 768-5800 Fax: (877) 455-9587

