

Human Activated CD8 T Cell ID Panel

Catalog# / Size	362252 / 25 tests
Clone	;;;
Regulatory Status	RUO
Other Names	TCell Panel
Isotype	Mouse IgG1, κ/Mouse IgG2a, κ
Description	This panel allows the identification of activated CD8 T cells using surface markers, and it is intended to be applied to sort or analyze cells using flow cytometry. The panel does not contain any conjugated PE antibody to leave room to incorporate an antibody of choice in the analysis, using a common and bright fluorophore. Activated CD8 T cells are a critical component of an immune response. Often called cytotoxic T lymphocytes or CTLs, are important for immune defense against intracellular pathogens such as viruses and bacteria, as well as tumor control. They may also contribute to autoimmunity when homeostasis of the immune system fails.

Product Details

Verified Reactivity	Human
Host Species	Mouse
Formulation	Antibodies supplied in phosphate-buffered solution, pH 7.2, containing 0.09% sodium azide and 0.2% (w/v) BSA (origin USA). 7-AAD supplied in PBS, pH 7.2 with 0.09% (w/v) sodium azide.
Preparation	This reagent contains one vial each of 7-AAD, APC/Cy7 conjugated anti-human CD3, FITC conjugated anti-human CD8a, APC conjugated anti-human CD25, and PE/Cy7 conjugated anti-human CD45RO at optimal concentration for multicolor flow cytometric analysis. CAUTION: 7-AAD is a potential carcinogen. It is recommended that the user wear protective clothing, gloves, and eye/face protection in order to avoid contact with skin and eyes.
Concentration	Lot-specific (to obtain lot-specific concentration, please enter the lot number in our Concentration and Expiration Lookup or Certificate of Analysis online tools.)
Storage & Handling	The reagent should be stored undiluted between 2°C and 8°C, and protected from prolonged exposure to light. Do not freeze.
Application	FC - Quality tested
Recommended Usage	Each lot of this antibody is quality control tested by immunofluorescent staining with flow cytometric analysis . For flow cytometric staining, the suggested use of this reagent is 5 µl per million cells in 100 µl staining volume or 5 µl per 100 µl of whole blood.
Application Notes	The panel has been verified by NanoString (https://www.nanostring.com) to be compatible with their Vantage 3D™ Immune Cell Profiling Assay for 3D Flow™ Analysis. This product consists of four antibody vials, and one 7-AAD vial. Antibodies include APC/Cy7 anti-human CD3, FITC anti-human CD8a, APC anti-human CD25, and PE/Cy7 anti-human CD45RO. For a more flexible panel building design, please visit our Multicolor Panel Selector tool. If you prefer another live/dead reagent, please explore our chemical probes and Zombie dyes

Antigen Details

Cell Type	Mesenchymal Stem Cells, Tregs
Biology Area	Immunology, Stem Cells
Molecular Family	CD Molecules

Antigen References

1. Taniguchi T, Minami Y. 1993. *Cell*. 73:5.
2. Waldmann T. 1991. *J. Biol. Chem.* 266:2681.
3. Beverley PC, Callard RE. 1981. *Eur. J. Immunol.* 11:329.
4. Lanier L, *et al.* 1986. *J. Immunol.* 137:2501-7.
5. Barclay N, *et al.* 1993. *The Leucocyte Antigen FactsBook*. Academic Press Inc. San Diego.
6. Thomas ML. 1989. *Annu. Rev. Immunol.* 7:339.
7. Trowbridge IS, Thomas ML. 1994. *Annu. Rev. Immunol.* 12:85.

Gene ID

[915](#)
[925](#)
[3559](#)
[5788](#)

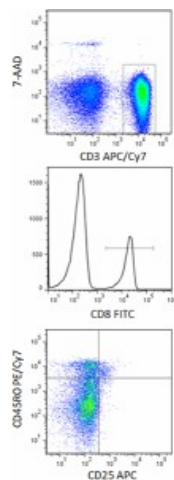
Related Protocols

[Cell Surface Flow Cytometry Staining Protocol](#)

Other Formats

Human Activated CD8 T Cell ID Panel

Product Data



Human PBMCs were stained using the Human Activated CD8 T Cell ID Panel consisting of 7-AAD, anti-human CD3 APC/Cy7, CD8 FITC, CD25 APC, and CD45RO PE/Cy7 conjugated antibodies. Images represent live (7-ADD⁻) CD3⁺ cells (top panel), CD8⁺ cells (middle panel, histogram), and CD45RO vs CD25 expression. Cells were gated on lymphocytes.

For research use only. Not for diagnostic use. Not for resale. BioLegend will not be held responsible for patent infringement or other violations that may occur with the use of our products.

*These products may be covered by one or more Limited Use Label Licenses (see the BioLegend Catalog or our website, www.biolegend.com/ordering#license). BioLegend products may not be transferred to third parties, resold, modified for resale, or used to manufacture commercial products, reverse engineer functionally similar materials, or to provide a service to third parties without written approval of BioLegend. By use of these products you accept the terms and conditions of all applicable Limited Use Label Licenses. Unless otherwise indicated, these products are for research use only and are not intended for human or animal diagnostic, therapeutic or commercial use.

8999 BioLegend Way, San Diego, CA 92121 www.biolegend.com
Toll-Free Phone: 1-877-Bio-Legend (246-5343) Phone: (858) 768-5800 Fax: (877) 455-9587