

## FITC anti-human IgD Antibody

<b>Catalog# / Size</b>	307807 / 25 tests 307808 / 100 tests
<b>Clone</b>	W18340F
<b>Regulatory Status</b>	RUO
<b>Other Names</b>	Ig delta chain C region
<b>Isotype</b>	Rat IgG2a, $\kappa$
<b>Description</b>	IgD, a member of the immunoglobulin (Ig) family, is expressed in naïve B cells. It has 3 Ig-like domains and exists in a transmembrane and a soluble form. In general, IgD is not secreted and usually its expression is lost after the Ig isotype switch. After antigen binding, IgD signals through the CD79a/CD79b (Ig $\alpha$ /Ig $\beta$ ) heterodimer, resulting in the activation of the B cell. (BioLegend Website)

### Product Details

---

<b>Verified Reactivity</b>	Human
<b>Antibody Type</b>	Monoclonal
<b>Host Species</b>	Rat
<b>Immunogen</b>	Native human IgD protein (full length)
<b>Formulation</b>	Phosphate-buffered solution, pH 7.2, containing 0.09% sodium azide and BSA (origin USA)
<b>Preparation</b>	The antibody was purified by affinity chromatography and conjugated with FITC under optimal conditions.
<b>Concentration</b>	Lot-specific (to obtain lot-specific concentration, please enter the lot number in our <a href="#">Concentration and Expiration Lookup</a> or <a href="#">Certificate of Analysis</a> online tools.)
<b>Storage &amp; Handling</b>	The antibody solution should be stored undiluted between 2°C and 8°C, and protected from prolonged exposure to light. <b>Do not freeze.</b>
<b>Application</b>	<a href="#">FC - Quality tested</a>
<b>Recommended Usage</b>	Each lot of this antibody is quality control tested by <a href="#">immunofluorescent staining with flow cytometric analysis</a> . For flow cytometric staining, the suggested use of this reagent is 5 $\mu$ L per million cells in 100 $\mu$ L staining volume or 5 $\mu$ L per 100 $\mu$ L of whole blood. It is recommended that the reagent be titrated for optimal performance for each application.
<b>Excitation Laser</b>	Blue Laser (488 nm)
<b>Application Notes</b>	This clone does not cross react with mouse tissues.
<b>RRID</b>	AB_2894456 (BioLegend Cat. No. 307807) AB_2894456 (BioLegend Cat. No. 307808)

### Antigen Details

---

<b>Distribution</b>	Naïve B cells
<b>Function</b>	Antigen binding, B cell activation
<b>Cell Type</b>	B cells
<b>Biology Area</b>	Immunology
<b>Antigen References</b>	

1. Geisberger R, *et al.* 2006. *Immunology*. 118:429-37.
2. Weller S, *et al.* 2005. *Eur J Immunol*. 35:2789-92.
3. Brandtzaeg P & Johansen FE. 2005. *Immunol Rev*. 206:32-63.

Gene ID

[3495](#)

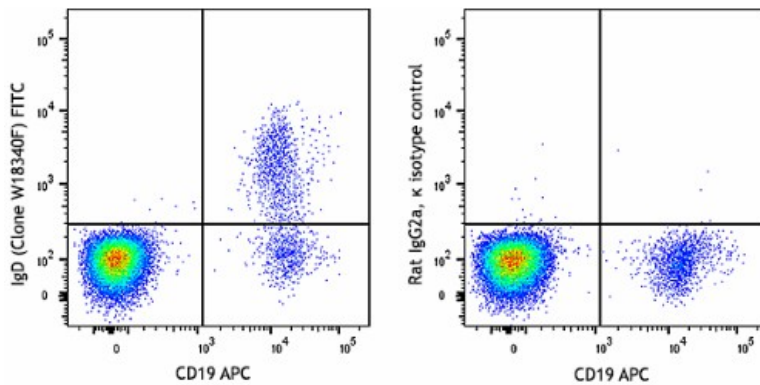
## Related Protocols

[Cell Surface Flow Cytometry Staining Protocol](#)

## Other Formats

PE anti-human IgD, Purified anti-human IgD, Spark YG™ 581 anti-human IgD, PerCP/Cyanine5.5 anti-human IgD, FITC anti-human IgD, PE/Cyanine7 anti-human IgD

## Product Data



Human peripheral blood lymphocytes were stained with CD19 APC and anti-human IgD (Clone W18340F) FITC (left) or rat IgG2a, κ FITC isotype control (right).

For research use only. Not for diagnostic use. Not for resale. BioLegend will not be held responsible for patent infringement or other violations that may occur with the use of our products.

\*These products may be covered by one or more Limited Use Label Licenses (see the BioLegend Catalog or our website, [www.biolegend.com/ordering#license](http://www.biolegend.com/ordering#license)). BioLegend products may not be transferred to third parties, resold, modified for resale, or used to manufacture commercial products, reverse engineer functionally similar materials, or to provide a service to third parties without written approval of BioLegend. By use of these products you accept the terms and conditions of all applicable Limited Use Label Licenses. Unless otherwise indicated, these products are for research use only and are not intended for human or animal diagnostic, therapeutic or commercial use.

8999 BioLegend Way, San Diego, CA 92121 [www.biolegend.com](http://www.biolegend.com)  
Toll-Free Phone: 1-877-Bio-Legend (246-5343) Phone: (858) 768-5800 Fax: (877) 455-9587