

Biotin anti-human/mouse SSEA-3 Antibody

Catalog# / Size	330319 / 100 µg
Clone	MC-631
Regulatory Status	RUO
Other Names	Stage-Specific Embryonic Antigen-3
Isotype	Rat IgM, κ
Description	Stage-Specific Embryonic Antigen-3 (SSEA-3) is an internal core structure of glob-series glycolipids (R-Galβ1-3GalNAcβ1-3Galα1-4Galβ1-R). SSEA-3 is expressed on human teratocarcinoma cells (embryonal carcinoma, EC), embryonic stem cells (ESC), embryonic germ cells (EG), and preimplantation embryos. The expression of SSEA-3 on human ESC is downregulated upon differentiation. SSEA-3 is also expressed by mouse on unfertilized eggs and preimplantation to early cleaved embryos.

Product Details

Verified Reactivity	Human, Mouse
Reported Reactivity	African Green
Antibody Type	Monoclonal
Host Species	Rat
Immunogen	4-8 cell stage mouse embryos
Formulation	Phosphate-buffered solution, pH 7.2, containing 0.09% sodium azide.
Preparation	The antibody was purified by affinity chromatography and conjugated with biotin under optimal conditions.
Concentration	0.5 mg/ml
Storage & Handling	The antibody solution should be stored undiluted between 2°C and 8°C. Do not freeze.
Application	FC - Quality tested
Recommended Usage	Each lot of this antibody is quality control tested by immunofluorescent staining with flow cytometric analysis . For flow cytometric staining, the suggested use of this reagent is ≤0.5 µg per million cells in 100 µl volume. It is recommended that the reagent be titrated for optimal performance for each application.
Application Notes	Additional reported applications (for the relevant formats) include: immunofluorescence microscopy ¹ .
Application References (PubMed link indicates BioLegend citation)	1. Kannagi R, <i>et al.</i> 1983. <i>EMBO</i> 2:2355. (IF) 2. Kaufmann B, <i>et al.</i> 2005. <i>Virology</i> 332:189. (ELISA)
RRID	AB_2687025 (BioLegend Cat. No. 330319)

Antigen Details

Distribution	Embryonic stemcells
Cell Type	Embryonic Stem Cells
Biology Area	Cell Biology, Immunology, Stem Cells

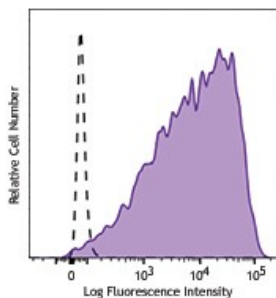
Gene ID

[93961](#)

Other Formats

PE anti-human/mouse SSEA-3, Alexa Fluor® 488 anti-human/mouse SSEA-3, Purified anti-human/mouse SSEA-3, Alexa Fluor® 647 anti-human/mouse SSEA-3, APC/Cyanine7 anti-human/mouse SSEA-3, Biotin anti-human/mouse SSEA-3, FITC anti-human/mouse SSEA-3, PerCP/Cyanine5.5 anti-human/mouse SSEA-3, PE/Cyanine7 anti-human/mouse SSEA-3

Product Data



NCCIT, human teratocarcinoma cell line stained with MC-631 Biotin, followed by Streptavidin PE (filled histogram), and Rat IgM κ Biotin, followed by Streptavidin PE (dashed histogram).

For research use only. Not for diagnostic use. Not for resale. BioLegend will not be held responsible for patent infringement or other violations that may occur with the use of our products.

*These products may be covered by one or more Limited Use Label Licenses (see the BioLegend Catalog or our website, www.biolegend.com/ordering#license). BioLegend products may not be transferred to third parties, resold, modified for resale, or used to manufacture commercial products, reverse engineer functionally similar materials, or to provide a service to third parties without written approval of BioLegend. By use of these products you accept the terms and conditions of all applicable Limited Use Label Licenses. Unless otherwise indicated, these products are for research use only and are not intended for human or animal diagnostic, therapeutic or commercial use.

8999 BioLegend Way, San Diego, CA 92121 www.biolegend.com
Toll-Free Phone: 1-877-Bio-Legend (246-5343) Phone: (858) 768-5800 Fax: (877) 455-9587