

## APC anti-human CD10 Antibody

<b>Catalog# / Size</b>	312209 / 25 tests 312210 / 100 tests
<b>Clone</b>	HI10a
<b>Regulatory Status</b>	RUO
<b>Workshop</b>	V CD10.7
<b>Other Names</b>	Common acute lymphoblastic leukemia antigen (CALLA), Enkephalinase, Neutral endopeptidase, Neprilysin
<b>Isotype</b>	Mouse IgG1, κ
<b>Description</b>	CD10 is a 100 kD neutral endopeptidase and a member of the metalloprotease family. It is a type II transmembrane protein also known as common acute lymphoblastic leukemia antigen (CALLA), enkephalinase, and neprilysin. CD10 is expressed on B cell precursors, T cell precursors, and neutrophils. CD10 is involved in B cell development and has been shown to bind opioid enkephalins, bradykinin, angiotensins I and II, and other biologically active peptides.

### Product Details

---

<b>Verified Reactivity</b>	Human, Cynomolgus, Rhesus
<b>Reported Reactivity</b>	African Green, Baboon, Capuchin monkey, Chimpanzee
<b>Antibody Type</b>	Monoclonal
<b>Host Species</b>	Mouse
<b>Formulation</b>	Phosphate-buffered solution, pH 7.2, containing 0.09% sodium azide and BSA (origin USA)
<b>Preparation</b>	The antibody was purified by affinity chromatography, and conjugated with APC under optimal conditions.
<b>Concentration</b>	Lot-specific (to obtain lot-specific concentration, please enter the lot number in our <a href="#">Concentration and Expiration Lookup</a> or <a href="#">Certificate of Analysis</a> online tools.)
<b>Storage &amp; Handling</b>	The antibody solution should be stored undiluted between 2°C and 8°C, and protected from prolonged exposure to light. <b>Do not freeze.</b>
<b>Application</b>	<a href="#">FC - Quality tested</a>
<b>Recommended Usage</b>	Each lot of this antibody is quality control tested by <a href="#">immunofluorescent staining with flow cytometric analysis</a> . For flow cytometric staining, the suggested use of this reagent is 5 µl per million cells in 100 µl staining volume or 5 µl per 100 µl of whole blood.
<b>Excitation Laser</b>	Red Laser (633 nm)
<b>Product Citations</b>	<ol style="list-style-type: none"><li>1. Dauby N, <i>et al.</i> 2014. J Infect Dis. 210:1275. <a href="#">PubMed</a></li><li>2. Lee JK, <i>et al.</i> 2015. Front Cell Dev Biol. 3:13. <a href="#">PubMed</a></li><li>3. Viciani E, <i>et al.</i> 2016. Sci Rep. 6:20609. <a href="#">PubMed</a></li><li>4. Guo R, <i>et al.</i> 2020. Nat Microbiol. 0.938194444. <a href="#">PubMed</a></li><li>5. Wang J, <i>et al.</i> 2020. Cell. 183(7):1867-1883.e26. <a href="#">PubMed</a></li><li>6. Carlucci PM, <i>et al.</i> 2018. JCI Insight. 3. <a href="#">PubMed</a></li><li>7. Dos Santos JC, <i>et al.</i> 2019. Cell Rep. 28:2659. <a href="#">PubMed</a></li></ol>
<b>RRID</b>	AB_314920 (BioLegend Cat. No. 312209) AB_314921 (BioLegend Cat. No. 312210)

### Antigen Details

---

<b>Structure</b>	Type II transmembrane metalloprotease family, 100 kD
<b>Distribution</b>	B cell precursors, T cell precursors, neutrophils
<b>Function</b>	Zinc-binding metalloproteinase, B cell development
<b>Ligand/Receptor</b>	Biologically active peptides including opioid enkephalins, bradykinin, angiotensins I & II
<b>Cell Type</b>	B cells, Neutrophils
<b>Biology Area</b>	Immunology
<b>Molecular Family</b>	CD Molecules
<b>Antigen References</b>	1. Shipp M, <i>et al.</i> 1993. <i>Blood</i> 82:1052. 2. Lu B, <i>et al.</i> 1995. <i>J. Exp. Med.</i> 181:2271.
<b>Gene ID</b>	<a href="#">4311</a>

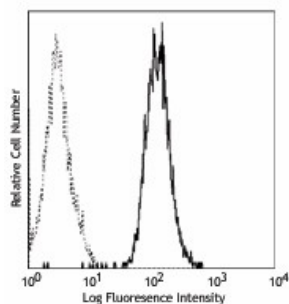
## Related Protocols

[Cell Surface Flow Cytometry Staining Protocol](#)

## Other Formats

Purified anti-human CD10, PE anti-human CD10, PE/Cyanine5 anti-human CD10, FITC anti-human CD10, APC anti-human CD10, APC/Cyanine7 anti-human CD10, PE/Cyanine7 anti-human CD10, PerCP/Cyanine5.5 anti-human CD10, Brilliant Violet 421™ anti-human CD10, Brilliant Violet 510™ anti-human CD10, Brilliant Violet 605™ anti-human CD10, Purified anti-human CD10 (Maxpar® Ready), Brilliant Violet 711™ anti-human CD10, PE/Dazzle™ 594 anti-human CD10, APC/Fire™ 750 anti-human CD10, TotalSeq™-A0062 anti-human CD10, TotalSeq™-C0062 anti-human CD10, TotalSeq™-B0062 anti-human CD10, Brilliant Violet 785™ anti-human CD10, TotalSeq™-D0062 anti-human CD10, GMP APC anti-human CD10, GMP FITC anti-human CD10

## Product Data



Nalm-6 cell line stained with purified HI10a and detected with anti-mouse IgGs-FITC

For research use only. Not for diagnostic use. Not for resale. BioLegend will not be held responsible for patent infringement or other violations that may occur with the use of our products.

\*These products may be covered by one or more Limited Use Label Licenses (see the BioLegend Catalog or our website, [www.biolegend.com/ordering#license](http://www.biolegend.com/ordering#license)). BioLegend products may not be transferred to third parties, resold, modified for resale, or used to manufacture commercial products, reverse engineer functionally similar materials, or to provide a service to third parties without written approval of BioLegend. By use of these products you accept the terms and conditions of all applicable Limited Use Label Licenses. Unless otherwise indicated, these products are for research use only and are not intended for human or animal diagnostic, therapeutic or commercial use.

8999 BioLegend Way, San Diego, CA 92121 [www.biolegend.com](http://www.biolegend.com)  
Toll-Free Phone: 1-877-Bio-Legend (246-5343) Phone: (858) 768-5800 Fax: (877) 455-9587