

Alexa Fluor® 488 anti-human Cytokeratin 7 Antibody

Catalog# / Size	601605 / 25 µg 601606 / 100 µg
Clone	W16155A
Regulatory Status	RUO
Other Names	Keratin type II cytoskeletal 7, Cytokeratin-7, CK-7, Keratin-7, K7, Type-II keratin Kb7, Sarcolectin, SCL, Cytokeratin 7, Keratin 7
Isotype	Rat IgG2a, κ
Description	Keratin 7 (KRT7) belongs to type II keratin and is expressed in the epithelia lining the cavities of internal organs, gland ducts and blood vessels. The function of KRT7 is still not clear but it has been suggested involved in the translational regulation of the human papillomavirus type 16 E7 mRNA (HPV16 E7). In cancer, the expression of KRT7 is observed in many types of carcinoma and is associated with neoplasm progression. The diverse and unique expression pattern of KRT7 is often used as a diagnosis indicator in epithelial origin carcinoma. For example, aberrant KRT7 expression is observed in triple negative breast cancer. In bladder cancer, loss of KRT7 results in promoting proliferation of the bladder urothelium.

Product Details

Verified Reactivity	Human
Antibody Type	Monoclonal
Host Species	Rat
Immunogen	Human KRT7 peptide (446-462) conjugated to KLH.
Formulation	Phosphate-buffered solution, pH 7.2, containing 0.09% sodium azide.
Preparation	The antibody was purified by affinity chromatography and conjugated with Alexa Fluor® 488 under optimal conditions.
Concentration	0.5 mg/ml
Storage & Handling	The antibody solution should be stored undiluted between 2°C and 8°C, and protected from prolonged exposure to light. Do not freeze.
Application	ICC - Quality tested SB - Reported in the literature. not verified in house
Recommended Usage	Each lot of this antibody is quality control tested by immunocytochemistry. For immunocytochemistry, a concentration range of 2.5 - 5.0 µg/ml (1:100-1:200 dilution) is recommended. It is recommended that the reagent be titrated for optimal performance for each application. * Alexa Fluor® 488 has a maximum emission of 519 nm when it is excited at 488 nm. Alexa Fluor® and Pacific Blue™ are trademarks of Life Technologies Corporation. View full statement regarding label licenses
Excitation Laser	Blue Laser (488 nm)
Application Notes	This antibody does not react with mouse (in-house tested). Additional reported applications (for the relevant formats) include: spatial biology (IBEX) ^{1,2} .
Additional Product Notes	Iterative Bleaching Extended multi-plexity (IBEX) is a fluorescent imaging technique capable of highly-multiplexed spatial analysis. The method relies on cyclical bleaching of panels of fluorescent antibodies in order to image and analyze many markers over multiple cycles of staining, imaging, and, bleaching. It is a community-developed open-access method developed by the Center for Advanced Tissue Imaging (CAT-I) in the National Institute of Allergy and Infectious Diseases (NIAID, NIH).

Application References

(PubMed link indicates BioLegend citation)

1. Radtke AJ, *et al.* 2020. *Proc Natl Acad Sci USA*. 117:33455-33465. (SB) [PubMed](#)
2. Radtke AJ, *et al.* 2022. *Nat Protoc*. 17:378-401. (SB) [PubMed](#)

RRID AB_2728458 (BioLegend Cat. No. 601605)
AB_2728459 (BioLegend Cat. No. 601606)

Antigen Details

Structure	Type II cytokeratin. 469 amino acids with a predicted molecular weight of 51 kD.
Distribution	Cytoplasm.
Function	KRT7 is a type II keratin, involved in the translational regulation of the human papillomavirus type 16 E7 mRNA.
Interaction	KRT7 interacts with EIF3S10, HPV16 E7, and GPER1.
Biology Area	Cell Biology, Cell Motility/Cytoskeleton/Structure, Neuroscience, Neuroscience Cell Markers
Molecular Family	Intermediate Filaments
Antigen References	<ol style="list-style-type: none">1. Tajima Y, <i>et al.</i> 2017. <i>Sci Rep</i>. 7:40684.2. Huang B, <i>et al.</i> 2016. <i>Oncogene</i>. 35:4927.3. Szponar A, <i>et al.</i> 2012. <i>Virchows Arch</i>. 460:423.4. Sano M, <i>et al.</i> 2010. <i>Int J Oncol</i>. 36:321.
Gene ID	3855

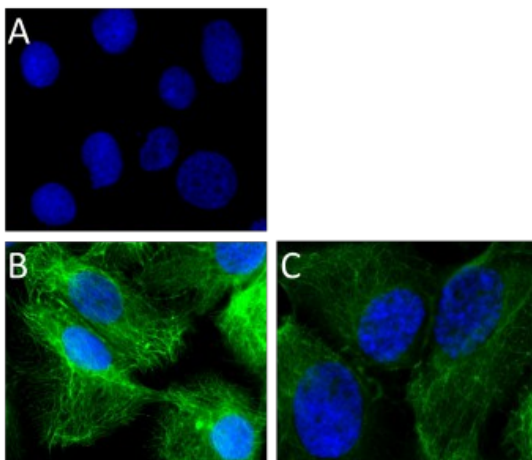
Related Protocols

[Immunocytochemistry Staining Protocol](#)

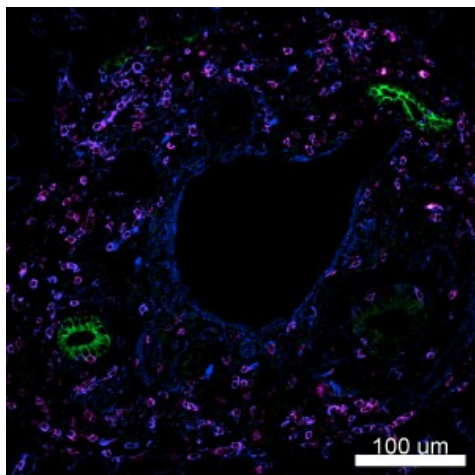
Other Formats

Purified anti-human Cytokeratin 7, Alexa Fluor® 594 anti-human Cytokeratin 7, Alexa Fluor® 488 anti-human Cytokeratin 7, Alexa Fluor® 647 anti-human Cytokeratin 7

Product Data



HaCaT cells were fixed with 4% paraformaldehyde (PFA) for 10 minutes, permeabilized with 0.5% Triton X-100 for 3 minutes, and blocked with 5% FBS for 60 minutes. Then the cells were intracellularly stained overnight at 4°C with (A) 1: 100 diluted (5 µg/ml) Alexa Fluor® 488 rat IgG2a (Cat. No. 400525) or with Alexa Fluor® 488 anti-human Cytokeratin 7 antibody (green) at (B) 1:100 (5 µg/ml) and (C) 1:200 (2.5 µg/ml) dilution. Nuclei were counterstained with DAPI (blue). The image was captured with a 60X objective.



Confocal image of human liver sample acquired using the IBEX method of highly multiplexed antibody-based imaging: Cytokeratin 7 (green) in Cycle 1, CD44 (blue) in Cycle 4, and CD45 (magenta) in Cycle 4. Tissues were prepared using ~1% (vol/vol) formaldehyde and a detergent. Following fixation, samples are immersed in 30% (wt/vol) sucrose for cryoprotection. Images are courtesy of Drs. Andrea J. Radtke and Ronald N. Germain of the Center for Advanced Tissue Imaging (CAT-I) in the National Institute of Allergy and Infectious Diseases (NIAID, NIH).

For research use only. Not for diagnostic use. Not for resale. BioLegend will not be held responsible for patent infringement or other violations that may occur with the use of our products.

*These products may be covered by one or more Limited Use Label Licenses (see the BioLegend Catalog or our website, www.biolegend.com/ordering#license). BioLegend products may not be transferred to third parties, resold, modified for resale, or used to manufacture commercial products, reverse engineer functionally similar materials, or to provide a service to third parties without written approval of BioLegend. By use of these products you accept the terms and conditions of all applicable Limited Use Label Licenses. Unless otherwise indicated, these products are for research use only and are not intended for human or animal diagnostic, therapeutic or commercial use.

8999 BioLegend Way, San Diego, CA 92121 www.biolegend.com
Toll-Free Phone: 1-877-Bio-Legend (246-5343) Phone: (858) 768-5800 Fax: (877) 455-9587