

## Pacific Blue™ anti-mouse Ly-6G Antibody

<b>Catalog# / Size</b>	127611 / 25 µg 127612 / 100 µg
<b>Clone</b>	1A8
<b>Regulatory Status</b>	RUO
<b>Other Names</b>	Lymphocyte antigen 6 complex, locus G
<b>Isotype</b>	Rat IgG2a, κ
<b>Description</b>	Lymphocyte antigen 6 complex, locus G (Ly-6G), a 21-25 kD GPI-anchored protein, is expressed on the majority of myeloid cells in bone marrow and peripheral granulocytes.

### Product Details

---

<b>Verified Reactivity</b>	Mouse
<b>Antibody Type</b>	Monoclonal
<b>Host Species</b>	Rat
<b>Immunogen</b>	Ly-6G transfected EL-4J cell line.
<b>Formulation</b>	Phosphate-buffered solution, pH 7.2, containing 0.09% sodium azide.
<b>Preparation</b>	The antibody was purified by affinity chromatography, and conjugated with Pacific Blue™ under optimal conditions.
<b>Concentration</b>	0.5 mg/ml
<b>Storage &amp; Handling</b>	The antibody solution should be stored undiluted between 2°C and 8°C, and protected from prolonged exposure to light. <b>Do not freeze.</b>
<b>Application</b>	<a href="#">FC - Quality tested</a>
<b>Recommended Usage</b>	<p>Each lot of this antibody is quality control tested by <a href="#">immunofluorescent staining with flow cytometric analysis</a>. For flow cytometric staining, the suggested use of this reagent is ≤ 1.0 µg per 10<sup>6</sup> cells in 100 µl volume or 100 µl of whole blood. It is recommended that the reagent be titrated for optimal performance for each application.</p> <p>* Pacific Blue™ has a maximum emission of 455 nm when it is excited at 405 nm. Prior to using Pacific Blue™ conjugate for flow cytometric analysis, please verify your flow cytometer's capability of exciting and detecting the fluorochrome.</p> <p>Alexa Fluor® and Pacific Blue™ are trademarks of Life Technologies Corporation.</p> <p><a href="#">View full statement regarding label licenses</a></p>
<b>Excitation Laser</b>	Violet Laser (405 nm)
<b>Application Notes</b>	<p>While 1A8 recognizes only Ly-6G, clone RB6-8C5 recognizes both Ly-6G and Ly-6C. Clone RB6-8C5 binds with high affinity to mouse Ly-6G molecules and to a lower extent to Ly-6C<sup>15</sup>. Clone RB6-8C5 impairs the binding of anti-mouse Ly-6G clone 1A8<sup>15</sup>. However, clone RB6-8C5 is able to stain in the presence of anti-mouse Ly-6C clone HK1.4<sup>16</sup>.</p> <p>Additional reported applications (for the relevant formats) include: immunohistochemistry<sup>9</sup> of frozen sections<sup>10</sup> and paraffin-embedded sections<sup>11</sup>, depletion<sup>4, 12-14</sup>, and spatial biology (IBEX)<sup>20,21</sup>. The Ultra-LEAF™ purified antibody (Endotoxin &lt; 0.01 EU/µg, Azide-Free, 0.2 µm filtered) is recommended for <i>in vivo</i> studies or highly sensitive assays (Cat. No. 127632, 127649, 127650, 127661 and 127662).</p>

### Application References

1. Fleming TJ, *et al.* 1993. *J. Immunol.* 151:2399. (FC)
2. Daley JM, *et al.* 2008. *J. Leukocyte Biol.* 83:1. (FC)
3. Dietlin TA, *et al.* 2007. *J. Leukocyte Biol.* 81:1205. (FC)

4. Daley J, *et al.* 2007. *J. Leukocyte Biol.* doi:10.1189. (Deplete) [PubMed](#)
5. Tadagavadi RK, *et al.* 2010. *J. Immunol.* 185:4904. [PubMed](#)
6. Sumagin R, *et al.* 2010. *J. Immunol.* 185:7057. [PubMed](#)
7. Guiducci C, *et al.* 2010. *J. Exp Med.* 207:2931. [PubMed](#)
8. Fujita M, *et al.* 2011. *Cancer Res.* 71:2664. [PubMed](#)
9. Van Leeuwen, *et al.* 2008. *Arterioscler. Thromb. Vasc. Biol.* 28:84. (IHC)
10. Kowanetz M, *et al.* 2010. *P. Natl. Acad. Sci. USA* 107:21248. [supplementary data] (IHC)
11. Esbona K, *et al.* 2016. *Breast Cancer Res.* 18:35. (IHC)
12. Wojtasiak M, *et al.* 2010. *J. Gen. Virol.* 91:2158. (FC, Deplete)
13. Jaeger BN, *et al.* 2012. *J. Exp. Med.* 209:565. (Deplete)
14. Wozniak KL, *et al.* 2012. *BMC Immunol.* 13:65 (FC, Deplete)
15. Ribechini E, *et al.* 2009. *Eur. J. Immunol.* 39:3538.
16. Ng LG, *et al.* 2011. *J Invest. Dermatol.* 131:2058. [PubMed](#)
17. Ma C, *et al.* 2012. *J. Leukoc. Biol.* 92:1199.
18. McCartney-Francis, N, *et al.* 2014. *J Leukoc. Biol.* 96:917. [PubMed](#)
19. Her Z, *et al.* 2014. *EMBO Mol. Med.* 7:24. [PubMed](#)
20. Radtke AJ, *et al.* 2020. *Proc Natl Acad Sci U S A.* 117:33455-65. (SB) [PubMed](#)
21. Radtke AJ, *et al.* 2022. *Nat Protoc.* 17:378-401. (SB) [PubMed](#)

## Product Citations

1. Gittens B, *et al.* 2017. *J Immunol.* 10.4049/jimmunol.1600709. [PubMed](#)
2. Linde N, *et al.* 2018. *Nat Commun.* 9:21. [PubMed](#)
3. Shavit Stein E, *et al.* 2018. *Neural Plast.* 2018:7692182. [PubMed](#)
4. McCreedy DA *et al.* 2018. *eNeuro.* 5(4) pii: ENEURO. [PubMed](#)
5. Ding L *et al.* 2018. *Cell reports.* 25(11):2972-2980. [PubMed](#)
6. Teo TH, *et al.* 2018. *Nat Commun.* 9:3905. [PubMed](#)
7. Sadtler K, *et al.* 2017. *Tissue Eng Part A.* 23:1044. [PubMed](#)
8. Goldstein JM *et al.* 2019. *Cell reports.* 27(4):1254-1264. [PubMed](#)
9. Abe H, *et al.* 2019. *Nat Commun.* 10:2824. [PubMed](#)
10. Hou X, *et al.* 2020. *Cell Reports.* 28(1):172-189.e7.. [PubMed](#)
11. Jung J, *et al.* 2019. *Cell Host Microbe.* 25:513. [PubMed](#)
12. Deniset JF *et al.* 2019. *Immunity.* 51(1):131-140. [PubMed](#)
13. Varol D *et al.* 2017. *Immunity.* 46(6):1030-1044. [PubMed](#)
14. Mishra BB, *et al.* 2017. *Nat Microbiol.* 2:17072. [PubMed](#)
15. Davis FM, *et al.* 2019. *Arterioscler Thromb Vasc Biol.* 39:2353. [PubMed](#)
16. Yamada KJ, *et al.* 2020. *PLoS Pathog.* 16:e1008354. [PubMed](#)
17. Fukushima K, *et al.* 2020. *Immunity.* 52(3):542-556. [PubMed](#)
18. Hooftman A, *et al.* 2020. *Cell Metabolism.* 32(3):468-478. [PubMed](#)
19. Gibbons M, *et al.* 2011. *Am J Respir Crit Care Med.* 184:569. [PubMed](#)
20. Yan J, *et al.* 2012. *J Immunol.* 188:2316. [PubMed](#)
21. Avila M, *et al.* 2012. *Innate Immunity.* 18:648. [PubMed](#)
22. Hickey A, *et al.* 2013. *Infect Immun.* 81:2123. [PubMed](#)
23. Dorward D, *et al.* 2013. *J Leukoc Biol.* 94:193. [PubMed](#)
24. Kim K, *et al.* 2014. *Proc Natl Acad Sci U S A.* 111:11774. [PubMed](#)
25. Her Z, *et al.* 2015. *EMBO Mol Med.* 7:24. [PubMed](#)
26. Zhang L, *et al.* 2015. *J Immunol.* 194:5423. [PubMed](#)
27. Herz J, *et al.* 2015. *J Exp Med.* 212: 1153 - 1169. [PubMed](#)
28. Mylonas K, *et al.* 2015. *Immunobiology.* 220: 924-933. [PubMed](#)
29. Teo T, *et al.* 2015. *J Virol.* 89: 7955-7969. [PubMed](#)
30. Calderon B, *et al.* 2015. *J Exp Med.* 212: 1497-1512. [PubMed](#)
31. Bodogai M, *et al.* 2015. *Cancer Res.* 75: 3456-3465. [PubMed](#)
32. Cardona S, *et al.* 2015. *ASN Neuro.* 7: 1759091415608204. [PubMed](#)
33. Huang W, *et al.* 2015. *J Allergy Clin Immunol.* [PubMed](#)
34. Wang B, *et al.* 2015. *Sci Rep.* 5: 17695. [PubMed](#)
35. Chew W, *et al.* 2016. *Nat Methods.* 13: 868-874. [PubMed](#)
36. Weng L, *et al.* 2016. *Sci Rep.* 6:38632. [PubMed](#)
37. Wessel AW, *et al.* 2020. *Nat Commun.* 4.123611111. [PubMed](#)
38. Myers DR, *et al.* 2020. *Front Immunol.* 11:576310. [PubMed](#)
39. Neupane AS, *et al.* 2020. *Cell.* 183(1):110-125.e11. [PubMed](#)
40. Sharma A, *et al.* 2020. *Cell.* 183(2):377-394.e21. [PubMed](#)
41. Shemer A, *et al.* 2020. *Immunity.* 53(5):1033-1049.e7. [PubMed](#)
42. Yilmaz B, *et al.* 2021. *Cell Host Microbe.* 29(4):650-663.e9. [PubMed](#)
43. Kumari P, *et al.* 2021. *Cell Reports.* 35(3):109012. [PubMed](#)
44. Barkaway A, *et al.* 2021. *Immunity.* [PubMed](#)

## RRID

AB\_1877212 (BioLegend Cat. No. 127611)  
 AB\_2251161 (BioLegend Cat. No. 127612)

## Antigen Details

---

<b>Structure</b>	A 21-35 kD GPI-anchored membrane protein
<b>Distribution</b>	Expressed on the majority of myeloid cells in bone marrow and peripheral granulocytes. The monoclonal antibody RB6-8C5 recognizes both Ly-6G and Ly-6C.
<b>Cell Type</b>	Granulocytes, Macrophages, Monocytes

**Biology Area** Immunology, Innate Immunity  
**Antigen References** Fleming TJ, *et al.* 1993. *J. Immunol.* 151:2399.  
**Gene ID** [546644](#)

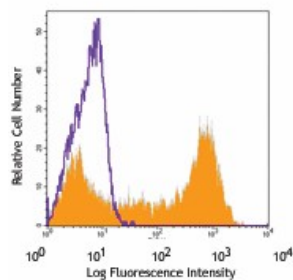
## Related Protocols

[Cell Surface Flow Cytometry Staining Protocol](#)

## Other Formats

Alexa Fluor® 594 anti-mouse Ly-6G, Purified anti-mouse Ly-6G, Biotin anti-mouse Ly-6G, FITC anti-mouse Ly-6G, PE anti-mouse Ly-6G, Alexa Fluor® 647 anti-mouse Ly-6G, Pacific Blue™ anti-mouse Ly-6G, APC anti-mouse Ly-6G, PerCP/Cyanine5.5 anti-mouse Ly-6G, PE/Cyanine7 anti-mouse Ly-6G, Alexa Fluor® 700 anti-mouse Ly-6G, APC/Cyanine7 anti-mouse Ly-6G, Alexa Fluor® 488 anti-mouse Ly-6G, Brilliant Violet 421™ anti-mouse Ly-6G, Brilliant Violet 570™ anti-mouse Ly-6G, Ultra-LEAF™ Purified anti-mouse Ly-6G, Brilliant Violet 510™ anti-mouse Ly-6G, Purified anti-mouse Ly-6G (Maxpar® Ready), Brilliant Violet 650™ anti-mouse Ly-6G, Brilliant Violet 711™ anti-mouse Ly-6G, Brilliant Violet 605™ anti-mouse Ly-6G, Brilliant Violet 785™ anti-mouse Ly-6G, PE/Dazzle™ 594 anti-mouse Ly-6G, APC/Fire™ 750 anti-mouse Ly-6G, PerCP anti-mouse Ly-6G, TotalSeq™-A0015 anti-mouse Ly-6G, TotalSeq™-C0015 anti-mouse Ly-6G, TotalSeq™-B0015 anti-mouse Ly-6G, Spark Blue™ 550 anti-mouse Ly-6G, Spark NIR™ 685 anti-mouse Ly-6G, Spark YG™ 593 anti-mouse Ly-6G, PE/Cyanine5 anti-mouse Ly-6G, PE/Fire™ 810 anti-mouse Ly-6G Antibody, Spark UV™ 387 anti-mouse Ly-6G, PE/Fire™ 640 anti-mouse Ly-6G

## Product Data



C57BL/6 bone marrow cells stained with 1A8 Pacific Blue™

For research use only. Not for diagnostic use. Not for resale. BioLegend will not be held responsible for patent infringement or other violations that may occur with the use of our products.

\*These products may be covered by one or more Limited Use Label Licenses (see the BioLegend Catalog or our website, [www.biolegend.com/ordering#license](http://www.biolegend.com/ordering#license)). BioLegend products may not be transferred to third parties, resold, modified for resale, or used to manufacture commercial products, reverse engineer functionally similar materials, or to provide a service to third parties without written approval of BioLegend. By use of these products you accept the terms and conditions of all applicable Limited Use Label Licenses. Unless otherwise indicated, these products are for research use only and are not intended for human or animal diagnostic, therapeutic or commercial use.

BioLegend Inc., 8999 BioLegend Way, San Diego, CA 92121 [www.biolegend.com](http://www.biolegend.com)  
Toll-Free Phone: 1-877-Bio-Legend (246-5343) Phone: (858) 768-5800 Fax: (877) 455-9587