

Alexa Fluor® 488 anti-human Cadherin 11 Antibody

Catalog# / Size	368712 / 100 µg
Clone	16G5
Regulatory Status	RUO
Other Names	OSF-4, Osteoblast cadherin, OB-cadherin, CDH11, CDHOB, CAD11
Isotype	Mouse IgG1, κ
Description	Cadherins are calcium-dependent cell adhesion proteins. They preferentially interact with themselves in a homophilic manner in connecting cells. Cadherin 11 is a type I transmembrane glycoprotein. It is a type II (atypical) cadherin, based on its lack of a HAV cell adhesion recognition sequence that is specific to type I cadherins. The expression of this particular cadherin in osteoblastic cell lines along with its upregulation during differentiation suggests a specific function in bone development and maintenance. This cadherin is also expressed in some cancer cells.

Product Details

Verified Reactivity	Human
Antibody Type	Monoclonal
Host Species	Mouse
Immunogen	Recombinant protein containing the extracellular cadherin domain 1 of Cadherin 11 fused to maltose binding protein.
Formulation	Phosphate-buffered solution, pH 7.2, containing 0.09% sodium azide and BSA (origin USA)
Preparation	The antibody was purified by affinity chromatography and conjugated with Alexa Fluor® 488 under optimal conditions.
Concentration	0.5 mg/ml
Storage & Handling	The antibody solution should be stored undiluted between 2°C and 8°C, and protected from prolonged exposure to light. Do not freeze.
Application	IHC-P - Quality tested
Recommended Usage	<p>Each lot of this antibody is quality control tested by formalin-fixed paraffin-embedded immunohistochemical staining. For immunohistochemistry, a concentration range of 5.0 - 10 µg/ml is suggested. It is recommended that the reagent be titrated for optimal performance for each application.</p> <p>* Alexa Fluor® 488 has a maximum emission of 519 nm when it is excited at 488 nm.</p> <p>Alexa Fluor® and Pacific Blue™ are trademarks of Life Technologies Corporation.</p> <p>View full statement regarding label licenses</p>
Excitation Laser	Blue Laser (488 nm)
Application Notes	Additional reported applications (for the relevant formats) include: immunoprecipitation.
RRID	AB_2686939 (BioLegend Cat. No. 368712)

Antigen Details

Structure	Type I single pass transmembrane glycoprotein.
Distribution	Osteoblasts, neuroblasts, and some cancer cells.

Function	Cell adhesion.
Interaction	Cadherin 2 (CDH2).
Ligand/Receptor	Calcium.
Cell Type	Osteoclasts
Biology Area	Cell Adhesion, Cell Biology, Immunology, Neuroscience, Synaptic Biology
Molecular Family	Adhesion Molecules
Antigen References	<ol style="list-style-type: none"> 1. Wheelock MJ, Johnson KR. 2003. <i>Annu. Rev. Cell Dev. Biol.</i> 19:207-35. 2. Christofori G, <i>et al.</i> 2003. <i>EMBO. J.</i> 22:2318. 3. Okazaki M, <i>et al.</i> 1994. <i>J. Biol. Chem.</i> 269:12092.
Gene ID	1009

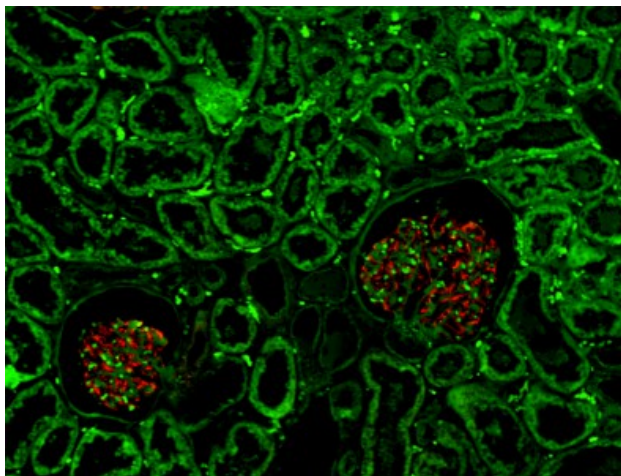
Related Protocols

[Cell Surface Flow Cytometry Staining Protocol](#)

Other Formats

Purified anti-human Cadherin 11, APC anti-human Cadherin 11, PE anti-human Cadherin 11, PE/Cyanine7 anti-human Cadherin 11, Alexa Fluor® 488 anti-human Cadherin 11, Alexa Fluor® 647 anti-human Cadherin 11, TotalSeq™-C0131 anti-human Cadherin 11

Product Data



Human paraffin-embedded kidney tissue slices were prepared with a standard protocol of deparaffination and rehydration. Antigen retrieval was done with BioLegend's Tris-Buffered Saline 1X (1.0M, pH 7.4) at 95°C for 40 minutes. The tissue was washed with PBS/ 0.05% Tween 20 twice for five minutes, permeabilized with 0.5% Triton X-100 for ten minutes, and blocked with 5% FBS and 0.2% gelatin for 30 minutes. Then, the tissue was stained with 10 µg/mL of anti-Cadherin 11 (clone 16G5) Alexa Fluor®488 (green) and anti-Nestin (clone 10C2) Alexa Fluor®647 (red) at 4°C overnight. This image was captured with a 10X objective.

For research use only. Not for diagnostic use. Not for resale. BioLegend will not be held responsible for patent infringement or other violations that may occur with the use of our products.

*These products may be covered by one or more Limited Use Label Licenses (see the BioLegend Catalog or our website, www.biolegend.com/ordering#license). BioLegend products may not be transferred to third parties, resold, modified for resale, or used to manufacture commercial products, reverse engineer functionally similar materials, or to provide a service to third parties without written approval of BioLegend. By use of these products you accept the terms and conditions of all applicable Limited Use Label Licenses. Unless otherwise indicated, these products are for research use only and are not intended for human or animal diagnostic, therapeutic or commercial use.

BioLegend Inc., 8999 BioLegend Way, San Diego, CA 92121 www.biolegend.com
Toll-Free Phone: 1-877-Bio-Legend (246-5343) Phone: (858) 768-5800 Fax: (877) 455-9587