

## Western-Ready™ ECL Substrate Plus Kit

<b>Catalog# / Size</b>	426315 / 20 mL 426316 / 200 mL 426317 / 500 mL
<b>Regulatory Status</b>	RUO
<b>Description</b>	Western-Ready™ ECL Substrate Plus Kit is a sensitive non-radioactive, enhanced luminol-based chemiluminescent substrate (ECL) for the detection of horseradish peroxidase (HRP) in immunoblotting and other immunoassay applications. The ECL substrate detects picogram amounts of antigen with stable light output (up to 4 hours), which can be visualized using X-ray films or CCD-based imagers.

### Product Details

---

<b>Formulation</b>	Proprietary
<b>Preparation</b>	To prepare working solution, mix equal volumes of Western-Ready™ ECL Substrate Plus Solution A with Western-Ready™ ECL Substrate Plus Solution B. Add 0.1 mL of working solution per cm <sup>2</sup> of membrane, and uniformly distribute over the entire membrane surface.
<b>Storage &amp; Handling</b>	Ambient room temperature
<b>Application</b>	<a href="#">WB - Quality tested</a> <a href="#">ELISA - Verified</a>
<b>Application Notes</b>	BioLegend offers two luminol-based enhanced chemiluminescent substrate solution packages for the detection of horseradish peroxidase on immunoblots and ELISA plates: Western-Ready™ ECL Substrate Plus Kit and Western-Ready™ ECL Substrate Premium Kit. The Western-Ready™ ECL Substrate Plus Kit detects mid- to low- picogram levels of antigen, while the Western-Ready™ ECL Substrate Premium Kit detects high femtogram levels of antigen and is suitable for applications where more sensitive detection is required.
<b>Additional Product Notes</b>	20 mL size (Cat. No. 426315) contains 10 mL each of solution A and solution B.  200 mL size (Cat. No. 426316) contains 100 mL each of solution A and solution B.  500 mL size (Cat. No. 426317) contains 250 mL each of solution A and solution B.

### Antigen Details

---

<b>Gene ID</b>	NA
----------------	----

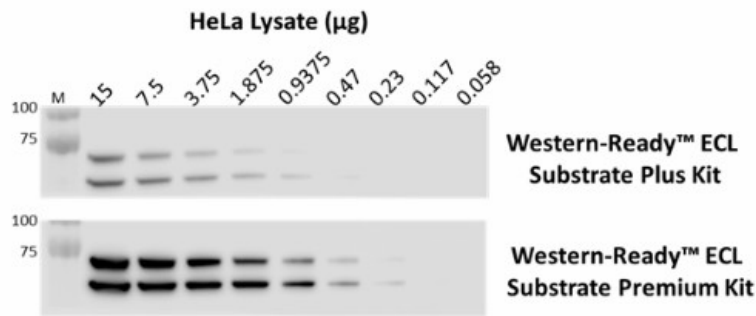
### Related Protocols

---

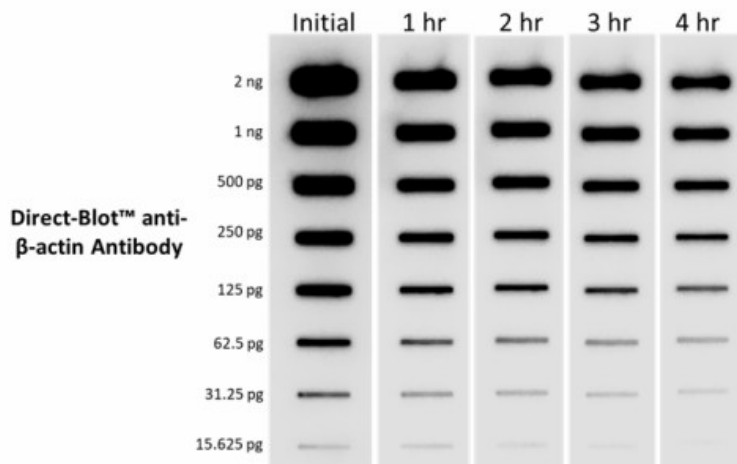
[Western Blotting Protocol](#)

### Product Data

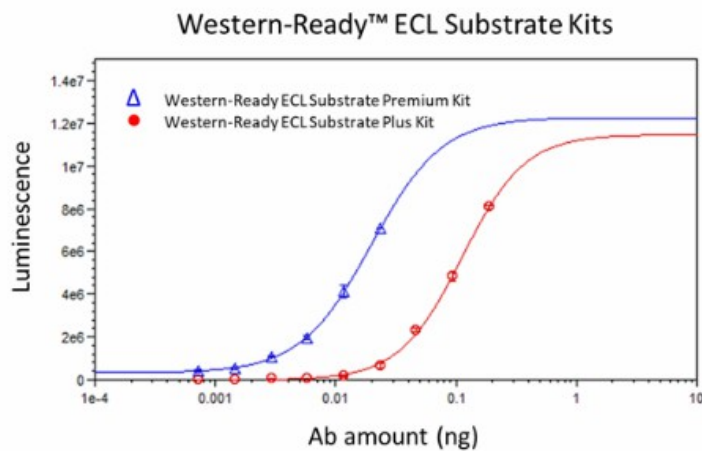
---



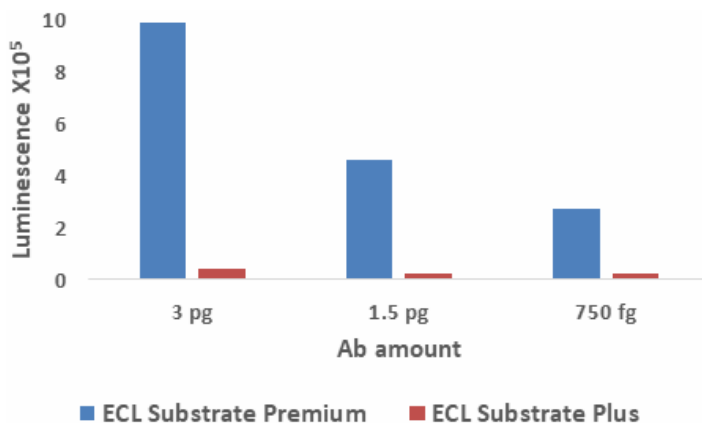
**Western blot analysis using Western-Ready™ ECL Substrate Plus and Premium Kits:** The indicated amounts of whole cell extracts from HeLa cells were resolved by 4-12% Bis-Tris gel electrophoresis, transferred to a nitrocellulose membrane, and probed with 0.1 µg/mL (1:5000 dilution) of purified anti-Lamin A/C antibody (clone WL4G10) (Cat. No. 600002) overnight at 4°C. Proteins were visualized by chemiluminescence detection using HRP goat anti-mouse IgG antibody (Cat. No. 405306) at a 1:3000 dilution, followed by incubation with Western-Ready™ ECL Substrate Plus Kit or Western-Ready™ ECL Substrate Premium Kit.



**Slot-blot analysis of Western-Ready™ ECL Substrate Plus Kit:** The indicated amount of Direct-Blot™ HRP anti-β-actin antibody (Cat. No. 643807) was immobilized on a nitrocellulose membrane and incubated with Western-Ready™ ECL Substrate Plus Kit prior to chemiluminescent detection at the indicated time points.



**ELISA analysis using Western-Ready™ ECL Substrate Plus and Premium Kits:** The indicated amounts of purified anti-SSRP1 antibody (clone 10D1) (Cat. No. 609702) were captured by anti-mouse FC-coated 96-well plates for 1 hour at room temperature. Bound antibody was detected with HRP goat anti-mouse IgG antibody (Cat. No. 405306) using either Western-Ready™ ECL Substrate Premium Kit (Cat. No. 426319) (blue triangles) or Western-Ready™ ECL Substrate Plus Kit (red circles). Shown values represent the average signal of three technical replicates after background subtraction.



**ELISA analysis using Western-Ready™ ECL Substrate Plus and Premium Kits:** Bar graph representation of low picogram to high femtogram values shown in panel C.

For research use only. Not for diagnostic use. Not for resale. BioLegend will not be held responsible for patent infringement or other violations that may occur with the use of our products.

\*These products may be covered by one or more Limited Use Label Licenses (see the BioLegend Catalog or our website, [www.biolegend.com/ordering#license](http://www.biolegend.com/ordering#license)). BioLegend products may not be transferred to third parties, resold, modified for resale, or used to manufacture commercial products, reverse engineer functionally similar materials, or to provide a service to third parties without written approval of BioLegend. By use of these products you accept the terms and conditions of all applicable Limited Use Label Licenses. Unless otherwise indicated, these products are for research use only and are not intended for human or animal diagnostic, therapeutic or commercial use.

BioLegend Inc., 8999 BioLegend Way, San Diego, CA 92121 [www.biolegend.com](http://www.biolegend.com)  
Toll-Free Phone: 1-877-Bio-Legend (246-5343) Phone: (858) 768-5800 Fax: (877) 455-9587