

Alexa Fluor® 488 anti-Tubulin- α Antibody

Catalog# / Size	627905 / 25 μ g 627906 / 100 μ g
Clone	10D8
Regulatory Status	RUO
Other Names	α -tubulin, Tubulin, alpha-ubiquitous chain
Isotype	Mouse IgM, κ
Description	Tubulin, one of the major constituents of microtubules, is a dimeric protein consisting of an alpha and beta chain. Tubulin is a highly conserved protein that is ubiquitously expressed. Tubulin is a GTP-binding protein that can be modified by phosphorylation and acetylation. Tubulin interacts with a variety of proteins including RAC GTPase activating protein 1, ZAP70, Polo-like kinase, c-Myc, Fyn, and microtubule associated protein 1A. The 10D8 antibody recognizes α -tubulin in all species and is useful for Western blotting, and immunofluorescence staining. The 10D8 antibody can also be used to monitor protein loading in Western blotting.

Product Details

Verified Reactivity	Human, Mouse, Rat, All Species
Antibody Type	Monoclonal
Host Species	Mouse
Immunogen	Recombinant full length human α -tubulin
Formulation	This antibody is provided in phosphate-buffered solution, pH 7.4, containing 0.09% sodium azide at 0.5 mg/ml.
Preparation	The antibody was purified by affinity chromatography and conjugated with Alexa Fluor® 488 under optimal conditions.
Concentration	0.5 mg/mL
Storage & Handling	The antibody solution should be stored undiluted between 2°C and 8°C, and protected from prolonged exposure to light. Do not freeze.
Application	ICC - Quality tested
Recommended Usage	<p>Each lot of this antibody is quality control tested by immunocytochemistry. For immunocytochemistry, a concentration range of 1.0 - 4.0 μg/mL is recommended. It is recommended that the reagent be titrated for optimal performance for each application.</p> <p>* Alexa Fluor® 488 has a maximum emission of 519 nm when it is excited at 488 nm.</p> <p>Alexa Fluor® and Pacific Blue™ are trademarks of Life Technologies Corporation.</p> <p>View full statement regarding label licenses</p>
Excitation Laser	Blue Laser (488 nm)
Application References	1. Chou HYE, <i>et al.</i> 2006. <i>J. Biol. Chem.</i> 281:15201.
(PubMed link indicates BioLegend citation)	
RRID	AB_893643 (BioLegend Cat. No. 627905) AB_893642 (BioLegend Cat. No. 627906)

Antigen Details

Structure	Tubulin family, tubulin is a dimeric protein consisting of an alpha and beta chain. Alpha tubulin has an approximate molecular weight of 50-55 kD.
Distribution	Ubiquitous
Function	Tubulin is one of the major constituents of microtubules. Binds GTP, alpha chain contains a non-exchangeable GTP binding site
Interaction	RAC GTPase activating protein 1, ZAP70, Polo-like kinase, c-Myc, Fyn, Microtubule associated protein 1A
Modification	Phosphorylation, acetylation
Biology Area	Cell Biology, Cell Motility/Cytoskeleton/Structure, Neuroscience, Neuroscience Cell Markers
Molecular Family	Microtubules
Antigen References	<ol style="list-style-type: none"> 1. Cowan NJ, <i>et al.</i> 1983. <i>Mol. Cell. Biol.</i> 3:1738. 2. Miller FD, <i>et al.</i> 1987. <i>J. Cell Biol.</i> 105:3065. 3. Wilde CD, <i>et al.</i> 1982. <i>Proc. Natl. Acad. Sci. USA</i> 79:96.
Gene ID	84790

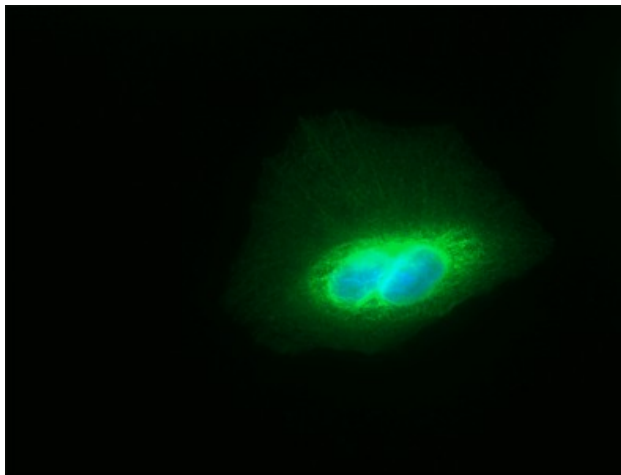
Related Protocols

[Immunocytochemistry Staining Protocol](#)

Other Formats

Purified anti-Tubulin- α , Alexa Fluor® 488 anti-Tubulin- α , Alexa Fluor® 647 anti-Tubulin- α , Alexa Fluor® 594 anti-Tubulin- α

Product Data



HeLa cells were fixed with 1% paraformaldehyde (PFA) for ten minutes, permeabilized with 0.5% Triton X-100 for ten minutes, and blocked with 5% FBS for 30 minutes. Then the cells were intracellularly stained with 1 μ g/ml of Alexa Fluor® 488 anti-Tubulin- α (clone 10D8) antibody (green) in 5% FBS for two hours in room temperature. Nuclei were counterstained with DAPI (blue). The image was captured with 60X objective.

For research use only. Not for diagnostic use. Not for resale. BioLegend will not be held responsible for patent infringement or other violations that may occur with the use of our products.

*These products may be covered by one or more Limited Use Label Licenses (see the BioLegend Catalog or our website, www.biolegend.com/ordering#license). BioLegend products may not be transferred to third parties, resold, modified for resale, or used to manufacture commercial products, reverse engineer functionally similar materials, or to provide a service to third parties without written approval of BioLegend. By use of these products you accept the terms and conditions of all applicable Limited Use Label Licenses. Unless otherwise indicated, these products are for research use only and are not intended for human or animal diagnostic, therapeutic or commercial use.

BioLegend Inc., 8999 BioLegend Way, San Diego, CA 92121 www.biolegend.com
 Toll-Free Phone: 1-877-Bio-Legend (246-5343) Phone: (858) 768-5800 Fax: (877) 455-9587

