

Purified anti-human CD354 (TREM-1) Antibody

Catalog# / Size	314902 / 100 µg
Clone	TREM-26
Regulatory Status	RUO
Workshop	HCDM listed
Other Names	Triggering receptor expressed on myeloid cells 1, triggering receptor expressed on monocytes 1
Isotype	Mouse IgG1, κ
Description	TREM-1 is a 30 kD glycoprotein also known as triggering receptor expressed on myeloid cells 1, and triggering receptor expressed on monocytes 1. It is a Type I membrane protein that contains an immunoglobulin-like V-type domain. Alternatively spliced protein variant may be secreted. TREM-1 is highly expressed on peripheral blood myeloid cells (particularly mature monocytes and granulocytes); TREM-1 expression can be further upregulated by bacteria, fungi and lipopolysaccharide. TREM-1 has been shown to interact with the adaptor protein DAP12 to stimulate neutrophil and monocyte-mediated inflammatory responses through the triggering and release of pro-inflammatory cytokines and chemokines. TREM-1 is thought to amplify inflammatory responses to fungal and bacterial infections and potentiate septic shock. This antibody has been shown to be useful for flow cytometry and activation of monocytes and granulocytes.

Product Details

Verified Reactivity	Human
Reported Reactivity	African Green, Baboon, Cynomolgus, Rhesus
Antibody Type	Monoclonal
Host Species	Mouse
Immunogen	Recombinant human TREM-1
Formulation	Phosphate-buffered solution, pH 7.2, containing 0.09% sodium azide.
Preparation	The antibody was purified by affinity chromatography.
Concentration	0.5 mg/ml
Storage & Handling	The antibody solution should be stored undiluted between 2°C and 8°C.
Application	FC - Quality tested WB - Verified
Recommended Usage	Each lot of this antibody is quality control tested by immunofluorescent staining with flow cytometric analysis . For flow cytometric staining, the suggested use of this reagent is ≤0.5 µg per million cells in 100 µl volume. It is recommended that the reagent be titrated for optimal performance for each application.
Application Notes	ELISA Detection: The biotinylated TREM-26 antibody is useful as a detection antibody for a TREM-1 specific sandwich ELISA, when used in conjunction with the TREM-37 antibody (Cat. No. 316102) as the capture antibody. The TREM-26 antibody is useful for flow cytometry and activation of monocytes and granulocytes. The Ultra-LEAF™ purified antibody (Endotoxin < 0.01 EU/µg, Azide-Free, 0.2 µm filtered) is recommended for functional assays (Cat. No. 314913 & 314914).
Application References (PubMed link indicates BioLegend citation)	1. Li J, <i>et al.</i> 2011. <i>Dev. Comp. Immunol.</i> epub.
Product Citations	1. Dutertre CA, <i>et al.</i> 2020. <i>Immunity.</i> 51(3):573-589.e8.. PubMed

RRID

AB_389213 (BioLegend Cat. No. 314902)

Antigen Details

Structure	Type I membrane protein, 30 kD, contains immunoglobulin-like V-type domain. Alternatively spliced variant may be secreted.
Distribution	Highly expressed in adult liver, lung, and spleen, lower expression in lymph node, placenta, spinal cord, and heart. High expression in peripheral blood myeloid cells.
Function	Stimulates neutrophil and monocyte-mediated inflammatory responses through the triggering and release of pro-inflammatory cytokines and chemokines and the upregulation of surface activation markers. Amplifies inflammatory responses to fungal and bacterial
Interaction	DAP12
Modification	Glycosylated
Cell Type	Neutrophils
Biology Area	Cell Biology, Immunology, Innate Immunity, Neuroinflammation, Neuroscience
Molecular Family	CD Molecules, Cytokines/Chemokines
Antigen References	1. Bouchon A, <i>et al.</i> 2001. <i>Nature</i> 410:1103. 2. Bouchon A, <i>et al.</i> 2000. <i>J. Immunol.</i> 164:4991. 3. Gingras MC, <i>et al.</i> 2002. <i>Mol. Immunol.</i> 38:817.
Regulation	Upregulated by bacteria, fungi, and LPS
Gene ID	54210

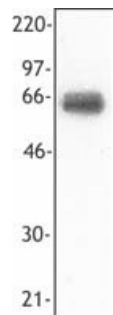
Related Protocols

[Cell Surface Flow Cytometry Staining Protocol](#)

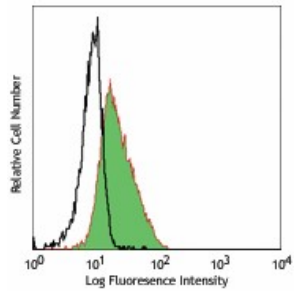
Other Formats

Purified anti-human CD354 (TREM-1), Biotin anti-human CD354 (TREM-1), PE anti-human CD354 (TREM-1), APC anti-human CD354 (TREM-1), Ultra-LEAF™ Purified anti-human CD354 (TREM-1), TotalSeq™-A0586 anti-human CD354 (TREM-1), TotalSeq™-C0586 anti-human CD354 (TREM-1) Antibody

Product Data



Recombinant human TREM-1 Fc protein (20 ng per lane) was resolved by electrophoresis, transferred to nitrocellulose, and probed monoclonal antibody against TREM-1 (clone TREM-26). Proteins were visualized using a goat anti-mouse secondary conjugated to HRP and a chemiluminescence detection system.



Recombinant human TREM-1 Fc protein (20 ng per lane) was resolved by electrophoresis, transferred to nitrocellulose, and probed monoclonal antibody against TREM-1 (clone TREM-26). Proteins were visualized using a goat anti-mouse secondary conjugated to HRP and a chemiluminescence detection system.

For research use only. Not for diagnostic use. Not for resale. BioLegend will not be held responsible for patent infringement or other violations that may occur with the use of our products.

*These products may be covered by one or more Limited Use Label Licenses (see the BioLegend Catalog or our website, www.biolegend.com/ordering#license). BioLegend products may not be transferred to third parties, resold, modified for resale, or used to manufacture commercial products, reverse engineer functionally similar materials, or to provide a service to third parties without written approval of BioLegend. By use of these products you accept the terms and conditions of all applicable Limited Use Label Licenses. Unless otherwise indicated, these products are for research use only and are not intended for human or animal diagnostic, therapeutic or commercial use.

BioLegend Inc., 8999 BioLegend Way, San Diego, CA 92121 www.biolegend.com
Toll-Free Phone: 1-877-Bio-Legend (246-5343) Phone: (858) 768-5800 Fax: (877) 455-9587