

PE/Cyanine7 anti-human CD11b (activated) Antibody

Catalog# / Size	301411 / 25 tests 301412 / 100 tests
Clone	CBRM1/5
Regulatory Status	RUO
Other Names	Integrin α_M chain, C3biR, CR3, Mac-1, Mo1, ITGAM
Isotype	Mouse IgG1, κ
Description	The CBRM1/5 antibody reacts with an activated form of human CD11b, a 165-170 kD type I transmembrane glycoprotein also known as α_M integrin, Mac-1, CR3, and C3biR. CD11b non-covalently associates with integrin β_2 (CD18) and is expressed on granulocytes, monocytes/macrophages, dendritic cells, NK cells, and subsets of T and B cells. CD11b/CD18 is critical for the transendothelial migration of monocytes and neutrophils as well as adhesion, phagocytosis, and neutrophil activation. CD11b/CD18 interacts with ICAM-1 (CD54), ICAM-2 (CD102), ICAM-4, CD14, CD23, heparin, iC3b, fibrinogen and factor X.

Product Details

Verified Reactivity	Human
Antibody Type	Monoclonal
Host Species	Mouse
Formulation	Phosphate-buffered solution, pH 7.2, containing 0.09% sodium azide and BSA (origin USA)
Preparation	The antibody was purified by affinity chromatography and conjugated with PE/Cyanine7 under optimal conditions.
Concentration	Lot-specific (to obtain lot-specific concentration, please enter the lot number in our Concentration and Expiration Lookup or Certificate of Analysis online tools.)
Storage & Handling	The antibody solution should be stored undiluted between 2°C and 8°C, and protected from prolonged exposure to light. Do not freeze.
Application	FC - Quality tested
Recommended Usage	Each lot of this antibody is quality control tested by immunofluorescent staining with flow cytometric analysis . For flow cytometric staining, the suggested use of this reagent is 5 μ l per million cells in 100 μ l staining volume or 5 μ l per 100 μ l of whole blood.
Excitation Laser	Blue Laser (488 nm) Green Laser (532 nm)/Yellow-Green Laser (561 nm)
Application Notes	The CBRM1/5 antibody recognizes a subset of CD11b molecules on neutrophils and monocytes activated with chemoattractants or phorbol-esters. This antibody does not recognize "non-activated" CD11b. The epitope recognized by CBRM1/5 is contained in the I domain of the α chain. Clone CBRM1/5 binds the I domain, close to the ligand binding site. It recognizes a conformational change of the integrin ⁹ . Additional reported applications (for the relevant formats) include: immunoprecipitation, and blocking cell adhesion to fibrinogen and ICAM-1 ¹ . The CBRM1/5 antibody binds specifically to the activated form of CD11b. The LEAF™ purified antibody (Endotoxin <0.1 EU/ μ g, Azide-Free, 0.2 μ m filtered) is recommended for functional assays (Cat. No. 301408).
Additional Product Notes	BioLegend is in the process of converting the name PE/Cy7 to PE/Cyanine7. The dye molecule remains the same, so you should expect the same quality and performance from our PE/Cyanine7 products. Please contact Technical Service if you have any questions.
Application References	1. Diamond M, <i>et al.</i> 1993. <i>J. Cell Biol.</i> 120:545. (Block) 2. Bryn T, <i>et al.</i> 2006. <i>J. Immunol.</i> 176:7361. PubMed 3. Sithu SD, <i>et al.</i> 2007. <i>J. Biol. Chem.</i> doi:10.1074/jbc.M611273200.
(PubMed link indicates BioLegend citation)	

4. Barthel SR, *et al.* 2006. *Am J. Respir Cell Mol Biol.* 35:378. [PubMed](#)
5. Pillay J, *et al.* 2010. *J. Leukocyte Biol.* 88:211. [PubMed](#)
6. Wilson RP, *et al.* 2011. *Infect Immun.* 79:830. [PubMed](#)
7. Koleva RI, *et al.* 2012. *Blood.* 119:4878. [PubMed](#)
8. Eleftherious D, *et al.* 2012. *Neurology.* 79:2089. [PubMed](#)
9. Oxvig C, *et al.* 1999. *Proc. Natl. Acad. Sci. USA* 96:2215.
10. Muller-Edenborn B, *et al.* 2014. *Br J Anaesth.* [PubMed](#)
11. Cash JL, *et al.* 2013. *EMBO Rep.* 14:999. (FC) [PubMed](#)

Product Citations

1. Zheng QY, *et al.* 2019. *Front Immunol.* 10:1866. [PubMed](#)

RRID

AB_2563571 (BioLegend Cat. No. 301411)
 AB_2563572 (BioLegend Cat. No. 301412)

Antigen Details

Structure	Integrin, type I transmembrane glycoprotein, associates with integrin β_2 (CD18), 165-170 kD
Distribution	Granulocytes, monocytes/macrophages, dendritic cells, NK cells, T cell subset, B cell subset
Function	Adhesion, phagocytosis, chemotaxis, neutrophil activation
Ligand/Receptor	ICAM-1 (CD54), ICAM-2 (CD102), ICAM-4, CD14, CD23, heparin, iC3b, fibrinogen, factor X
Cell Type	B cells, Dendritic cells, Granulocytes, Macrophages, Monocytes, NK cells, T cells, Tregs
Biology Area	Cell Adhesion, Cell Biology, Immunology, Innate Immunity, Neuroscience, Neuroscience Cell Markers, Costimulatory Molecules
Molecular Family	Adhesion Molecules, CD Molecules
Antigen References	1. Stewart M, <i>et al.</i> 1995. <i>Curr. Opin. Cell Biol.</i> 7:690. 2. Petty H, <i>et al.</i> 1996. <i>Immunol. Today</i> 17:209.
Gene ID	3684

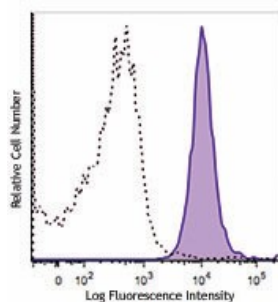
Related Protocols

[Cell Surface Flow Cytometry Staining Protocol](#)

Other Formats

PE/Cyanine7 anti-human CD11b (activated), FITC anti-human CD11b (activated), PE anti-human CD11b (activated), Purified anti-human CD11b (activated), APC anti-human CD11b (activated), Alexa Fluor® 647 anti-human CD11b (activated), APC/Fire™ 750 anti-human CD11b (activated), PerCP/Cyanine5.5 anti-human CD11b (activated), Biotin anti-human CD11b (activated), PE/Dazzle™ 594 anti-human CD11b (activated), Ultra-LEAF™ Purified anti-human CD11b (activated)

Product Data



PMA-activated (5 minutes) human peripheral blood granulocytes were stained with CD11b (clone CBRM1/5) PE/Cyanine7 (filled histogram) or mouse IgG1, κ PE/Cyanine7 isotype control (open histogram).

For research use only. Not for diagnostic use. Not for resale. BioLegend will not be held responsible for patent infringement or other violations that may occur with the use of our products.

*These products may be covered by one or more Limited Use Label Licenses (see the BioLegend Catalog or our website, www.biolegend.com/ordering#license). BioLegend products may not be transferred to third parties, resold, modified for resale, or used to manufacture commercial products, reverse engineer functionally similar materials, or to provide a service to third parties without written approval of BioLegend. By use of these products you accept the terms and conditions of all applicable Limited Use Label Licenses. Unless otherwise indicated, these products are for research use only and are not intended for human or animal diagnostic, therapeutic or commercial use.

BioLegend Inc., 8999 BioLegend Way, San Diego, CA 92121 www.biolegend.com
Toll-Free Phone: 1-877-Bio-Legend (246-5343) Phone: (858) 768-5800 Fax: (877) 455-9587