

Biotin anti- α -Synuclein, aggregated Antibody

Catalog# / Size	865105 / 25 μ g 865106 / 100 μ g
Clone	A17183G
Regulatory Status	RUO
Other Names	Non-A beta component of AD amyloid, NACP, PARK1, Synuclein alpha-140, non-A4 component of amyloid, alpha-synuclein, isoform NACP140, non-amyloid beta component (NAP)
Isotype	Rat IgG1, κ
Description	Alpha-synuclein is expressed principally in the nervous system, but it is also produced in the other tissues, including the skin. In the brain, the protein is primarily neuronal, but it is also present in glia. Neuronal α -synuclein is concentrated in the presynaptic nerve terminals, interacts with plasma membrane phospholipids, and is also present in the nuclei and mitochondria. At least three isoforms of synuclein are produced through alternative splicing. The most common isoform is a 140 amino acid-long transcript. Other isoforms are α -synuclein-126, lacking residues 41-54; and α -synuclein-112, which lacks residues 103-130. Alpha-synuclein's physiological role is poorly understood, but the protein has been implicated in regulating dopamine release and transport, synaptic vesicle clustering, and functioning as a SNARE-complex chaperone. Alpha-synuclein fibrils are a major component of the intracellular Lewy bodies that are associated with Parkinson's disease, Lewy body dementia, and multiple system atrophy.

Product Details

Verified Reactivity	Human
Antibody Type	Monoclonal
Host Species	Rat
Immunogen	Aggregated recombinant human α -synuclein.
Formulation	Phosphate-buffered solution, pH 7.2, containing 0.09% sodium azide
Preparation	The antibody was purified by affinity chromatography and conjugated with biotin under optimal conditions.
Concentration	0.5 mg/mL
Storage & Handling	The antibody solution should be stored undiluted between 2°C and 8°C. Do not freeze.
Application	IHC-P - Quality tested
Recommended Usage	Each lot of this antibody is quality control tested by formalin-fixed paraffin-embedded immunohistochemical staining. For immunohistochemistry, a concentration range of 0.5 - 10 μ g/mL is suggested. It is recommended that the reagent be titrated for optimal performance for each application.
RRID	AB_2861091 (BioLegend Cat. No. 865105) AB_2861092 (BioLegend Cat. No. 865106)

Antigen Details

Structure	Human α -synuclein is a 140 amino acid protein with a molecular mass of 14 kD.
Distribution	Tissue distribution: Primarily nervous system, but lower expression in other tissues such as blood and skin. Cellular distribution: Cytoskeleton, cytosol, lysosome, mitochondria, nucleus, plasma membrane, and extracellular.

Function	α -synuclein plays several roles in synaptic activity such as synaptic vesicle trafficking and neurotransmitter release. It is also involved in the regulation of gene expression.
Interaction	Interacts with various proteins, such as UCHL1, phospholipase D, histones and SNARE components.
Cell Type	Neurons
Biology Area	Cell Biology, Mitochondrial Function, Neurodegeneration, Neuroinflammation, Neuroscience, Protein Misfolding and Aggregation, Protein Trafficking and Clearance, Synaptic Biology
Molecular Family	α -Synuclein, Presynaptic proteins, Synaptic Vesicle Trafficking/Endocytosis
Antigen References	<ol style="list-style-type: none"> 1. Mor DE, et al. 2016. <i>Neurobiol. Dis.</i> 88:66. 2. Jucker M, Walker LC. 2013. <i>Nature.</i> 501(7465):45. 3. Bartels T, et al. 2011. <i>Nature.</i> 477(7362):107. 4. Devine MJ, et al. 2011. <i>Mov. Disord.</i> 26:2160.
Gene ID	6622

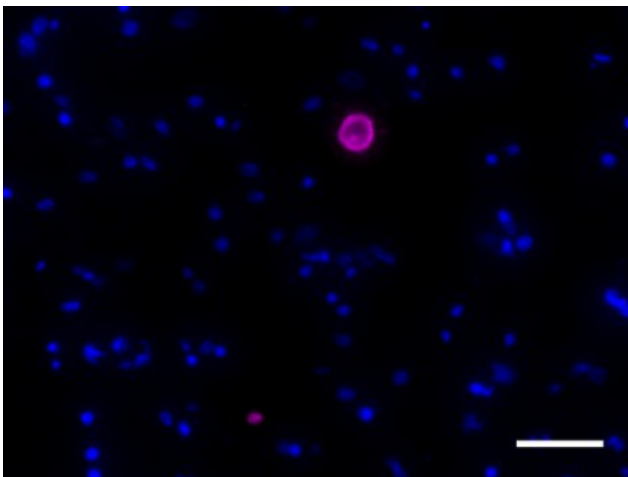
Related Protocols

[Immunohistochemistry Protocol for Paraffin-Embedded Sections](#)

Other Formats

Purified anti- α -Synuclein, aggregated, HRP anti- α -Synuclein, aggregated, Biotin anti- α -Synuclein, aggregated

Product Data



IHC staining of biotin anti- α -Synuclein, aggregated antibody (clone A17183G) on formalin-fixed paraffin-embedded Parkinson's disease brain tissue. Following antigen retrieval using Sodium Citrate H.I.E.R., the tissue was incubated with 0.5 μ g/mL of the primary antibody overnight at 4°C, followed by incubation with Alexa Fluor® 647 streptavidin (Cat. No. 405237) for one hour at room temperature. Nuclei were counterstained with DAPI. The image was captured with a 40X objective. Scale bar: 50 μ m

For research use only. Not for diagnostic use. Not for resale. BioLegend will not be held responsible for patent infringement or other violations that may occur with the use of our products.

*These products may be covered by one or more Limited Use Label Licenses (see the BioLegend Catalog or our website, www.biolegend.com/ordering#license). BioLegend products may not be transferred to third parties, resold, modified for resale, or used to manufacture commercial products, reverse engineer functionally similar materials, or to provide a service to third parties without written approval of BioLegend. By use of these products you accept the terms and conditions of all applicable Limited Use Label Licenses. Unless otherwise indicated, these products are for research use only and are not intended for human or animal diagnostic, therapeutic or commercial use.

BioLegend Inc., 8999 BioLegend Way, San Diego, CA 92121 www.biolegend.com
Toll-Free Phone: 1-877-Bio-Legend (246-5343) Phone: (858) 768-5800 Fax: (877) 455-9587