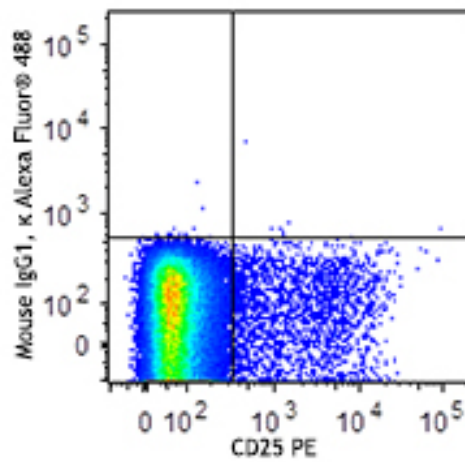
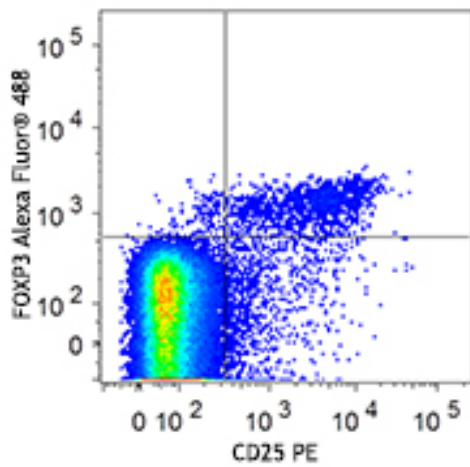
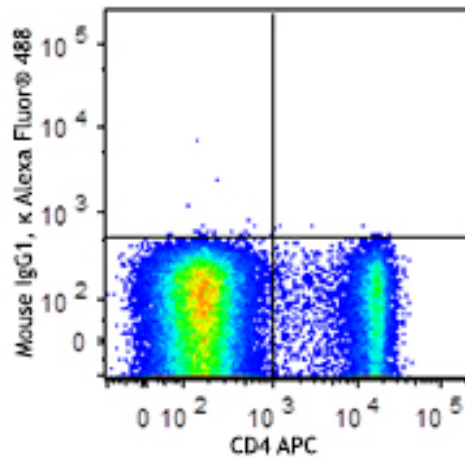
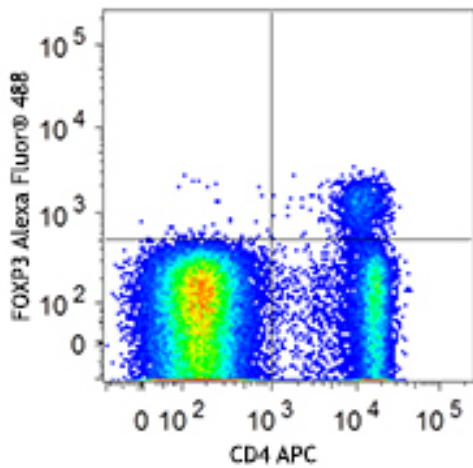


**True-Nuclear™ Mouse Treg Flow™ Kit (FOXP3 Alexa Fluor®
488/CD4 APC/CD25 PE)**



BALB/c mouse splenocytes were stained with True-Nuclear™ Mouse Treg Flow™ Kit (FOXP3 Alexa Fluor® 488/CD4 APC/CD25 PE)