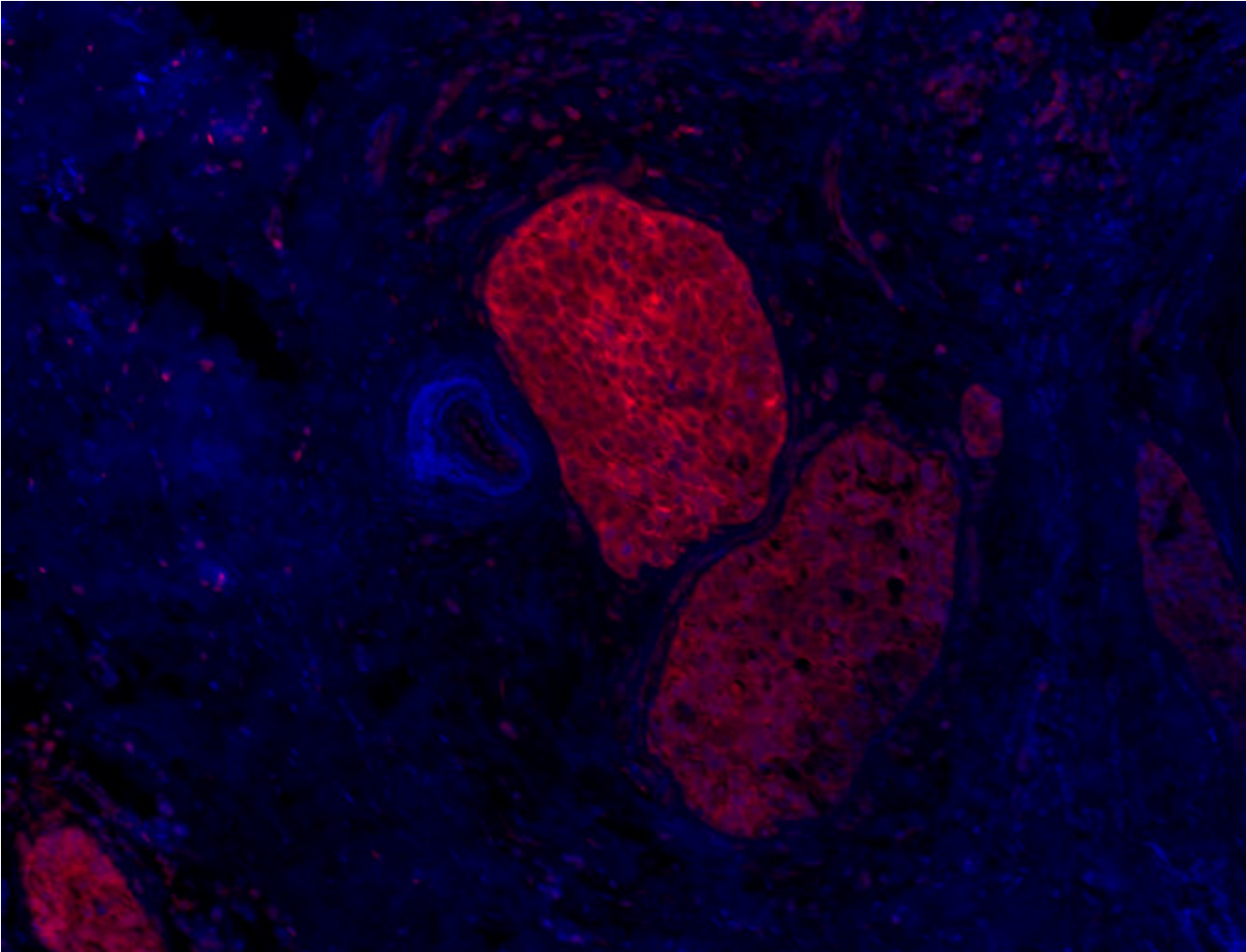


**Alexa Fluor<sup>®</sup> 594 anti-human CD106 Antibody**



Human paraffin-embedded breast cancer tissue slices were prepared with a standard protocol of deparaffinization and rehydration. Antigen retrieval was done with Tris-Buffered Saline 1X (1.0M, pH 7.4) at 95°C for 40 minutes. Tissue was washed with PBS/0.05% Tween 20 twice for five minutes, permeated with 0.5% TritonX-100 for ten minutes and blocked with 5% FBS and 0.2% gelatin for 30 minutes. Then, the tissue was stained with 10 µg/ml of Alexa Fluor<sup>®</sup> 594 anti-CD106 antibody (red) at 4°C overnight. The nuclei were counter-stained with DAPI (blue). The image was captured with a 10X objective.