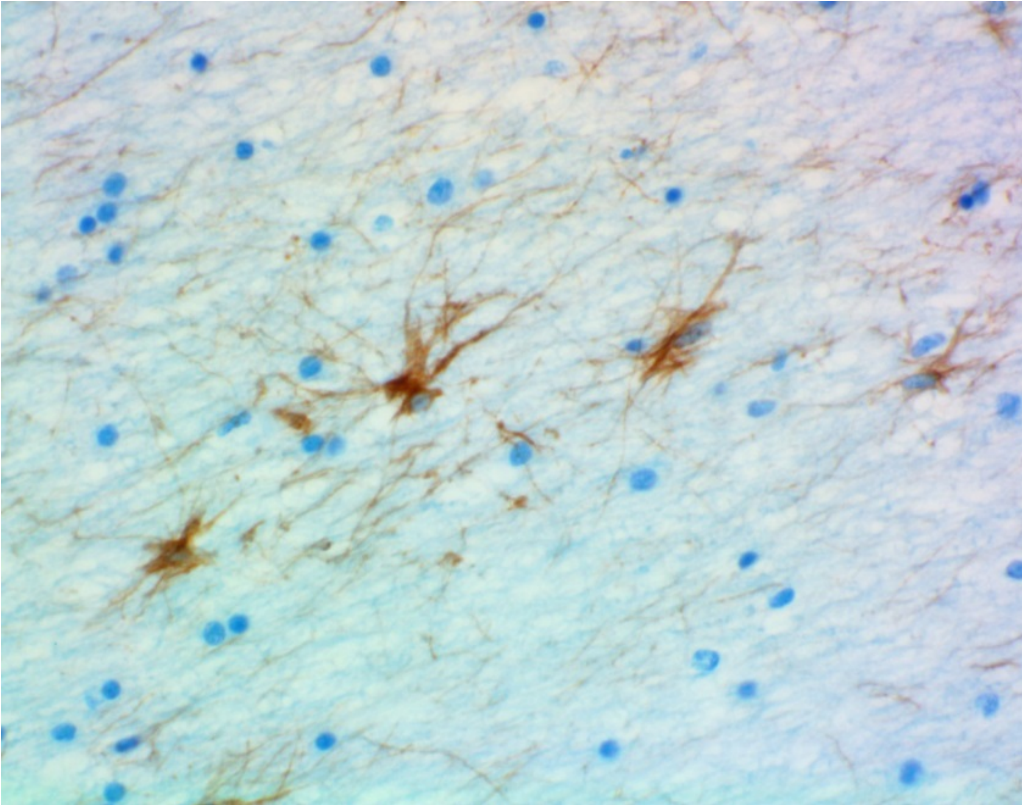


## **HRP anti-GFAP Antibody**



IHC staining of HRP anti-GFAP Antibody (Clone SMI 25) on formalin-fixed paraffin-embedded human cerebellum brain tissue. After antigen retrieval using Retrieve-All Antigen Unmasking System 3 (927801), the tissue was incubated with the primary antibody at 5 µg/mL for one hour at room temperature. DAB was used for detection followed by hematoxylin and Bluing solution counterstaining.