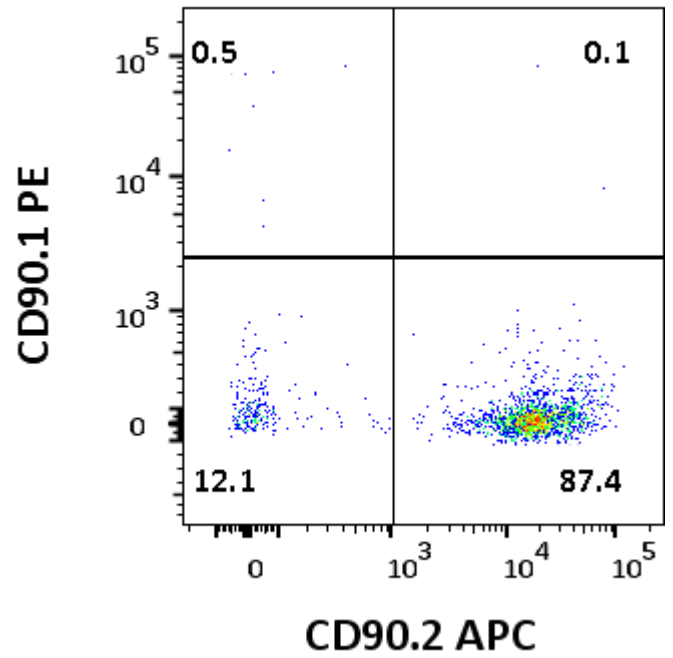
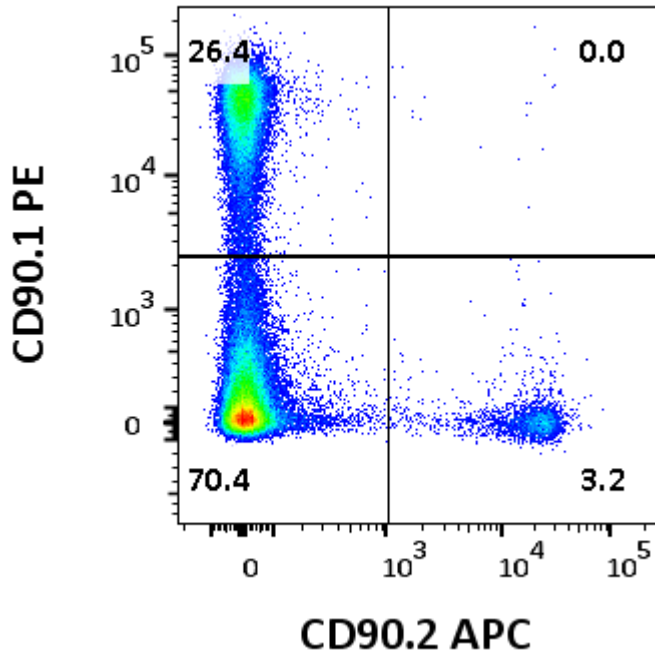


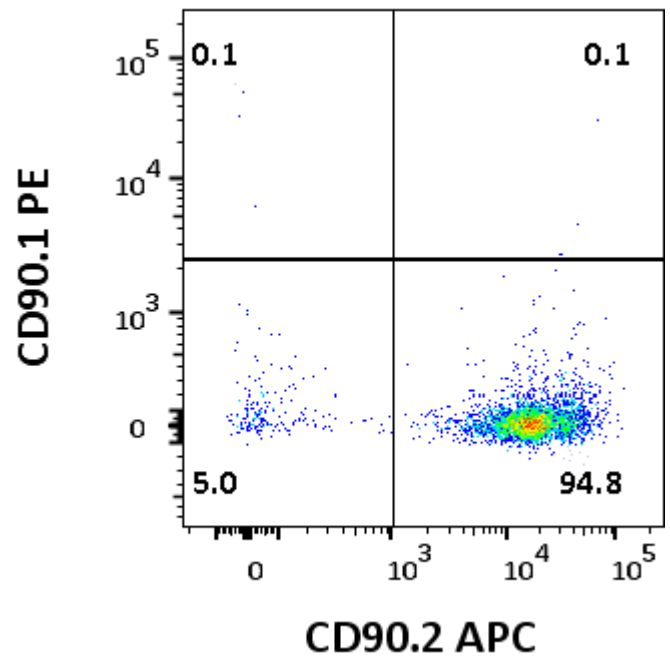
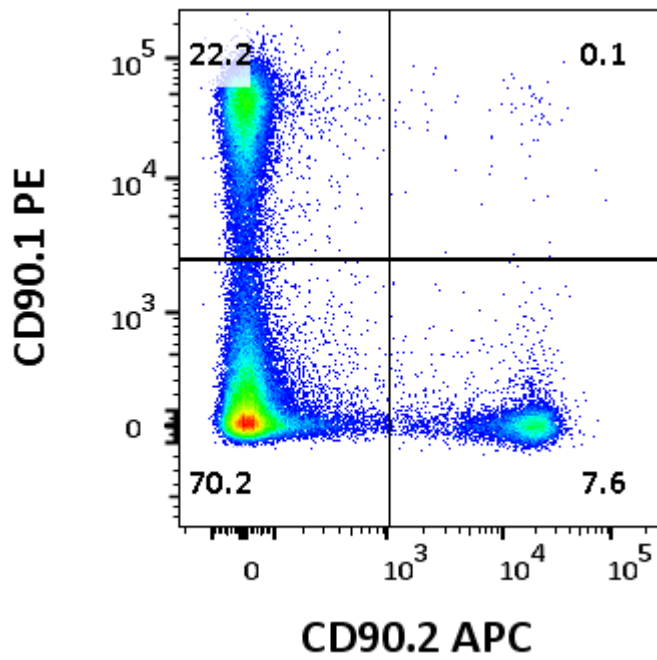
Before Isolation

After MojoSort™ Isolation

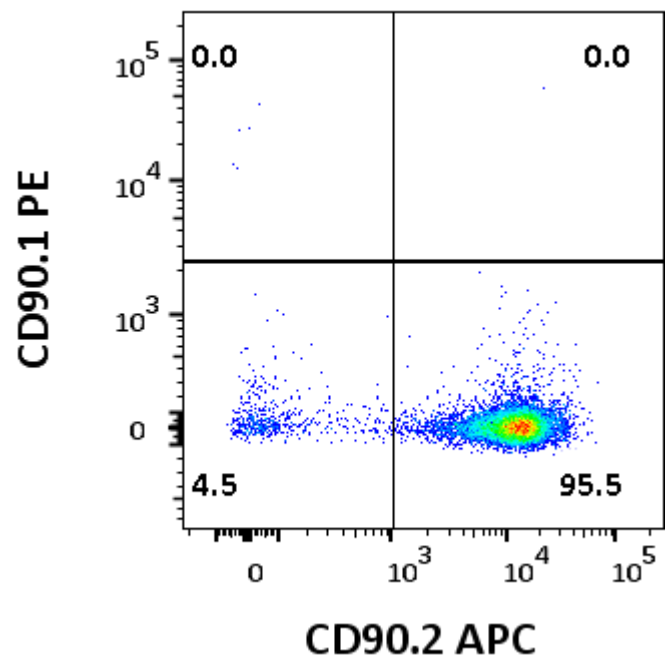
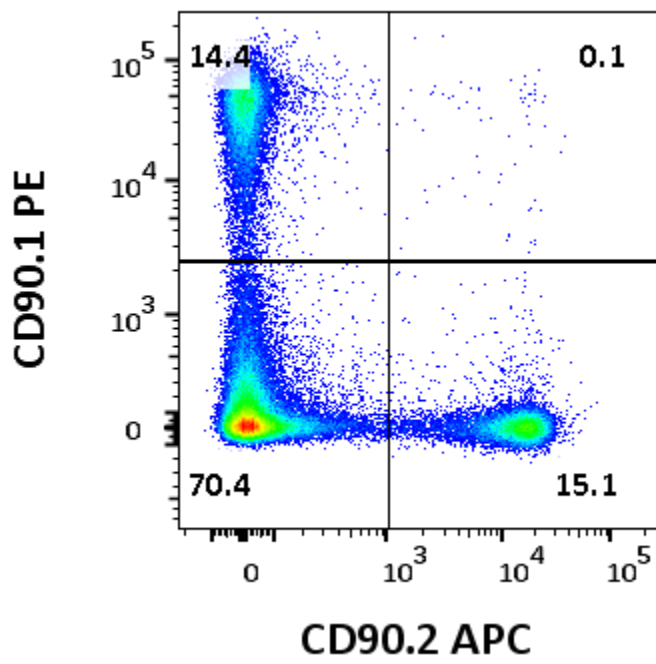
A)



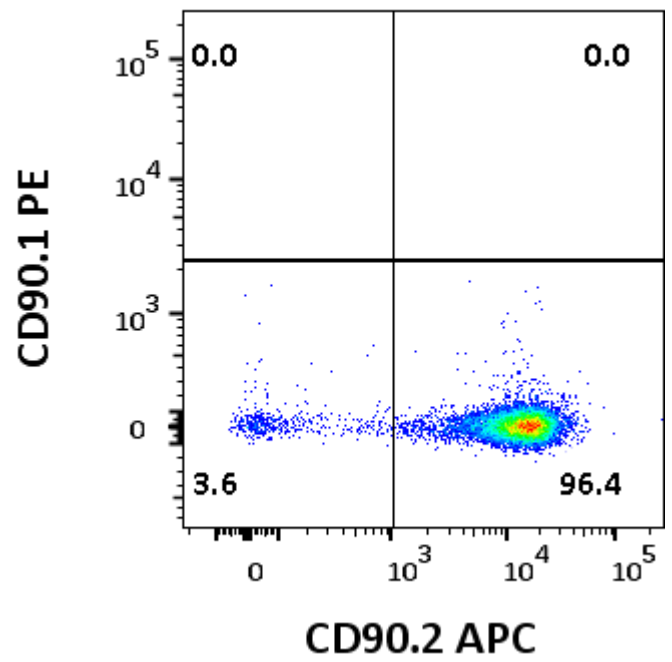
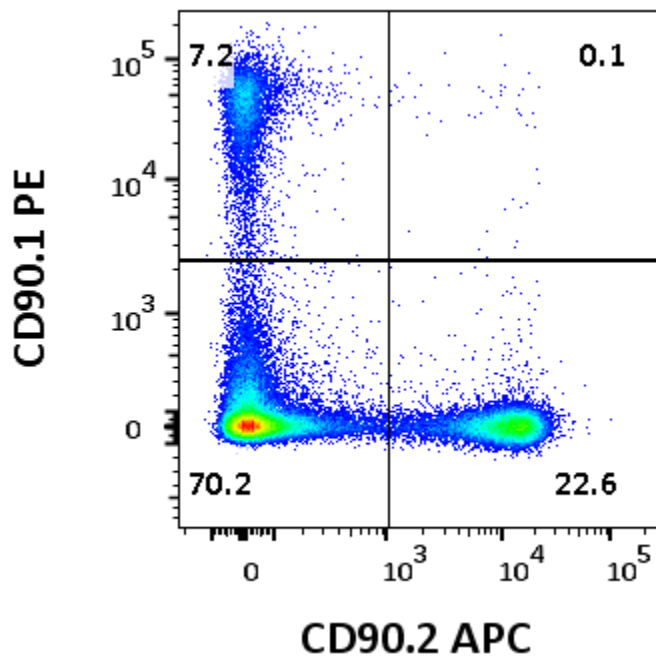
B)



C)



D)



E)

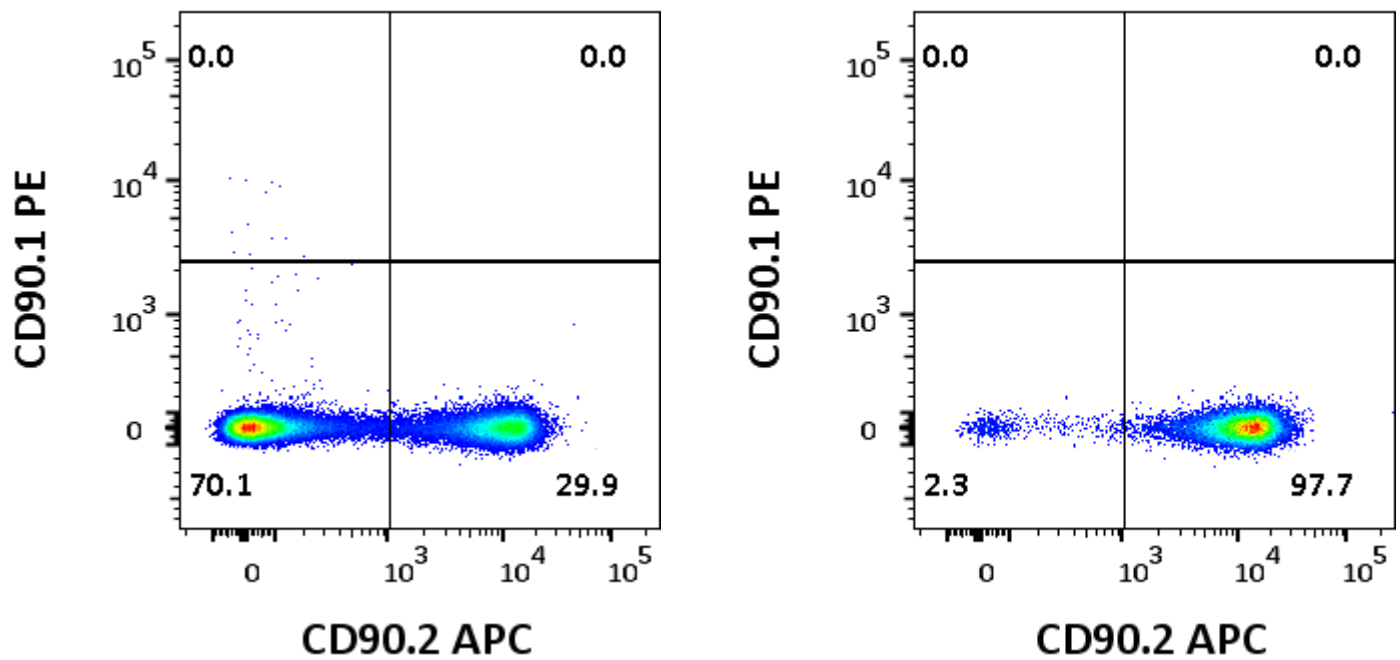


Figure Legend: A single cell suspension with a mixture of different starting percentages of C57BL/6 (CD90.2⁺) and FVB/NJ (CD90.1⁺) splenocytes was prepared for positive selection of CD90.2⁺ cells using the MojoSort™ Mouse CD90.2 selection Kit. Cells were stained with anti-mouse CD90.2 (clone 53-2.1) APC and CD90.1 (clone OX-7) PE. Dead cells were excluded by Helix NP™ Blue. Panel A) Mix of approximately 10% C57BL/6 and 90 % FVB/NJ cells. Panel B) Mix of approximately 25% C57BL/6 and 75% FVB/NJ cells. Panel C) Mix of approximately 50% C57/BL/6 and 50% FVB/NJ cells. Panel D) Mix of approximately 75% C57BL/6 and 25% FVB/NJ cells. Panel E) C57BL/6 cells only. **Left plots:** Cells before isolation. **Right plots:** CD90.2⁺ cells after isolation.

X-axis: CD90.2 APC

Y-axis: CD90.1 PE