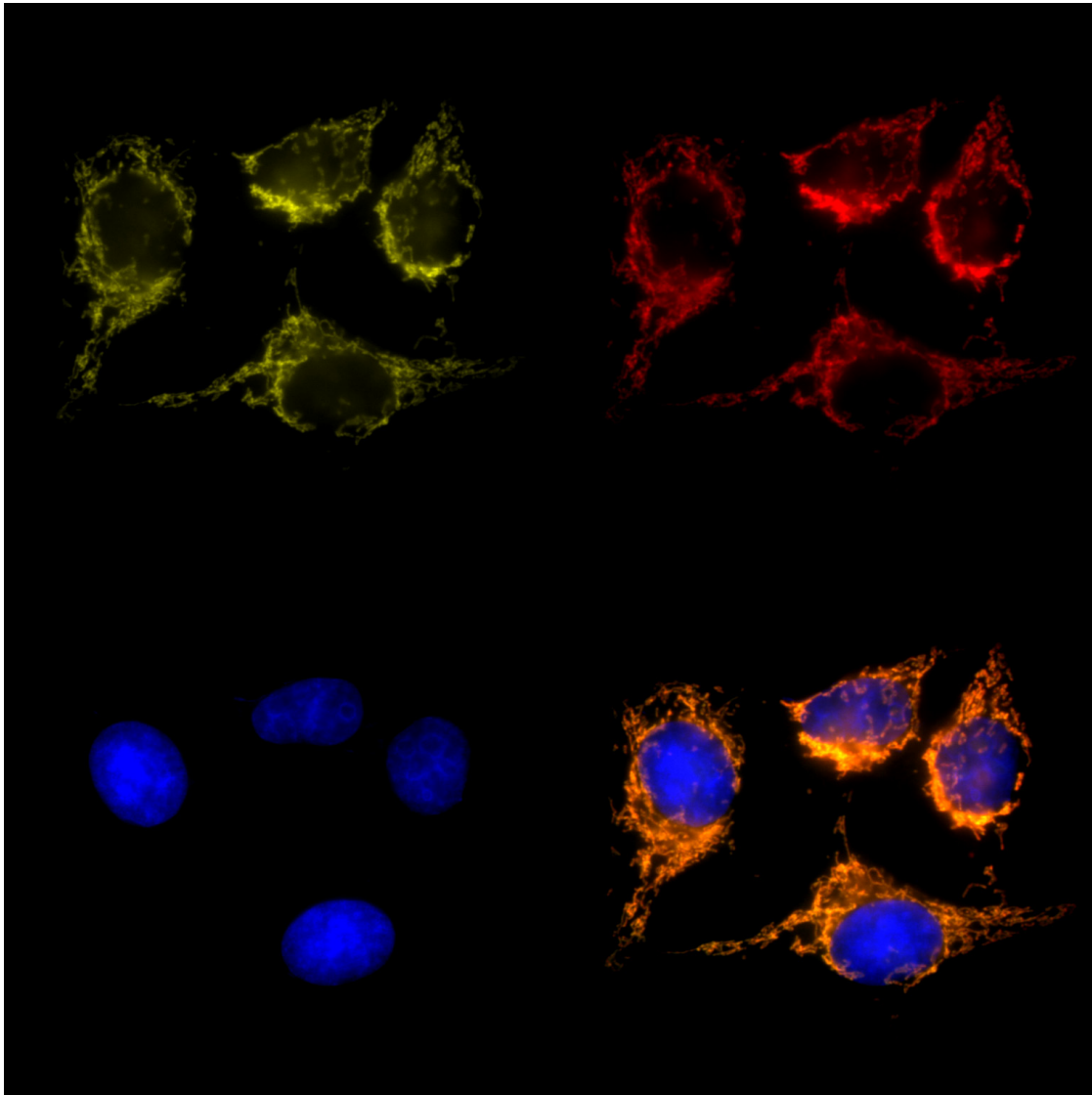


MitoSpy™ Orange CMTMRos



HeLa cells were stained with 250 nM of MitoSpy™ Orange CMTMR (yellow) for 20 minutes, fixed with 4% paraformaldehyde (PFA) for ten minutes, and permeabilized with 0.1% Triton X-100 for ten minutes. Then the cells were stained with anti-Cytochrome C Alexa Fluor® 647 (red) and counterstained with DAPI (blue). All three images were merged in the bottom right panel. The image was captured with a 60x objective.

MitoSpy™ Orange CMTMRos: Chemical Structure

