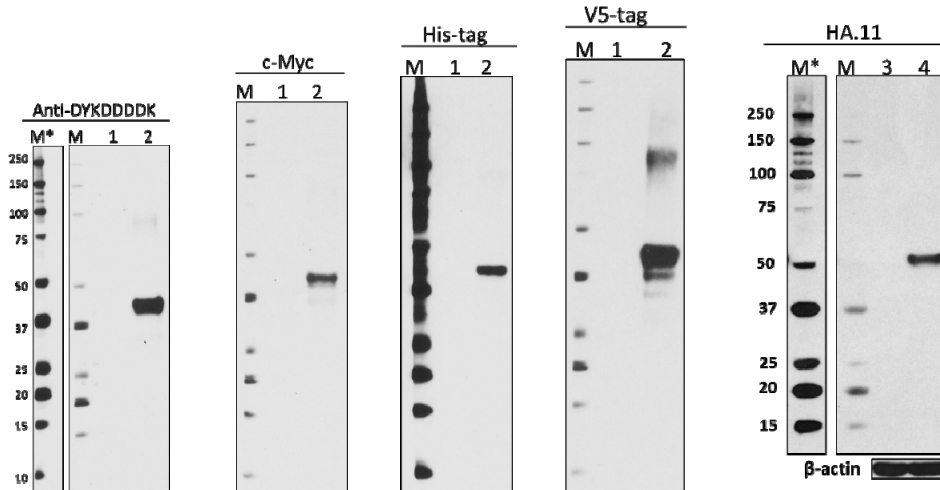


**Epitope Tag Small Motif Antibody Sampler Kit**



50ng recombinant human IFN- $\gamma$  protein (lane 1, negative control) and Posi-Tag Epitope Tag Protein (lane 2) and 15 $\mu$ g each of total protein from CHO cells (lane 3), and CHO transfected with HA tagged protein (lane 4) were resolved by 4-12% Bis-tris gel electrophoresis, transferred to nitrocellulose, and probed with 1  $\mu$ g/mL Purified anti-DYKDDDDK Tag (clone L5) Antibody and Purified anti-HA.11 Epitope Tag (clone 16B12) Antibody, 0.5  $\mu$ g/mL Purified anti-c-Myc (clone 9E10) Antibody, and 0.2  $\mu$ g/mL Purified anti-His Tag (clone J099B12) Antibody and Purified anti-V5-tag (clone 7/4) Antibody. Proteins were visualized using an HRP goat anti-mouse IgG (clone Poly4053) secondary antibody and chemiluminescence detection. Direct-Blot™ HRP anti- $\beta$ -actin (clone 2F1-1) Antibody was used as a loading control. Lane M: MW ladder. Lane M\*: long exposure MW ladder.