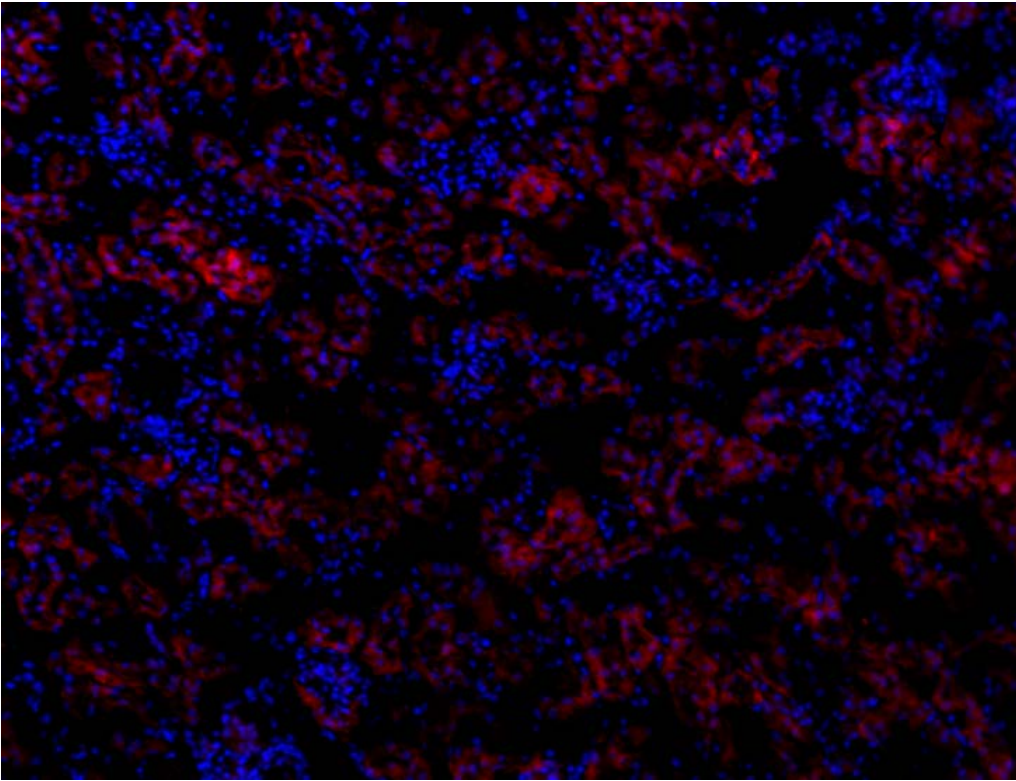


Alexa Fluor[®] 594 anti-mouse CD100 (SEMA4D) Antibody



C57BL/6 mouse frozen kidney section was fixed with 4% paraformaldehyde (PFA) for ten minutes at room temperature and blocked with 5% FBS for 30 minutes at room temperature. Then the section was stained with 10 µg/mL of anti-mouse CD100 (clone BMA-12) Alexa Fluor[®] 594 (red) overnight at 4°C. Nuclei were counterstained with DAPI (blue). The image was captured with a 10X objective.