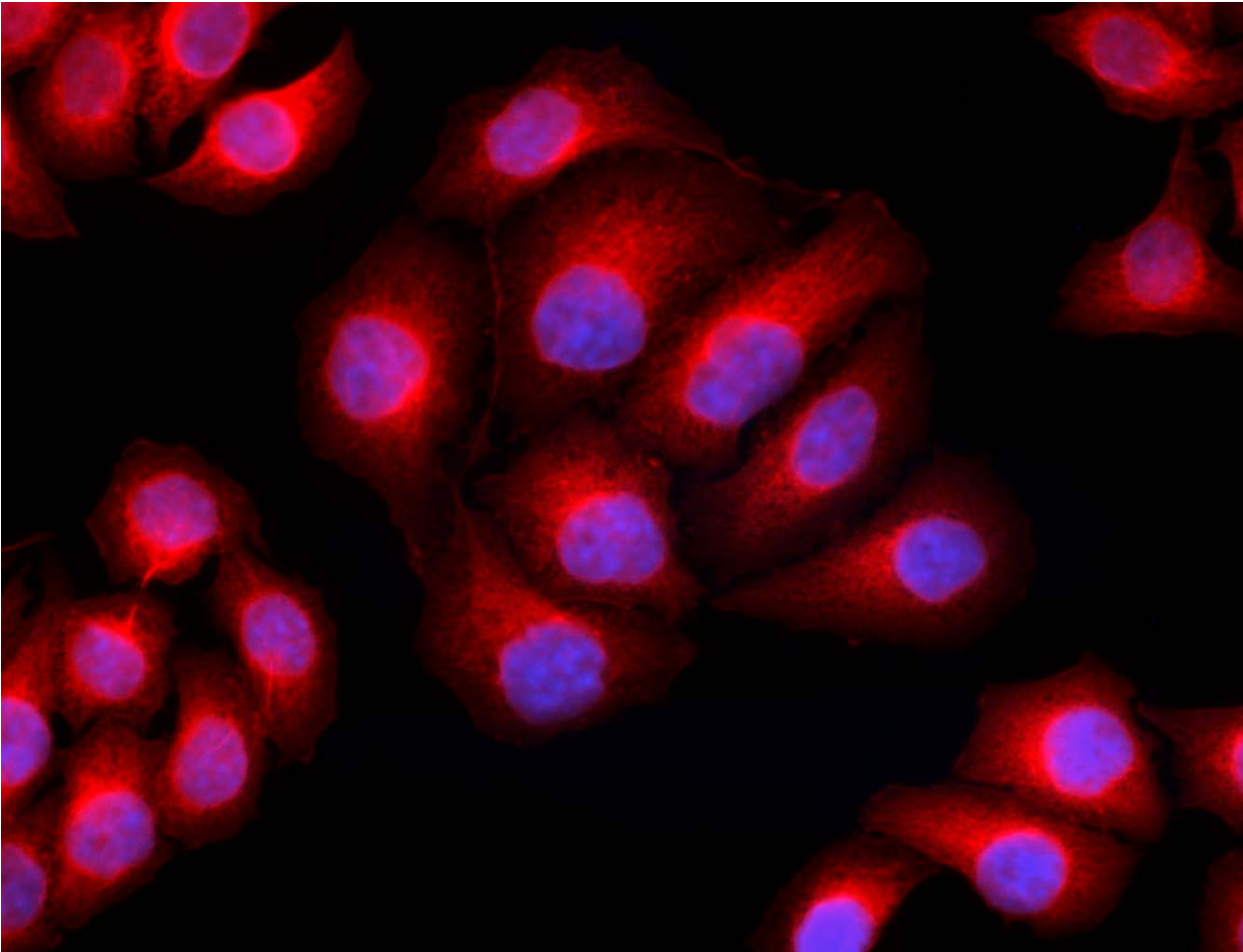


## **Alexa Fluor® 594 anti-Tubulin-alpha Antibody**



HeLa cells were fixed with 1% paraformaldehyde (PFA) for 10 minutes, permeabilized with 0.5% Triton X-100 for 10 minutes and blocked with 5% FBS for 30 minutes. Then the cells were intracellularly stained with 5  $\mu\text{g}/\text{ml}$  anti-human Tubulin-alpha (clone 10D8) Alexa Fluor® 594 (red) in blocking buffer overnight at 4°C. Nuclei were counterstained with DAPI (blue). The image was captured with a 40X objective.