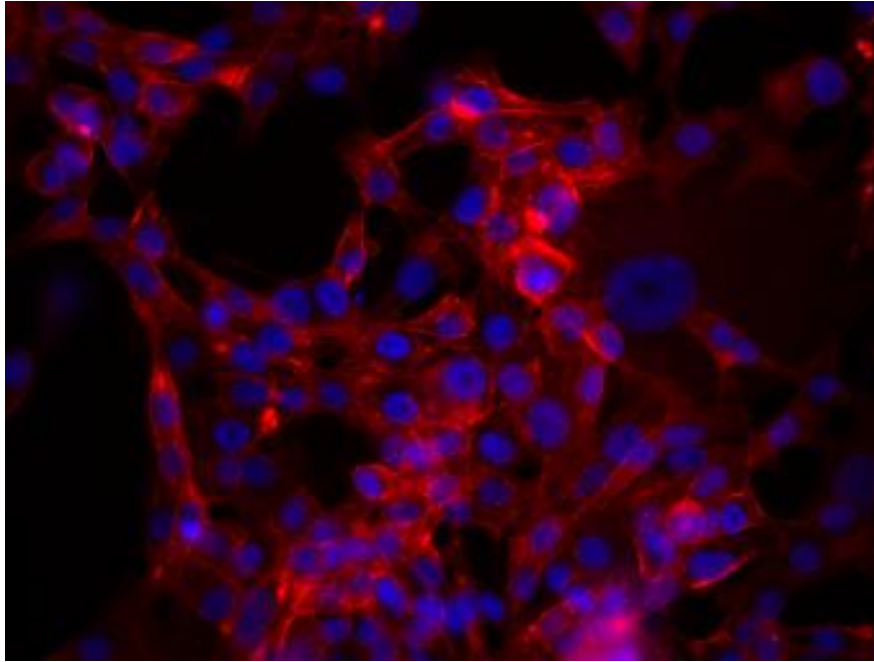


**Alexa Fluor® 647 anti-mouse/human CD44 Antibody**



MDA-MB231 breast cancer cell line stained with 5 $\mu$ g/mL anti-human CD44 Alexa Fluor® 647 and nuclear counterstained with DAPI. Images were acquired with a TE300 fluorescence microscope with a 20x objective.

Data provided by: Er Liu and John Nolan, La Jolla Bioengineering Institute