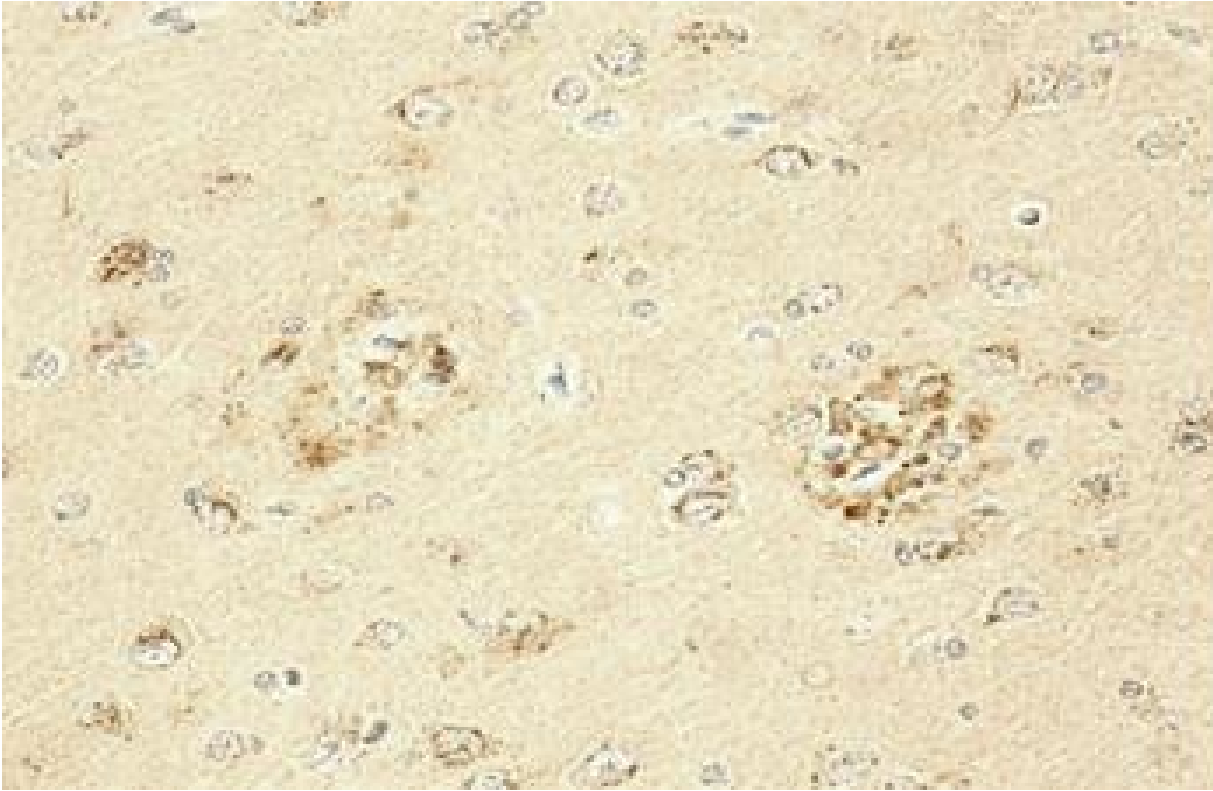


Purified anti-Clusterin Antibody



IHC staining of anti-Clusterin antibody (clone A15113A) on formalin-fixed paraffin-embedded brain tissue of a patient with Alzheimer's disease. Following antigen retrieval using Sodium Citrate H.I.E.R. and 0.25% Triton X-100, the tissue was incubated with the primary antibody at 5 µg/ml overnight at 4°C. BioLegend's Ultra-Streptavidin (USA) HRP Detection Kit was used for detection followed by hematoxylin counterstaining, according to the protocol provided.