

D2-40 Lymphatic Endothelial Marker Monoclonal Antibody

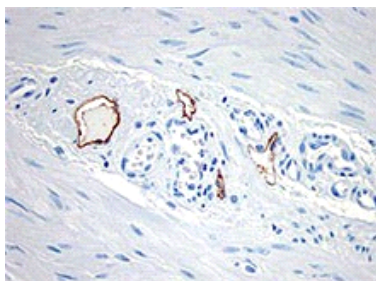
Catalog# / Size	916604 / 6 mL 916601 / 100 µL 916603 / 6 mL 916602 / 1 mL
Clone	D2-40
Isotype	Mouse IgG1, κ
Description	<p>This antibody is effective in immunohistochemistry (IHC).</p> <p>Clone D2-40 reacts with a O-linked sialoglycoprotein (MW 40 kD) found on lymphatic endothelium, fetal testis and on the surface of testicular germ cell tumors. Clone D2-40 (D240) has shown staining in lymphatic channel endothelium but not in the adjacent capillary.</p> <p>Concentrated Format: Cat. No. 916601 (Formerly: SIG-3730-100) [0.1 ml] Cat. No. 916602 (Formerly: SIG-3730-1000) [1 ml]</p> <p>Prediluted Formats: Cat. No. 916603 (Formerly: SIG-3730-16) [6 ml Level 1]-ready to use for automated stainers Cat. No. 916604 (Formerly: SIG-3730-26) [6 ml Level 2]-ready to use for manual staining</p> <p>Both are ready-to-use with a Biotin-based (USA Ultra Streptavidin Detection, Cat. No. 929501) detection system.</p>

Product Details

Product Information	<p>Intended Use: In Vitro Diagnostic (IVD). Use in immunohistochemistry (IHC) test methods only. The monoclonal antibody D2-40 is used for the in vitro examination of human biological samples using immunohistochemistry (IHC) methods for the qualitative identification of D2-40 Lymphatic Endothelial Marker. The clinical interpretation of any staining or its absence should be complemented by morphological studies and proper controls and should be evaluated within the context of the patient's clinical history and other diagnostic tests by a qualified pathologist.</p>
Reactivity	Human
Immunogen	This antibody was developed using M2A.
Formulation	Phosphate-buffered solution with BSA + 0.1% NaN ₃ .
Preparation	Ammonium sulfate precipitated TCS.
Storage & Handling	Store between 2°C and 8°C.
Recommended Usage	<p>Each lot of this antibody is quality control tested by immunohistochemical staining.</p> <p>The optimal working dilution should be determined for each specific assay condition.</p> <ul style="list-style-type: none"> • IHC: ≥1:40 (concentrated format) for Biotin based detection systems such as USA Ultra Streptavidin Detection (Cat. No. 929501). <p><i>Tissue Sections:</i> Formalin-fixed, paraffin-embedded tissues, frozen sections <i>Pretreatment:</i> Not required <i>Incubation:</i> 60 minutes at room temperature</p>
Application References (PubMed link indicates BioLegend citation)	<ol style="list-style-type: none"> 1. Hamanaka T, et al. 2011. Invest. Ophthalmol. Vis. Sci. 52:8849. (IHC) PubMed 2. Choi WW, et al. 2005. Mod Pathol. 18:143. PubMed 3. Chu AY, et al. 2005. Mod Pathol. 18:105. 4. Dumoff KL, et al. 2005. Mod Pathol. 18:97. 5. Galambos C, Nodit L. 2005. Ped Dev Pathol. 8:181. 6. Fogt F, et al. 2004. Oncol Rep. 11:47. 7. Fogt F, et al. 2004. Int J Molec Med. 13:681.
Disclaimer	<p>WARNINGS AND PRECAUTIONS</p> <ol style="list-style-type: none"> 1. Use appropriate personal protective equipment and safety practices per universal precautions when working with this reagent. Refer to the reagent safety data sheet. 2. This antibody contains sodium azide. Follow federal, state and local regulations to dispose of this reagent. Sodium azide build-up in metal wastepipes may lead to explosive conditions; if disposing of reagent down wastepipes, flush with water after disposal.

3. All specimens, samples and any material coming in contact with them should be considered potentially infectious and should be disposed of with proper precautions and in accordance with federal, state and local regulations.
4. Do not use this reagent beyond the expiration date stated on the label.
5. Do not use this reagent if it appears cloudy or if there is any change in the appearance of the reagent as these may be indication of possible deterioration.

Product Data



Immunohistochemistry showing lymphatic channels with staining of the endothelium. The adjacent small blood vessels show no staining of their endothelium. The section is from muscularis propria of bowel (40X).

Symbols Glossary*

Symbol	Meaning	Symbol Title	Symbol No.	Symbol	Meaning	Symbol Title	Symbol No.
	Catalog number	Catalogue number	5.1.6		Indicates the need for the user to consult the instructions for use.	Consult instructions for use	5.4.3
	Indicates the temperature limits to which the medical device can be safely exposed.	Temperature limit	5.3.7		Indicates a medical device that needs protection from light sources.	Keep away from sunlight	5.3.2
	Indicates the upper limit of temperature to which the medical device can be safely exposed.	Upper limit of temperature	5.3.6		Indicates the date after which the medical device is not to be used.	Use-by date	5.1.4
	Indicates the medical device manufacturer.	Manufacturer	5.1.1		Indicates the authorized representative in the European Community.	Authorized representative in the European Community	5.1.2
	Indicates the manufacturer's batch code so that the batch or lot can be identified.	Batch code	5.1.5		Indicates a medical device that is intended to be used as an in vitro diagnostic medical device.	<i>In vitro</i> diagnostic medical device	5.5.1

* Symbol information is from EN ISO 15223-1:2016 Medical devices – Symbols to be used with medical device labels, labelling and information to be supplied – Part 1: General requirements

Not for resale. BioLegend will not be held responsible for patent infringement or other violations that may occur with the use of our products.

*These products may be covered by one or more Limited Use Label Licenses (see the BioLegend Catalog or our website, www.biolegend.com/ordering#license). BioLegend products may not be transferred to third parties, resold, modified for resale, or used to manufacture commercial products, reverse engineer functionally similar materials, or to provide a service to third parties without written approval of BioLegend. By use of these products you accept the terms and conditions of all applicable Limited Use Label Licenses. Unless otherwise indicated, these products are for research use only and are not intended for human or animal diagnostic, therapeutic or commercial use.

8999 BioLegend Way, San Diego, CA 92121 www.biolegend.com
Toll-Free Phone: 1-877-Bio-Legend (246-5343) Phone: (858) 768-5800 Fax: (877) 455-9587