

Keratin 5 Polyclonal Chicken Antibody, Purified

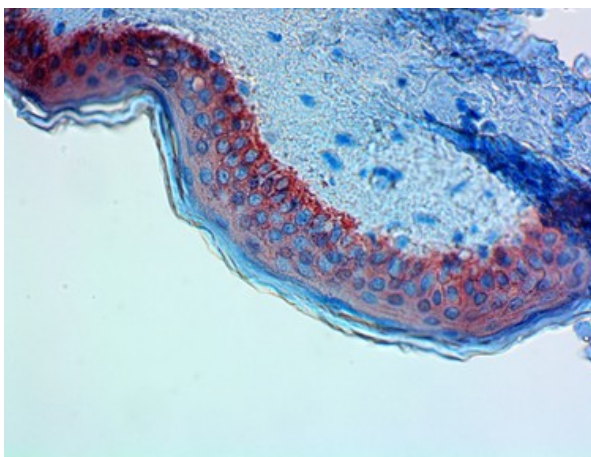
Catalog# / Size	905901 / 100 µL
Clone	Poly9059
Isotype	Chicken IgY
Description	This antibody is effective in immunohistochemistry (IHC).

Product Details

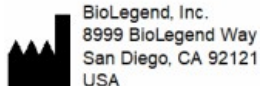
Product Information	Intended Use: In Vitro Diagnostic (IVD). Use in immunohistochemistry (IHC) test methods only. The polyclonal antibody Poly9059 is used for the in vitro examination of paraffin-embedded human skin tissue sections using immunohistochemistry (IHC) methods for the qualitative identification of Keratin 5. The clinical interpretation of any staining or its absence should be complemented by morphological studies and proper controls and should be evaluated within the context of the patient's clinical history and other diagnostic tests by a qualified pathologist.
Reactivity	Human
Immunogen	This polyclonal antibody was raised against a peptide sequence derived from the C-terminus of the mouse keratin 5 protein.
Formulation	Phosphate-buffered solution + 0.1% sodium azide.
Preparation	The antibody was purified by IgY affinity chromatography.
Concentration	1.0 mg/mL
Storage & Handling	Store at -20°C. Upon initial thawing, apportion into working aliquots and store at -20°C. Avoid repeated freeze-thaw cycles to prevent denaturing the antibody. For long-term storage, keep the antibody at -80°C.
Recommended Usage	Each lot of this antibody is quality control tested by immunohistochemical staining of formalin-fixed paraffin-embedded sections of human skin. The optimal working dilution should be determined for each specific assay condition. • IHC: 1:200 -1:1,000 with a biotin based detection system such as biotinylated anti-chicken immunoglobulin and USA Ultra Streptavidin Detection (Cat. No. 929501). Positive Control tissue: Human skin <i>Tissue Sections:</i> Paraffin-embedded tissues <i>Pretreatment:</i> For optimal staining, the sections should be pretreated with an antigen unmasking solution such as Sodium Citrate H.I.E.R Retrieval solution (Cat. No. 928502). <i>Incubation:</i> 60 minutes at room temperature
Application References (PubMed link indicates BioLegend citation)	<ol style="list-style-type: none">1. Yuspa SH, Kilkenny AD, Steinert PM, Roop DR. Expression of murine epidermal differentiation markers is tightly regulated by restricted extracellular calcium concentrations in-vitro. <i>J Cell Biol</i> 109:1207-1217, 1989.2. Roop DR, Cheng CK, Titterton L, Meyers CA, Stanley JR, Steinert PM, Yuspa SH. Synthetic peptides corresponding to keratin subunits elicit highly specific antibodies. <i>J Biol Chem</i> 259:8037-8040, 1984.
Disclaimer	WARNINGS AND PRECAUTIONS <ol style="list-style-type: none">1. Use appropriate personal protective equipment and safety practices per universal precautions when working with this reagent. Refer to the reagent safety data sheet.2. This antibody contains sodium azide. Follow federal, state and local regulations to dispose of this reagent. Sodium azide build-up in metal wastepipes may lead to explosive conditions; if disposing of reagent down wastepipes, flush with water after disposal.3. All specimens, samples and any material coming in contact with them should be considered potentially infectious and should be disposed of with proper precautions and in accordance with federal, state and local regulations.4. Do not use this reagent beyond the expiration date stated on the label.

5. Do not use this reagent if it appears cloudy or if there is any change in the appearance of the reagent as these may be indication of possible deterioration.

Product Data



Anti-Keratin 5 antibody (clone Poly9059) showing strong cytoplasmic staining of the basal cells of normal human skin epidermis.



UK Responsible Person
MedEnvoy UK Limited
 85, Great Portland Street, First Floor
 London, W1W 7LT
 United Kingdom

Symbol	Symbol Title	Description
	CE marking	A "CE" mark indicates that a product has been assessed before being placed on the market, and has been found to meet European Union safety, health, and/or environmental protection requirements.
	UKCA marking	A "UKCA" mark indicates that a product has been assessed before being placed in the UK market, and has been found to meet UK safety, health, and/or environmental protection requirements.

Symbols Glossary*

Symbol	Meaning	Symbol Title	Symbol No.	Symbol	Meaning	Symbol Title	Symbol No.
	Catalogue number	Catalogue number	5.1.6		Indicates the need for the user to consult the instructions for use.	Consult instructions for use	5.4.3
	Indicates the temperature limits to which the medical device can be safely exposed.	Temperature limit	5.3.7		Indicates a medical device that needs protection from light sources.	Keep away from sunlight	5.3.2
	Indicates the upper limit of temperature to which the medical device can be safely exposed.	Upper limit of temperature	5.3.6		Indicates the date after which the medical device is not to be used.	Use-by date	5.1.4
	Indicates the medical device manufacturer.	Manufacturer	5.1.1		Indicates the authorized representative in the European community.	Authorized representative in the European community.	5.1.2
	Indicates the manufacturer's batch code so that the batch or lot can be identified.	Batch code	5.1.5		Indicates a medical device that is intended to be used as an in vitro diagnostic medical device.	<i>In vitro</i> diagnostic medical device	5.5.1

* Symbol information is from EN ISO 15223-1:2016 Medical Devices-Symbols to be used with medical device labels, labelling and information to be supplied-Part 1: General requirements

Not for resale. BioLegend will not be held responsible for patent infringement or other violations that may occur with the use of our products.

*These products may be covered by one or more Limited Use Label Licenses (see the BioLegend Catalog or our website, www.biolegend.com/ordering#license). BioLegend products may not be transferred to third parties, resold, modified for resale, or used to manufacture commercial products, reverse engineer functionally similar materials, or to provide a service to third parties without written approval of BioLegend. By use of these products you accept the terms and conditions of all applicable Limited Use Label Licenses.

8999 BioLegend Way, San Diego, CA 92121 www.biolegend.com
Toll-Free Phone: 1-877-Bio-Legend (246-5343) Phone: (858) 768-5800 Fax: (877) 455-9587