



Enabling Legendary Discovery™

LEGENDplex™

Multi-Analyte Flow Assay Kit

Human Growth Factor Panel V02
Mix and Match Subpanel

Please read the entire manual before running the assay.

BioLegend.com

Table of Contents	Page
Chapter 1: KIT DESCRIPTION	3
Introduction.....	3
Principle of the Assay.....	3
Beads Usage.....	4
Storage Information.....	6
Materials Supplied.....	6
Materials to be Provided by the End-User.....	8
Precautions.....	9
Chapter 2: ASSAY PREPARATION	10
Sample Collection and Handling.....	10
Reagent Preparation.....	10
Standard Preparation.....	11
Sample Dilution.....	12
Chapter 3: ASSAY PROCEDURE	13
Performing the Assay Using a Filter Plate.....	13
Performing the Assay Using V-Bottom Plate.....	16
Chapter 4: FLOW CYTOMETER SETUP	19
Chapter 5: DATA ACQUISITION AND ANALYSIS	19
Data Acquisition.....	19
Data Analysis.....	20
Chapter 6: ASSAY CHARACTERIZATION	21
Representative Standard Curve.....	21
Assay Sensitivity.....	21
Cross-Reactivity.....	22
Accuracy.....	22
Linearity of Dilution.....	23

It is highly recommended that this manual be read in its entirety before using this product. Do not use this kit beyond the expiration date.

For Research Purposes Only. Not for use in diagnostic or therapeutic procedures. Purchase does not include or carry the right to resell or transfer this product either as a stand-alone product or as a component of another product. Any use of this product other than the permitted use without the express written authorization of BioLegend is strictly prohibited.

Human Growth Factor Panel V02 Mix and Match Subpanel

Intra-Assay Precision.....	24
Inter-Assay Precision.....	25
Biological Samples.....	26
TROUBLESHOOTING.....	30
PLATE MAP.....	33

Human Growth Factor Panel V02 Mix and Match Subpanel

Chapter 1: KIT DESCRIPTION

Introduction

Growth factors activate cell proliferation and differentiation and regulate many cellular processes including angiogenesis, hematopoiesis, tumorigenesis, metabolism, inflammation and tissue repair. They could also be potential therapeutic targets and disease biomarkers. The accurate measurement of growth factors is critical for a better understanding of disease progression and related cellular processes.

The LEGENDplex™ Human Growth Factor Panel V02 is a bead-based multiplex assay, using fluorescence–encoded beads suitable for use on various flow cytometers. This panel allows simultaneous quantification of 13 human growth factors: TGF-β1, Angiopoietin-2 (Ang-2), EGF, EPO, G-CSF, GM-CSF, HGF, M-CSF, PDGF-AA, PDGF-BB, SCF, FGF-basic and VEGF. This panel provides higher sensitivity and broader dynamic range than traditional ELISA methods. The panel has been validated for use on serum, plasma and cell culture supernatant samples.

The Human Growth Factor Panel V02 is designed to allow flexible customization within the panel. For mix and match within the panel, please visit <https://www.biolegend.com/en-us/legendplex>

This assay is for research use only.

Principle of the Assay

BioLegend's LEGENDplex™ assays are bead-based immunoassays using the same basic principle as sandwich immunoassays.

Beads are differentiated by size and internal fluorescence intensities. Each bead set is conjugated with a specific antibody on its surface and serves as the capture beads for that particular analyte. When a selected panel of capture beads is mixed and incubated with a sample containing target analytes specific to the capture antibodies, each analyte will bind to its specific capture beads. After washing, a biotinylated detection antibody cocktail is added, and each detection antibody in the cocktail will bind to its specific analyte bound on the capture beads, thus forming capture bead-analyte-detection antibody sandwiches. Streptavidin-phycoerythrin (SA-PE) is subsequently added, which will bind to the biotinylated detection antibodies, providing fluorescent signal intensities in proportion to the amount of bound analytes.

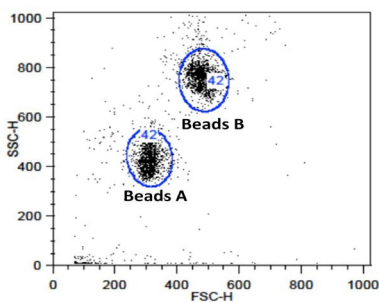
Since the beads are differentiated by size and internal fluorescence intensity on a flow cytometer, analyte-specific populations can be segregated and PE fluorescent signal quantified. The concentration of a particular analyte is determined using a standard curve generated in the same assay.

Beads Usage

The Human Growth Factor Panel V02 uses two sets of beads. Each set has a unique size that can be identified based on their forward scatter (FSC) and side scatter (SSC) profiles (Beads A and Beads B, Figure 1). Each bead set can be further resolved based on their internal fluorescence intensities. The internal dye can be detected using FL3, FL4, or APC channel, depending on the type of flow cytometer used. The smaller Beads A consists of 6 bead populations and the larger Beads B consists of 7 bead populations (Figure 2-3).

Using a total of 13 bead populations distinguished by size and internal fluorescent dye, the Human Growth Factor Panel V02 allows simultaneous detection of 13 growth factors in a single sample. Each analyte is associated with a particular bead set as indicated (Figures 2-3 and Table 1).

Figure 1. Beads Differentiated by Size



Beads A = smaller beads

Beads B = larger beads

Figure 2. Beads A Classification by FL4

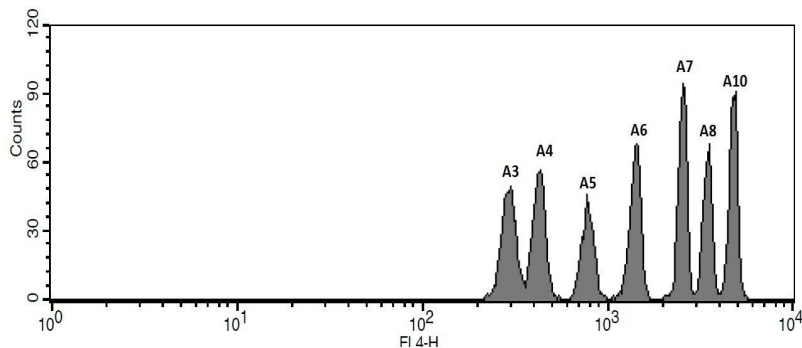
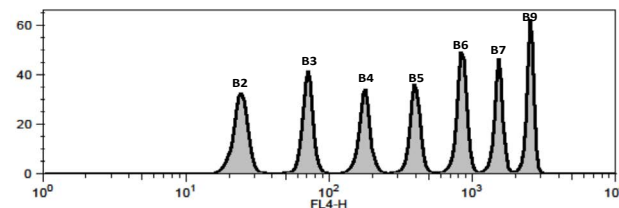


Figure 3. Beads B Classification by FL4



For Beads usage in the panel, please refer to Table 1 below:

Table 1. Beads ID*, Top Standard Concentrations and Panel-Specific Target Selection

Target	Bead ID	Top Standard Concentrations
Human TGF-β1	A3	Note: The top standard concentrations of analytes in this panel were set at various concentrations, but may be subject to change from lot to lot (please visit biologend.com/en-us/legendplex to download a lot-specific certificate of analysis).
Human Angiopoietin-2	A4	
Human EGF	A5	
Human EPO	A6	
Human G-CSF	A7	
Human GM-CSF	A10	
Human HGF	B2	
Human M-CSF	B3	
Human PDGF-AA	B4	
Human PDGF-BB	B5	
Human SCF	B6	
Human FGF-basic	B7	
Human VEGF	B9	

*Bead ID is used to associate a bead population to a particular analyte when using the LEGENDplex™ data analysis software program. For further information regarding the use of the program please visit biologend.com/en-us/legendplex.

Storage Information

Recommended storage for all original kit components is between 2°C and 8°C. DO NOT FREEZE Beads, Detection Antibodies or SA-PE.

- Once the standards have been reconstituted, immediately transfer contents into polypropylene vials. DO NOT STORE RECONSTITUTED STANDARDS IN GLASS VIALS.
- Upon reconstitution, leftover standard and Matrix A1 should be stored at ≤-70°C for use within one month. Avoid multiple (>2) freeze-thaw cycles. Discard any leftover diluted standards.

Materials Supplied

The LEGENDplex™ kit contains reagents for 100 tests, listed in the table below. When assayed in duplicate, this is enough for an 8-point standard curve and 40 samples.

For the Mix and Match Subpanels, individual beads are provided at 13X concentration. The Buffer Set contains Setup Beads, all Buffers, Plate Sealers, Matrix, and SA-PE

Kit Components	Quantity	Volume	Cat/ Part #
Capture Beads* (see tables below for more information)	varies	varies	varies
LEGENDplex™ Human Growth Factor Panel V02 Detection Antibodies	1 bottle	3.5 mL	741283
LEGENDplex™ Human Growth Factor Panel V02 Standard	1 vial	lyophilized	741284
LEGENDplex™ Buffer Set M	1		740981
Filter Plate* or V-bottom Plate**	1 Plate		740377* or 740379**

* For kit with filter plate. ** For kit with V-bottom plate.

Capture beads for Mix and Match Subpanels*:

Bead Name	Quantity	Volume	Cat #
LEGENDplex™ Human TGF-β1 Capture Bead A3, 13X	1 vial	270 µL	741285
LEGENDplex™ Human Angiopoietin-2 Capture Bead A4, 13X	1 vial	270 µL	741286
LEGENDplex™ Human EGF Capture Bead A5, 13X	1 vial	270 µL	741287
LEGENDplex™ Human EPO Capture Bead A6, 13X	1 vial	270 µL	740183
LEGENDplex™ Human G-CSF Capture Bead A7, 13X	1 vial	270 µL	741288
LEGENDplex™ Human GM-CSF Capture Bead A10, 13X	1 vial	270 µL	740186
LEGENDplex™ Human HGF Capture Bead B2, 13X	1 vial	270 µL	741289
LEGENDplex™ Human M-CSF Capture Bead B3, 13X	1 vial	270 µL	740188
LEGENDplex™ Human PDGF-AA Capture Bead B4, 13X	1 vial	270 µL	741290
LEGENDplex™ Human PDGF-BB Capture Bead B5, 13X	1 vial	270 µL	741291
LEGENDplex™ Human SCF Capture Bead B6, 13X	1 vial	270 µL	740191
LEGENDplex™ Human FGF-basic Capture Bead B7, 13X	1 vial	270 µL	741292
LEGENDplex™ Human VEGF Capture Bead B9, 13X	1 vial	270 µL	741293

LEGENDplex™ Buffer Set M (Cat#: 740981)

Component	Quantity	Volume	Part #
Setup Beads: PE Beads	1 vial	1 mL	77842
Setup Beads: Raw Beads	1 vial	2 mL	77844
LEGENDplex™ SA-PE	1 bottle	3.5 mL	77743
LEGENDplex™ Matrix A1, Lyophilized	1 vial	lyophilized	75000601
LEGENDplex™ Assay Buffer	1 bottle	25 mL	77562
LEGENDplex™ Wash Buffer, 20X	1 bottle	25 mL	77564
Plate Sealers	4 sheets		78101

No plate is included in Buffer Set M. Plate need to be ordered separately. Please order the correct type of plate based on the preferred assay protocol (Cat# 740377 or 740378 for Filter Plate and Cat# 740379 for V-bottom Plate)

Materials to be provided by the end-user

- A flow cytometer equipped with two lasers (e.g., a 488 nm blue laser or 532 nm green laser and a 633-635 nm red laser) capable of distinguishing 575 nm and 660 nm or a flow cytometer equipped with one laser (e.g., 488 nm blue laser) capable of distinguishing 575 nm and 670 nm.

Partial list of compatible flow cytometers:

Flow Cytometer	Reporter Channel	Channel Emission	Classification Channel	Channel Emission	Compensation needed?
BD FACSCalibur™ (single laser)	FL2	575 nm	FL3	670 nm	Yes
BD FACSCalibur™ (dual laser)	FL2	575 nm	FL4	660 nm	No*
BD FACSAria™	Yellow	575 nm	Red	660 nm	No*
BD FACSCanto™ BD FACSCanto™ II	PE	575 nm	APC	660 nm	No*
BD™ LSR, LSR II BD LSRFortessa™	PE	575-585 nm	APC	660 nm	No*
BD FACSAria™	PE	575 nm	APC	660 nm	No*

*Compensation is not required for the specified flow cytometers when set up properly, but is recommended for consistent results.

For setting up the above flow cytometers, please follow the **Flow Cytometer Setup** guide in this manual or visit: www.biolegend.com/legendplex.

For flow cytometers not listed here, the end-user needs to set up the machine following similar guidelines. Please refer to **Setup Procedure for Other Flow Cytometers** section in Chapter 4.

- Multichannel pipettes capable of dispensing 5 µL to 200 µL
- Reagent reservoirs for multichannel pipette
- Polypropylene microfuge tubes (1.5 mL)
- Laboratory vortex mixer
- Sonicator bath (e.g., Branson Ultrasonic Cleaner model #B200, or equivalent)
- Aluminum foil
- Absorbent pads or paper towels
- Plate shaker (e.g., Lab-Line Instruments model #4625, or equivalent)
- Tabletop centrifuges (e.g., Eppendorf centrifuge 5415 C, or equivalent)

- 1.1 mL polypropylene micro FACS tubes, in 96-tube rack (e.g., National Scientific Supply Co, catalog # TN0946-01R, or equivalent).

If the assay is performed in a filter plate:

- A vacuum filtration unit (Millipore MultiScreen® HTS Vacuum Manifold, cat # MSVMHTS00 or equivalent). Instructions on how to use the vacuum manifold can be found at the supplier's website.
- A vacuum source (mini vacuum pump or line vacuum, e.g., Millipore Vacuum Pump, catalog # WP6111560, or equivalent)
- If needed, additional Filter plates can be ordered from BioLegend (Cat# 740377 or 740378).

If the assay is run in a V-bottom plate:

- Centrifuge with a swinging bucket adaptor for microtiter plates (e.g., Beckman Coulter Allegra™ 6R Centrifuge with MICROPLUS CARRIER adaptor for GH3.8 and JS4.3 Rotors).
- If needed, additional V-bottom plates can be ordered from BioLegend (Cat# 740379).

Precautions

- All blood components and biological materials should be handled as potentially hazardous. Follow universal precautions as established by the Center for Disease Control and Prevention and by the Occupational Safety and Health Administration when handling and disposing of infectious agents.
- Matrix A1 for LEGENDplex™ kits contains components of human origin and should be handled as potentially hazardous. The raw material has been screened for infectious diseases and is negative for HIV, HBV and HCV using FDA-approved test methods.
- Sodium azide has been added to some reagents as a preservative. Although the concentrations are low, sodium azide may react with lead and copper plumbing to form highly explosive metal azides. On disposal, flush with a large volume of water to prevent azide build-up.
- Do not mix or substitute reagents from different kits or lots. Reagents from different manufacturers should not be used with this kit.
- Do not use this kit beyond its expiration date.
- SA-PE and Capture Beads are light-sensitive. Minimize light exposure.

Chapter 2: ASSAY PREPARATION

Sample Collection and Handling

Preparation of Serum Samples (Recommended over plasma samples):

- Allow the blood to clot for at least 30 minutes and centrifuge for 10 minutes at 1,000 x *g*.
- Remove serum and assay immediately or aliquot and store samples at $\leq -20^{\circ}\text{C}$. Avoid multiple (>2) freeze/thaw cycles.
- When using frozen samples, it is recommended that samples are thawed completely, mixed and centrifuged to remove particulates prior to use.

Preparation of Plasma Samples:

- Centrifuge for 10 minutes at 1,000 x *g* within 30 minutes of blood collection.
- Remove plasma and assay immediately, or aliquot and store samples at $\leq -20^{\circ}\text{C}$. Avoid multiple (>2) freeze/thaw cycles.
- When using frozen samples, it is recommended that samples are thawed completely, mixed well and centrifuged to remove particulates.

Preparation of Cell Culture Supernatant:

- Centrifuge the sample to remove debris and assay immediately. If not possible, aliquot and store samples at $\leq -20^{\circ}\text{C}$. Avoid multiple (>2) freeze/thaw cycles.

Reagent Preparation

Preparation of Antibody-Immobilized Beads

The individual beads (13X) should be mixed and diluted to 1X with Assay Buffer prior to use. To mix the beads, follow the steps below (a 5-plex sub-panel is used as an example):

1. Sonicate the beads vials for 1 minute in a sonicator bath and then vortex for 30 seconds prior to use.
2. Calculate the amount of mixed and diluted beads needed for the assay. Prepare extra to compensate for pipetting loss. Each reaction needs 25 μL of mixed and diluted beads. For 50 reactions, prepare 1.5 mL of the pre-mixed beads. For 96 reactions, prepare 3 mL of the pre-mixed beads.

3. To make 1.5 ml of 5-plex 1X diluted beads, transfer 115 μL of each of the 5 individual beads (13X) to a fresh tube (total bead volume = 575 μL) and add 925 μL of Assay Buffer to make the final volume of 1.5 mL.

Preparation of Wash Buffer

- Bring the 20X Wash Buffer to room temperature and mix to bring all salts into solution.
- Dilute 25 mL of 20X Wash Buffer with 475 mL deionized water. Store unused portions between 2°C and 8°C for up to one month.

Preparation of Matrix A1 (for Serum or Plasma Samples Only)

- Add 5.0 mL LEGENDplex™ Assay Buffer to the bottle containing lyophilized Matrix A1. Allow at least 15 minutes for complete reconstitution. Vortex to mix well. Leftover reconstituted Matrix A1 should be stored at $\leq -70^{\circ}\text{C}$ for up to one month.

Standard Preparation

1. Prior to use, reconstitute the lyophilized Human Growth Factor Panel V02 Standard with 250 μL Assay Buffer.
2. Mix and allow the vial to sit at room temperature for 10 minutes, and then transfer the standard to an appropriately labeled polypropylene microfuge tube. This will be used as the top standard C7.

Note: The top standard concentrations of analytes in this panel were set at various concentrations, but may be subject to change from lot to lot (please visit biolegend.com/en-us/legendplex to download a lot-specific certificate of analysis).

3. Label 6 polypropylene microfuge tubes as C6, C5, C4, C3, C2 and C1, respectively.
4. Add 75 μL of Assay Buffer to each of the six tubes. Prepare 1:4 dilution of the top standard by transferring 25 μL of the top standard C7 to the C6 tube and mix well. This will be the C6 standard.
5. In the same manner, perform serial 1:4 dilutions to obtain C5, C4, C3, C2 and C1 standards (see the table below using the top standard at 1,000 ng/mL as an example). Assay Buffer will be used as the 0 pg/mL standard (C0).

Tube/ Standard ID	Serial Dilution	Assay Buffer to add (µL)	Standard to add	Final Conc. (pg/mL) *
C7	--	--	--	10,000
C6	1:4	75	25 µL of C7	2,500
C5	1:16	75	25 µL of C6	625
C4	1:64	75	25 µL of C5	156.3
C3	1:256	75	25 µL of C4	39.1
C2	1:1024	75	25 µL of C3	9.8
C1	1:4096	75	25 µL of C2	2.4
C0	--	75	--	0

Sample Dilution

- Serum or plasma samples must be diluted 2-fold with Assay Buffer before testing (e.g. dilute 50 µL of sample with 50 µL of Assay Buffer).

If further sample dilution is desired, dilution should be done with Matrix A1 to ensure accurate measurement.

Adding serum or plasma samples without dilution will result in low assay accuracy and possibly, clogging of the filter plate.

- For cell culture supernatant samples, the levels of analyte can vary greatly from sample to sample. While the samples can be tested without dilutions, a preliminary experiment may be required to determine the appropriate dilution factor.

If sample dilution is desired, dilution should be done with corresponding fresh cell culture medium to ensure accurate measurement.

Human Growth Factor Panel V02 Mix and Match Subpanel Chapter 3: ASSAY PROCEDURE

The LEGENDplex™ assay can be performed either in a filter plate or in a V-bottom microplate.

- This procedure requires a vacuum filtration unit for washing (see **Materials to be Provided by the End-User, page 8**).
- If the Filter plate assay procedure is not possible or if you prefer, the assay can be performed in a V-bottom plate.

Performing the Assay Using a Filter Plate

- Allow all reagents to warm to room temperature (20-25°C) before use.
 - Set the filter plate on an inverted plate cover at all times during assay setup and incubation steps, so that the bottom of the plate does not touch any surface. Touching a surface may cause leakage.
 - Keep the plate upright during the entire assay procedure, including the washing steps, to avoid losing beads.
 - The plate should be placed in the dark or wrapped with aluminum foil for all incubation steps.
 - **Standards and samples should be run in duplicate and arranged on the plate in a vertical configuration convenient for data acquisition and analysis (as shown in attached PLATE MAP, page 33). Be sure to load standards in the first two columns. If an automation device is used for reading, the orientation and reading sequence should be carefully planned.**
1. Pre-wet the plate by adding 100 µL of LEGENDplex™ 1X Wash Buffer to each well and let it sit for 1 minute at room temperature. To remove the excess volume, place the plate on the vacuum manifold and apply vacuum. Do not exceed 10" Hg of vacuum. Vacuum until wells are drained (5-10 seconds). Blot excess Wash Buffer from the bottom of the plate by pressing the plate on a stack of clean paper towels. Place the plate on top of the inverted plate cover.

For measuring cell culture supernatant samples, load the plate as shown in the table below (in the order from left to right):

	Assay Buffer*	Matrix A1	Standard	Sample
Standard Wells	25 µL	---	25 µL	---
Sample wells	25 µL	---	---	25 µL

***Note: Fresh cell culture media instead of assay buffer is preferred in standard wells if available**

Human Growth Factor Panel V02 Mix and Match Subpanel

For measuring serum or plasma samples, load the plate as shown in the table below (in the order from left to right):

	Assay Buffer	Matrix A1	Standard	Sample*
Standard Wells	---	25 μ L	25 μ L	---
Sample wells	25 μ L	---	---	25 μ L

*See **Sample Dilution**

- Vortex mixed beads bottle for 30 seconds. Add 25 μ L of mixed beads to each well. The volume should be 75 μ L in each well after beads addition. (Note: During addition of the beads, shake mixed beads bottle intermittently to avoid bead settling).
- Seal the plate with a plate sealer. **To avoid plate leaking, do not apply positive pressure to the sealer when sealing the plate.** Wrap the entire plate, including the inverted plate cover, with aluminum foil. Place the plate on a plate shaker, secure it and shake at approximate 500 rpm for 2 hours at room temperature.
- Do not invert the plate!** Place the plate on the vacuum manifold and apply vacuum as before in Step 1. Add 200 μ L of 1X Wash Buffer to each well. Remove Wash Buffer by vacuum filtration. Blot excess Wash Buffer from the bottom of the plate with an absorbent pad or paper towels. Repeat this washing step once more.
- Add 25 μ L of Detection Antibodies to each well.
- Seal the plate with a fresh plate sealer. Wrap the entire plate, including the inverted plate cover, with aluminum foil. Place the plate on a plate shaker and shake at approximately 500 rpm for 1 hour at room temperature.
- Do not vacuum!** Add 25 μ L of SA-PE to each well directly.
- Seal the plate with a fresh plate sealer. Wrap the entire plate, including the inverted plate cover, with aluminum foil. Place the plate on a plate shaker and shake at approximate 500 rpm for 30 minutes at room temperature.
- Repeat step 4 above.
- Add 150 μ L of 1X Wash Buffer to each well. Resuspend the beads on a plate shaker for 1 minute.
- Read samples on a flow cytometer, preferably within the same day of the assay (Note: Prolonged sample storage can lead to reduced signal).

If the flow cytometer is equipped with an autosampler, read the plate directly using the autosampler. **Please be sure to program the autosampler**

Human Growth Factor Panel V02 Mix and Match Subpanel

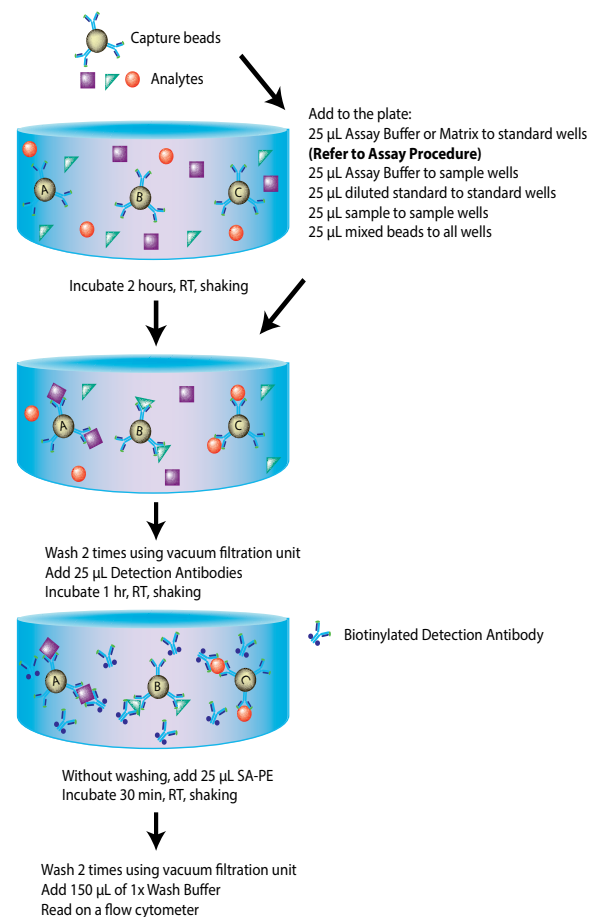
to resuspend beads in the well immediately before taking samples. The probe height may need to be adjusted when using an autosampler.

If an autosampler is not available, the samples can be transferred from the filter plate to micro FACS (or FACS) tubes and read manually.

Assay Procedure Summary for Filter Plate

Add 100 μ L 1X Wash Buffer to filter plate wells

Vacuum to remove excess buffer



Performing the Assay Using a V-bottom Plate

- Allow all reagents to warm to room temperature (20-25°C) before use.
- Keep the plate upright during the entire assay procedure, including the washing steps, to avoid losing beads.
- The plate should be placed in the dark or wrapped with aluminum foil for all incubation steps.
- Standards and samples should be run in duplicate and arranged on the plate in a vertical configuration convenient for data acquisition and analysis (as shown in attached PLATE MAP, page 33). Be sure to load standards in the first two columns. If an automation device is used for reading, the orientation and reading sequence should be carefully planned.

1. **For measuring cell culture supernatant samples**, load the plate as shown in the table below (in the order from left to right):

	Assay Buffer*	Matrix A1	Standard	Sample
Standard Wells	25 µL	---	25 µL	---
Sample wells	25 µL	---	---	25 µL

***Note: Fresh cell culture media instead of assay buffer is preferred in standard wells if available**

For measuring serum or plasma samples, load the plate as shown in the table below (in the order from left to right):

	Assay Buffer	Matrix A1	Standard	Sample*
Standard Wells	---	25 µL	25 µL	---
Sample wells	25 µL	---	---	25 µL

***See Sample Dilution on page 12**

2. Vortex mixed beads for 30 seconds. Add 25 µL of mixed beads to each well. The total volume should be 75 µL in each well after beads addition. (Note: During beads addition, shake mixed beads bottle intermittently to avoid bead settling).
3. Seal the plate with a plate sealer. Cover the entire plate with aluminum foil to protect the plate from light. Shake at 800 rpm on a plate shaker for 2 hours at room temperature (**Depending on the shaker, the speed may need to be adjusted. The optimal speed is one that is high enough to keep beads in suspension during incubation, but not too high that it may cause sample to spill from the wells**).
4. Centrifuge the plate at 1050 rpm (~250 g) for 5 minutes, using a swinging bucket rotor (G.H 3.8) with microplate adaptor (Please refer to **Materials to**

be Provided by the End-User, page 8). Do not use excessive centrifugation speed as it may make it harder to resuspend beads in later steps.

Make sure the timer of the centrifuge works properly and standby to make sure the centrifuge reaches preset speed.

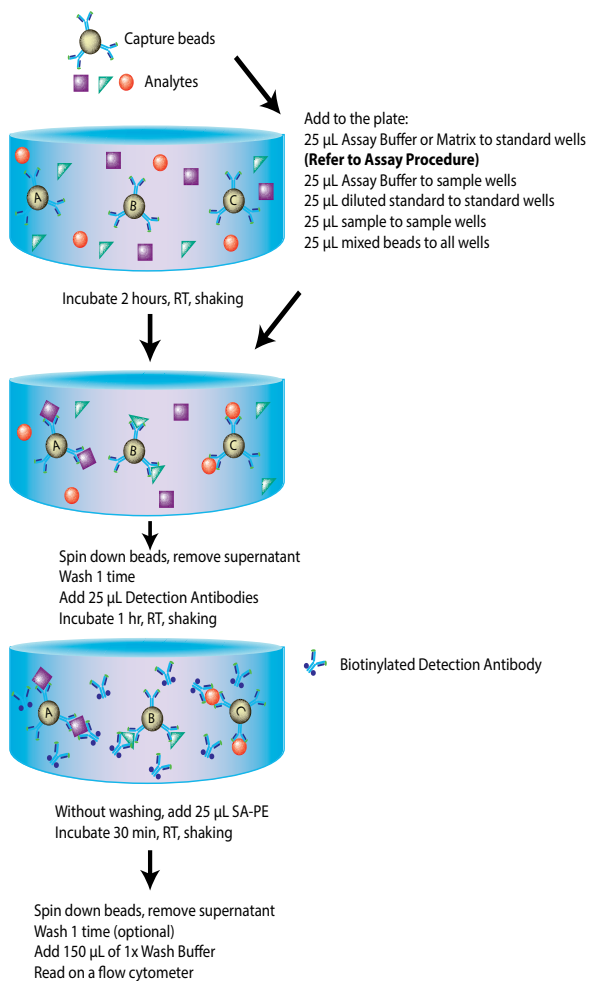
5. Immediately after centrifugation, dump the supernatant into a biohazard waste container by quickly inverting and flicking the plate **in one continuous and forceful motion**. The beads pellet may or may not be visible after dumping the supernatant. Loss of beads should not be a concern as the beads will stay in the tip of the well nicely. Blot the plate on a stack of clean paper towel and drain the remaining liquid from the well as much as possible. Be careful not to disturb the bead pellet.

Alternatively, removal of the supernatant may be completed using a multichannel pipette set at 75 µL. Try to remove as much liquid as possible without removing any beads. Be sure to change pipette tips between each row or column.

6. Wash the plate by dispensing 200 µL of 1X Wash Buffer into each well and incubate for one minute. Repeat step 4 and 5 above. A second wash is optional, but may help reduce background.
7. Add 25 µL of Detection Antibodies to each well.
8. Seal the plate with a new plate sealer. Cover the entire plate with aluminum foil to protect the plate from light. Shake at 800 rpm on a plate shaker for 1 hour at room temperature.
9. **Do not wash the plate!** Add 25 µL of SA-PE to each well directly.
10. Seal the plate with a new plate sealer. Wrap the entire plate with aluminum foil and shake the plate on a plate shaker at approximate 800 rpm for 30 minutes at room temperature.
11. Repeat step 4 and 5.
12. (This washing step is optional but helps to reduce the background.) Wash the plate by dispensing 200 µL of 1X Wash Buffer into each well and incubate for one minute. Repeat step 4 and 5 above.
13. Add 150 µL of 1X Wash Buffer to each well. Resuspend the beads by pipetting.
14. Read samples on a flow cytometer, preferably within the same day of the assay (Note: Prolonged sample storage can lead to reduced signal).
If the flow cytometer is equipped with an autosampler, the samples can be read directly. **Please be sure to program the autosampler to resuspend beads in the well immediately before taking samples. The probe height may need to be adjusted when using an autosampler.**

If an autosampler is not available, the samples can be transferred from the plate to micro FACS (or FACS) tubes and read manually.

Assay Procedure Summary for V-bottom Plate



Chapter 4: FLOW CYTOMETER SETUP

In order to generate reliable data, the flow cytometer must be set up properly before data acquisition.

The setup instructions have been removed from this manual and uploaded onto our website to save paper.

To access the setup instructions, please visit: www.biolegend.com/legendplex and click on the **Instrument Setup** tab.

Chapter 5: DATA ACQUISITION AND ANALYSIS

Data Acquisition

1. Before reading samples, make sure that the flow cytometer is set up properly.
2. Create a new template or open an existing template (for details on how to create a cytometer-specific template, please refer to the Flow Cytometer Setup Guide).
3. Vortex each sample for 5 seconds before analysis.
4. Set the flow rate to low. Set the number of beads to be acquired to about 300 per analyte (e.g., acquire 900 beads for a 3-plex assay or 3,000 beads for a 10-plex assay). Do not set to acquire total events as samples may contain large amounts of debris. Instead, create a large gate to include both Beads A and Beads B (gate A+B) and set to acquire the number of events in gate A + B. This will exclude majority of the debris.
5. Read samples.

Note: Do not acquire too few or too many beads. Too few beads acquired may result in high CVs and too many beads acquired may result in slow data analysis later.

When reading samples, set the flow cytometer to setup mode first and wait until bead population is stabilized before recording or switching to acquisition mode.

To simplify data analysis using the LEGENDplex™ Data Analysis Software, read samples in the same order as shown on the PLATE MAP attached at the end of the manual. For an in-plate assay, read column by column (A1, B1, C1...A2, B2, C2...).

Human Growth Factor Panel V02 Mix and Match Subpanel

When naming data files, try to use simple names with a consecutive numbering for easy data analysis (e.g. for standards, C0.001, C0.002, C1.003, C1.004, C2.005, C2.006, C3.007, C3.008, ... C7.015, C7.016; for samples, S1.017, S1.018, S2.019, S2.020, S3.021, S3.022...)

Store all FCS files in the same folder for each assay. If running multiple assays, create a separate folder for each assay.

- Proceed to data analysis using LEGENDplex™ Data Analysis Software when data acquisition is completed.

Data Analysis

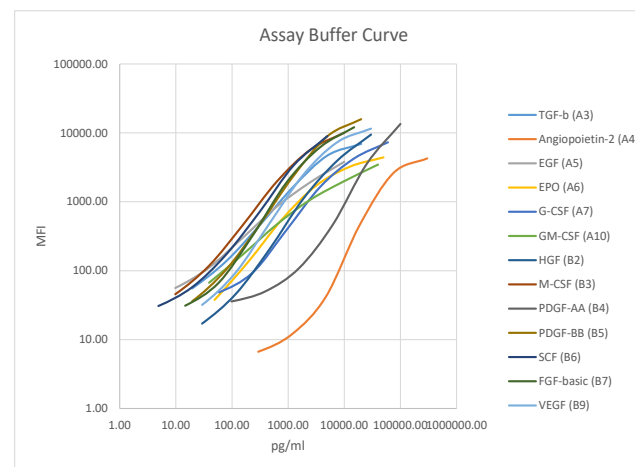
The assay FCS files should be analyzed using BioLegend's LEGENDplex™ data analysis software. The program is offered free of charge with the purchase of any LEGENDplex™ assay. For further information regarding access to, and use of the program please visit biolegend.com/en-us/legendplex.

Human Growth Factor Panel V02 Mix and Match Subpanel

Chapter 6: ASSAY CHARACTERIZATION

Representative Standard Curve

This standard curve was generated using the LEGENDplex™ Human Growth Factor Panel V02 for demonstration purpose only. A standard curve must be run with each assay.



Assay Sensitivity

The assay sensitivity or lower limit of detection (LOD) is the theoretical limit of detection calculated using the LEGENDplex™ Data Analysis Software by applying a 5-parameter curve fitting algorithm. Assay Sensitivity presented here is $LOD + 2 * STDEV$.

Analyte	LOD in Cell Culture Medium (pg/mL)	LOD in Serum (pg/mL)
Human TGF-β1	1.0+0.5	1.6+2.1
Human ANG-2	62.1+110.9	91.7+130.0
Human EGF	0.5+0.4	0.9+1.1
Human EPO	1.7+0.9	2.0+0.9
Human G-CSF	3.0+4.7	16.7+35.9
Human GM-CSF	1.2+0.3	1.5+0.9
Human HGF	1.8+2.8	1.9+1.7

Human Growth Factor Panel V02 Mix and Match Subpanel

Human M-CSF	0.5+0.4	0.5+0.4
Human PDGF-AA	15.0+31.3	21.2+22.4
Human PDGF-BB	0.9+0.4	3.9+6.7
Human SCF	0.3+0.2	0.3+0.2
Human FGF-basic	0.8+0.9	1.3+1.9
Human VEGF	1.7+2.5	2.9+3.7

Cross-Reactivity

The following recombinant proteins were tested at 50 ng/mL using the LEGENDplex™ Human Growth Factor Panel V02. VEGF pair can detect both VEGF165 and VEGF121. SCF pair detects free SCF proteins. PDGF-AA and PDGF-BB pairs can detect PDGF-AB. No or negligible cross-reactivity was found for all other analytes.

IL-1 α	IL-1 β	IL-4	IL-6	IL-8
IL-10	IL-12	IL-13	IL-17A	IL-18
IL-22	IL-23	IL-12p40	IL-12p70	IFN- α 2
IFN- β	IFN- γ	IFN- λ 1	IL-1RA	IL-2RA
CCL1	CCL2	CCL3	CCL4	CCL5
CCL7	CCL8	CCL13	CCL17	CCL18
CCL19	CCL22	CCL24	CXCL1	CXCL2
CXCL5	CXCL9	CXCL12	CXCL13	ANG-1
VEGF-B	VEGF-C	VEGF-D	PDGF-AB	TGF- α
TNF- α	TNF- β			

Accuracy (Spike Recovery)

For spike recovery in cell culture medium, RPMI or DMEM with 10% FCS was spiked with target proteins at three different levels within the assay range. The spiked samples were then assayed, and the measured concentrations were compared with the expected values.

For spike recovery in serum (n=8), samples were first diluted two-fold with Assay Buffer and spiked with target proteins at three different levels within the assay range. The spiked samples were then assayed, and the measured concentrations were compared with the expected values. **Note:** Low spike recovery for VEGF due to interference with VEGFR1.

Human Growth Factor Panel V02 Mix and Match Subpanel

Analyte	% of Recovery in Cell Culture Medium	% of Recovery in Serum
Human TGF- β 1	94%	52%
Human ANG-2	94%	81%
Human EGF	93%	72%
Human EPO	99%	78%
Human G-CSF	94%	97%
Human GM-CSF	98%	151%
Human HGF	97%	73%
Human M-CSF	83%	82%
Human PDGF-AA	91%	77%
Human PDGF-BB	95%	158%
Human SCF	96%	87%
Human FGF-basic	94%	87%
Human VEGF	99%	50%

Linearity of Dilution

For spike linearity in cell culture medium, RPMI or DMEM with 10% FCS was first diluted two-fold with Assay Buffer and spiked with a known concentration of target proteins. The spiked samples were serially diluted 1:2, 1:4, 1:8 with assay buffer and assayed. The measured concentrations of serially diluted samples were compared with that of the spiked samples.

For testing linearity in serum (n=8), samples were first diluted two-fold with Assay Buffer and spiked with a known concentration of target proteins. The spiked samples were serially diluted 1:2, 1:4, 1:8 with Matrix A1 and assayed. The measured concentrations of serially diluted samples were compared with that of the spiked samples. **Note:** High spike linearity for VEGF due to interference with VEGFR1.

Analyte	Linearity in Cell Culture Medium	Linearity in Serum
Human TGF- β 1	94%	186%
Human ANG-2	95%	111%

Human Growth Factor Panel V02 Mix and Match Subpanel

Human EGF	97%	134%
Human EPO	109%	133%
Human G-CSF	102%	116%
Human GM-CSF	119%	87%
Human HGF	89%	136%
Human M-CSF	78%	135%
Human PDGF-AA	79%	124%
Human PDGF-BB	81%	157%
Human SCF	100%	134%
Human FGF-basic	88%	108%
Human VEGF	96%	212%

Intra-Assay Precision

Two samples with different concentrations of target proteins were analyzed in one assay with 16 replicates for each sample. The intra-assay precision was calculated as below.

Analyte	Sample	Mean (pg/mL)	STDEV	%CV
Human TGF-β1	Sample 1	383.4	23.5	6%
	Sample 2	992.1	77.3	8%
Human ANG-2	Sample 1	4437.3	257.4	6%
	Sample 2	12451.8	1027.6	8%
Human EGF	Sample 1	175.9	13.8	8%
	Sample 2	468.1	46.0	10%
Human EPO	Sample 1	709.1	42.8	6%
	Sample 2	1881.5	146.2	8%
Human G-CSF	Sample 1	1129.7	65.9	6%
	Sample 2	2948.2	210.5	7%
Human GM-CSF	Sample 1	648.8	41.6	6%
	Sample 2	1698.4	167.6	10%
Human HGF	Sample 1	297.8	19.5	7%
	Sample 2	999.4	85.3	9%

Human Growth Factor Panel V02 Mix and Match Subpanel

Human M-CSF	Sample 1	166.2	9.0	5%
	Sample 2	448.1	33.7	8%
Human PDGF-AA	Sample 1	2260.9	213.5	9%
	Sample 2	7724.2	782.2	10%
Human PDGF-BB	Sample 1	462.0	26.5	6%
	Sample 2	1148.3	85.5	7%
Human SCF	Sample 1	97.9	6.9	7%
	Sample 2	237.4	17.6	7%
Human FGF-basic	Sample 1	224.2	11.2	5%
	Sample 2	779.4	49.4	6%
Human VEGF	Sample 1	578.8	26.4	5%
	Sample 2	1491.3	115.8	8%

Inter-Assay Precision

Two samples with different concentrations of target proteins were analyzed in ten independent assays by 5 different people with 4 replicates for each sample. The inter-assay precision was calculated as below.

Analyte	Sample	Mean (pg/mL)	STDEV	%CV
Human TGF-β1	Sample 1	378.3	36.2	10%
	Sample 2	926.3	59.2	6%
Human ANG-2	Sample 1	4429.0	574.4	13%
	Sample 2	11890.3	1289.0	11%
Human EGF	Sample 1	174.9	22.2	13%
	Sample 2	443.4	35.1	8%
Human EPO	Sample 1	811.1	73.9	9%
	Sample 2	2109.6	173.6	8%
Human G-CSF	Sample 1	1085.0	139.4	13%
	Sample 2	2866.7	290.4	10%
Human GM-CSF	Sample 1	682.0	80.5	12%
	Sample 2	1688.0	124.2	7%
Human HGF	Sample 1	389.7	76.3	20%
	Sample 2	1248.7	301.4	24%

Human Growth Factor Panel V02 Mix and Match Subpanel

Human M-CSF	Sample 1	175.4	16.3	9%
	Sample 2	447.9	29.2	7%
Human PDGF-AA	Sample 1	2728.7	623.2	23%
	Sample 2	6920.5	1560.2	23%
Human PDGF-BB	Sample 1	450.5	50.2	11%
	Sample 2	1034.0	111.4	11%
Human SCF	Sample 1	100.9	12.4	12%
	Sample 2	240.1	22.3	9%
Human FGF-basic	Sample 1	222.7	30.0	13%
	Sample 2	737.4	73.8	10%
Human VEGF	Sample 1	597.7	58.1	10%
	Sample 2	1501.8	121.1	8%

Biological Samples

Serum

Normal human serum samples (n=20) were tested for endogenous levels of growth factors. The concentrations measured are shown below:

Analyte	Range (pg/mL)	% of Detectable	Mean of detectable (pg/mL)
Human TGF-β1	10.8-86.4	100%	32.7
Human ANG-2	1259.5-12793.6	100%	6088.8
Human EGF	40.5-475.0	100%	119.9
Human EPO	ND-59.8	81%	14.4
Human G-CSF	ND-640.9	75%	174.3
Human GM-CSF	ND-39.7	81%	7.1
Human HGF	45.7-911.6	100%	285.6
Human M-CSF	0.97-35.8	100%	10.9
Human PDGF-AA	8228.6-49903.8	100%	25693.7
Human PDGF-BB	1336.6-17428.0	100%	7940.2
Human SCF	15.7-123.8	100%	44.3
Human FGF-basic	0.93-80.4	88%	16.4
Human VEGF	32.0-353.5	100%	138.7

ND = Not Detectable

Human Growth Factor Panel V02 Mix and Match Subpanel

Plasma

Normal human plasma samples (n=27) were tested for endogenous levels of growth factors. The concentrations measured are shown below:

Analyte	Range (pg/mL)	% of Detectable	Mean of detectable (pg/mL)
Human TGF-β1	ND-52.3	45%	16.9
Human ANG-2	792.1-9877.3	100%	2659.5
Human EGF	ND-53.7	85%	7.5
Human EPO	ND-15.8	68%	9.9
Human G-CSF	ND-372.3	53%	107.9
Human GM-CSF	ND-32.4	75%	4.7
Human HGF	6.5-686.5	100%	120.0
Human M-CSF	0.39-23.7	100%	3.7
Human PDGF-AA	156.7-28118.8	100%	3636.3
Human PDGF-BB	ND-5468.4	95%	681.6
Human SCF	9.8-120.3	100%	32.2
Human FGF-basic	ND-80.3	85%	19.4
Human VEGF	ND-86.9	87%	36.3

Cell Culture Supernatant

Human PBMC (1x10⁶ cells/mL) were cultured under various conditions (LPS 1 ug/mL; IFN-γ 100 ng/mL; CD3 1 μg/mL plate-coated; CD28 1 μg/mL soluble; PHA 10 μg/ml; PMA 20ng/ml; Poly I:C 50 ug/ml). Supernatants were collected after 3 days and assayed with the LEGENDplex™ Human Growth Factor Panel V02 kit. The results (all in pg/mL) are summarized below.

Analyte	Control	LPS-IFN-γ	CD3+CD28
Human TGF-β1	17.7	25.6	59.3
Human ANG-2	ND	ND	ND
Human EGF	13.8	7.9	46.0
Human EPO	ND	ND	ND
Human G-CSF	ND	2656.3	ND
Human GM-CSF	1.3	2.9	584.1

Human Growth Factor Panel V02 Mix and Match Subpanel

Human HGF	73.7	3.5	27.1
Human M-CSF	ND	0.8	659.1
Human PDGF-AA	514.0	676.0	3692.5
Human PDGF-BB	69.2	61.7	323.2
Human SCF	ND	ND	ND
Human FGF-basic	0.9	0.8	2.0
Human VEGF	11.1	64.7	ND

ND = Not Detectable

Analyte	PHA	PMA	Poly I:C
Human TGF-β1	70.4	21.2	8.7
Human ANG-2	ND	ND	ND
Human EGF	71.2	14.3	10.3
Human EPO	ND	2.4	1.6
Human G-CSF	1863.1	127.3	10.2
Human GM-CSF	15.0	56.8	4.7
Human HGF	3.6	3.6	1.1
Human M-CSF	6.5	653.1	0.4
Human PDGF-AA	4397.1	1585.4	337.6
Human PDGF-BB	498.3	47.4	171.5
Human SCF	ND	ND	ND
Human FGF-basic	3.9	23.8	ND
Human VEGF	774.4	ND	33.5

ND = Not Detectable

Human HUVEC (1x10⁶ cells/mL) were cultured. Supernatants were collected after 3 days and assayed with the LEGENDplex™ Human Growth Factor Panel V02 kit. The results (all in pg/mL) are summarized below.

Analyte	Unstimulated
Human TGF-β1	92.0
Human ANG-2	17184.0
Human EGF	>10000

Human Growth Factor Panel V02 Mix and Match Subpanel

Human EPO	ND
Human G-CSF	145.6
Human GM-CSF	1.5
Human HGF	1.0
Human M-CSF	5.4
Human PDGF-AA	3515.7
Human PDGF-BB	16.3
Human SCF	1.3
Human FGF-basic	355.4
Human VEGF	ND

ND = Not Detectable

TROUBLESHOOTING

Problem	Possible Cause	Solution
Bead population shifting upward or downward during acquisition	The strong PE signal from high concentration samples or standards may spill over to classification Channel (e.g., FL3/FL4/APC) and mess up the bead separation.	Optimize instrument settings using Kit Setup Beads, and make appropriate compensation between channels.
Filter plate will not vacuum or some wells clogged	Vacuum pressure is insufficient or vacuum manifold does not seal properly.	Increase vacuum pressure such that 0.2 mL buffer can be suctioned in 3-5 seconds. Clean the vacuum manifold and make sure no debris on the manifold. Press down the plate on the manifold to make a good seal.
	Samples have insoluble particles or sample is too viscous (e.g., serum and plasma samples)	Centrifuge samples just prior to assay setup and use supernatant. If high lipid content is present, remove lipid layer after centrifugation. Sample may need dilution if too viscous.
		If some wells are still clogged during washing, try the following: 1). Add buffer to all the wells, pipette up and down the clogged wells and vacuum again. 2). Use a piece of clean wipe, wipe the under side of the clogged wells and vacuum again. 3). Take a thin needle (e.g., insulin needle), while holding the plate upward, poke the little hole under each of the clogged wells and vacuum again. Do not poke too hard or too deep as it may damage the filter and cause leaking.
		Filter plate was used without pre-wet.

Insufficient bead count or slow reading	Beads inappropriately prepared	Sonicate bead vials and vortex just prior to addition. Agitate the pre-mixed beads intermittently in reservoir while pipetting this into the plate.
	Samples cause beads aggregation due to particulate matter or viscosity.	Centrifuge samples just prior to assay setup and use supernatant. If high lipid content is present, remove lipid layer after centrifugation. Sample may need dilution if too viscous.
	Beads were lost during washing for in-tube assay	Make sure beads are spun down by visually check the pellet (beads are in light blue or blue color). Be very careful when removing supernatant during washing.
	Probe may be partially clogged.	Sample probe may need to be cleaned, or if needed, probe should be removed and sonicated.
Plate leaked	Vacuum pressure set too high	Adjust vacuum pressure such that 0.2 mL buffer can be suctioned in 3-5 seconds. Do not exceed 10" Hg of vacuum.
	Plate set directly on table or absorbent towels during incubations or reagent additions	Set plate on plate holder or raised edge so bottom of filter is not touching any surface.
	Liquid present on the under side of the plate after vacuum	After washing, press down plate firmly on a stack of clean paper towels to dry the underside of the plate.
	Pipette touching and damaged plate filter during additions.	Pipette to the side of wells.
High background	Background wells were contaminated	Avoid cross-well contamination by changing tips between pipetting when performing the assay using a multichannel pipette.
	Insufficient washes	The background may be due to non-specific binding of SA-PE. Increase number of washes.
Debris (FSC/SSC) during sample acquisition	Debris or platelet may exist in sample solution.	Centrifuge samples before analyzing samples. Remove platelet as much as possible.

Variation between duplicate samples	Beads aggregation	Sonicate and vortex the Beads prior to use.
	Multichannel pipette may not be calibrated or inconsistent pipetting	Calibrate Pipette. Ensure good pipetting practice. Prime pipette before use may help.
	Plate washing was not uniform	Make sure all reagents are vacuumed out completely in all wash steps.
	Samples may contain particulate matters.	Centrifuge samples just prior to assay setup and use supernatant. If high lipid content is present, remove lipid layer after centrifugation. Sample may need dilution if too viscous.
Low or poor standard curve signal	The standard was incorrectly reconstituted, stored or diluted	Follow the protocol to reconstitute, store and dilute standard. Double check your calculation.
	Wrong or short incubation time	Ensure the time of all incubations was appropriate.
Signals too high, standard curves saturated	PMT value for FL2/PE set too high	Make sure the PMT setting for the reporter channel is appropriate
	Plate incubation time was too long	Use shorter incubation time.
Sample readings are out of range	Samples contain no or below detectable levels of analyte	Make sure the experiment to generate the samples worked. Use proper positive controls.
	Samples concentrations higher than highest standard point.	Dilute samples and analyze again.
	Standard curve was saturated at higher end of curve.	Make sure the PMT setting for the reporter channel is appropriate. Use shorter incubation time if incubation time was too long
Missed beads populations during reading, or distribution is unequal	Sample may cause some beads to aggregate.	Centrifuge samples just prior to assay setup and use supernatant. If high lipid content is present, remove lipid layer after centrifugation. Sample may need dilution if too viscous.
	Beads populations are not mixed properly	Make sure all bead populations are mixed. and in similar numbers.

PLATE MAP (for in-plate assay)

A	C0	C4	C5	C1	C2	C6	C7	C3	C3
B	C0	C4	C5	C1	C2	C6	C7	C3	C3
C	C1	C5	C5	C1	C2	C6	C7	C3	C3
D	C1	C5	C5	C1	C2	C6	C7	C3	C3
E	C2	C6	C6	C2	C3	C3	C4	C4	C4
F	C2	C6	C6	C2	C3	C3	C4	C4	C4
G	C3	C7	C7	C3	C4	C4	C4	C4	C4
H	C3	C7	C7	C3	C4	C4	C4	C4	C4
	1	2	3	4	5	6	7	8	9
	10	11	12	13	14	15	16	17	18
	19	20	21	22	23	24	25	26	27
	28	29	30	31	32	33	34	35	36
	37	38	39	40	41	42	43	44	45



LEGENDplex[™] Kits are manufactured by **BioLegend**
8999 BioLegend Way
San Diego, CA 92121
Tel: 1.858.768.5800
Tel: US & Canada Toll-Free: 1.877.Bio-Legend (1.877.246.5343)
Fax: 1.877.455.9587
Email: info@biolegend.com
biolegend.com

For a complete list of world-wide BioLegend offices and distributor
please visit our website at: biolegend.com