



LEGENDScreen[™]

Lyophilized Antibody Array

Human PE Kit

- Catalog Number:** 700007
- Size:** 1 Kit ready to use
1 test per antibody/well
- Reactivity:** Human
- Antibody Format:** PE-conjugated, lyophilized
- Configuration:** 371 pre-titrated antibodies, 360 specificities, including 10 isotype controls, arrayed on four 96-well plates, with one specificity per well.

It is highly recommended that this manual be read in its entirety before using this product.

Do not use this kit beyond the expiration date.

For research use only

BioLegend, Inc
biolegend.com

LEGENDSCREEN™ Human PE Kit

For Research Purposes Only. Not for use in diagnostic or therapeutic procedures. Purchase does not include or carry the right to resell or transfer this product either as a stand-alone product or as a component of another product. Any use of this product other than the permitted use without the express written authorization of BioLegend is strictly prohibited.

Table of Contents Page

Description.....	4
Materials Provided.....	4
Materials to be Provided by the End-User.....	5
Storage and Handling.....	5
Preparation of Cells for Staining.....	5
Plate Preparation.....	6
Cell Staining Procedure.....	7
Tips for Successful Staining.....	8
Data analysis.....	9
Frequently Asked Questions.....	10
Product Performance.....	11
Representative data.....	12
Plate Maps.....	13
Antibody Information Tables.....	17

LEGENDSCREEN™ Human PE Kit

Description

The LEGENDScreen™ Human PE Antibody kit contains 371 PE-conjugated monoclonal antibodies to cell surface markers as well as 10 mouse, rat, or hamster Ig isotype controls in a convenient 96 well, ready to use format. The kit can be used for screening human leukocytes, cell lines and cells isolated from tissues. If other co-stains are needed, they can be added to the wells following reconstitution. Positive “hits” from the screening can be quickly identified based on the plate map and the catalog number and clone information can be obtained using the tables on pages 17 through 28. Analysis with individual fluorochrome-conjugated antibodies should be performed to confirm the screening results. The LEGENDScreen™ Human PE Antibody Kit provides a convenient, easy to use, and powerful tool for immunology, stem cell, and cancer research.

Materials Provided

Description	Quantity	Size	Part#
LEGENDScreen™ Human PE Kit Plate #1	1 Plate	96-well	75140
LEGENDScreen™ Human PE Kit Plate #2	1 Plate	96-well	75141
LEGENDScreen™ Human PE Kit Plate #3	1 Plate	96-well	75142
LEGENDScreen™ Human PE Kit Plate #4	1 Plate	96-well	75143
Cell Staining Buffer	1 Bottle	500 mL	420201
Fixation Buffer	1 Bottle	100 mL	420801
Plate Sealers	12 Sheets	79.4mm x 141mm	78101

Materials to be Provided by the End User

1. Adjustable multichannel pipettes for measuring volumes ranging from 25 μL to 1,000 μL
2. Centrifuge with a rotor and adaptors for 96-well plates
3. Cell culture medium (for cell culture)
4. Cell dissociation buffer (for adherent cells)
5. 1X PBS (Phosphate-Buffered Saline): 8.0 g NaCl, 1.16 g Na_2HPO_4 , 0.2 g KH_2PO_4 , 0.2 g KCl, add deionized water to 1 liter; pH to 7.4, 0.2 μm filtered
6. Plastic reservoirs for pipetting deionized water or Cell Staining or Fixation Buffer with a multichannel pipette
7. A flow cytometer, preferably compatible with reading 96-well plates

Storage and Handling

1. Store unopened kit components at 2 - 8°C. Do not use this kit beyond its expiration date.
2. Once opened, reconstitute plates with distilled, deionized water. The reconstituted plates can be used immediately or sealed for storage at 2 - 8°C in the dark for up to one month.
3. Keep the buffer(s) at 2 - 8°C and use within one month after opening.

Preparation of Cells for Staining

1. Obtain desired tissue (*e.g. leukocytes, cell lines or tissue isolates*) and prepare a single cell suspension. Wash cells in 1X PBS or cell culture medium of choice, and resuspend in Cell Staining Buffer at a density between 4×10^6 and 1×10^7 cells/mL.
2. For cultured cells in suspension, spin and resuspend cells in Cell Staining Buffer at a density between 4×10^6 and 1×10^7 cells/mL.
3. For cultured adherent cells, dissociate cells using a mild enzyme or non-enzymatic dissociation buffer. Wash cells in 1X PBS or cell culture medium of choice, and resuspend in Cell Staining Buffer at a density between 4×10^6 and 1×10^7 cells/mL.
4. Filter the cells through a 40 μm cell strainer to remove any clumps. Keep the cells on ice before use. Approximately 22.5 mL of cells at a density

LEGENDSCREEN™ Human PE Kit

between 4×10^6 and 1×10^7 cells/mL are needed for all three plates. Lower cell density (e.g. 1.5×10^6 cells/mL) might be used depending on the application.

Plate Preparation

One hour before the staining, perform the following steps to prepare the plates.

1. Remove the lyophilized plates from the aluminum pouches.
2. Centrifuge the plates at $600 \times g$ for 10 minutes.
3. Make sure the lyophilized cakes settle to the bottom of the plates. Keep the plates upright at all times from this point forward. Handle plates with care so that the cakes are not agitated at any time.
4. Gently settle the plates on the bench away from drafts and air conditioning vents. If possible, discharge any static electricity on yourself prior to removing the cover. **Hold the plate firmly and carefully remove the plate cover from one corner, one well at a time, for easy opening and to prevent cross-well contamination.** You may need to wiggle the cover a little while pulling back slowly.
5. **Discard the cover. Do not move the plate, reseal with the original cover or apply any sealer until the lyophilized antibodies have been reconstituted.**
6. Reconstitute the lyophilized antibodies **immediately**, with 25 μ L/well of deionized water using a multichannel pipette. To avoid cross-contamination, do not let the pipette tips touch the wells. Make sure that all the cakes are dissolved in water. If a cake is stuck on the side of the well, aspirate the 25 μ L water added to the well and rinse the cake down to the bottom.
7. Seal the plates with the plate sealers provided.
8. Wait at least 15 minutes before the staining procedure. Keep the plates in the dark.

Notes:

- PE-conjugated antibodies are light-sensitive. Try to minimize the exposure of the plates to light as much as practically possible.

LEGENDSCREEN™ Human PE Kit

- Do not open the pouches until the day you are ready to run the experiment. Once the plates are removed from the pouches, the antibodies must be reconstituted immediately.
- If an experiment is not performed after reconstitution, plates can be sealed and stored in the dark at 2 - 8°C for up to one month.

Cell Staining Procedure

1. Using a multichannel pipette, add 75 µL of cells ($\sim 3 - 7.5 \times 10^5$ cells/well) to each well of the plates.
2. Set up extra tubes to stain cells for flow cytometer setup and compensation, if needed.
3. Using the multichannel pipette, gently mix the cell suspensions by pipetting up and down 2 - 3 times. **Be sure to change tips between each row or column.** Avoid creating bubbles while pipetting.
4. Incubate for 20 - 30 minutes at 2 - 8°C in the dark.
5. Spin the plates at $500 \times g$ for 10 minutes to pellet cells in each well. Immediately after centrifugation, dump the supernatant into the sink by quickly inverting and flicking the plate. Gently blot the plate on a clean paper towel, being careful not to disturb the cell pellet.
6. Using a multi-channel pipette add 200 µL of Cell Staining Buffer to each well. Gently mix up and down to resuspend cells. **Be sure to change tips between each row or column.**
7. Repeat step 5.
8. To fix the cells, using a multichannel pipette, aliquot 100 µL of Fixation Buffer into each well. Gently mix up and down to resuspend cells. **Be sure to change tips between each row or column.**
9. Incubate for 10 minutes at room temperature in the dark.
10. Repeat steps 5 - 6.
11. Repeat step 5 one more time.
12. Resuspend cells completely in 160 µL of Cell Staining Buffer per well and analyze using a flow cytometer. We recommend acquiring 70 µL of sample and collecting 5,000 - 10,000 events. Users should determine the optimal number of events to be collected based on specific application they are

testing. While the first plate is being acquired, store the other plates at 2 - 8°C in the dark.

Tips for a Successful Staining

1. Read the entire manual carefully before the experiment.
2. Plan the experiment in advance. Designate a full day for this experiment. Do not rush any step.
3. Make sure that the flow cytometer's autosampler is well maintained and working well before the experiment. If the flow cytometer does not have an autosampler, the samples from each well of the plates should be transferred to individual FACS tubes and tube adjust the sample volume to approximately 300µl or more to avoid running dry. Alternatively, a Cluster Tube System (such as Corning catalog # 4410) and acquired manually. The cluster tube can then be transferred to a regular FACS tube for acquisition.
4. Make sure that enough cells have been prepared for the staining. If there are not enough cells, you may choose to divide the staining into two separate experiments.
5. Depending on the application, the cell number needed for staining can be decreased. Successful staining has been done with 1×10^5 cells/well.
6. Make sure to prepare cells for machine setup and compensation. These cells should be treated the same way as the cells for staining in the plates.
7. Handle the plates with care. Keep the plates upright at all times and be careful not to knock the plates over.
8. Protect the plates from exposure to light as much as possible.
9. Use extra caution when opening the plate cover (**see Plate Preparation for instructions**). After the cover is removed, do not move or apply any sealers on the plates until the cakes are reconstituted. Applying plate sealers or any cover onto the plate before the cakes are reconstituted can result in cakes being dislodged and stuck to the cover or escaping from the wells.
10. Some cell surface markers are sensitive to enzymatic digestion. If adherent cells are being used for staining, a mild enzyme or non-enzymatic dissociation buffer should be used when possible.
11. Make sure cells are in a single cell suspension. DNase treatment is recommended to avoid clumps caused by dead cells.

12. Acquire only 70 μ L of the 160 μ L total volume so that a second run can be performed if necessary.

Data Analysis

We recommend labeling acquisition files as Plate 1_A1, Plate 1_A2 and so on. After sample acquisition is complete, transfer the files into FlowJo™, or equivalent analysis software. Using the “Create Group” function, group samples based on the isotype. This will help set gates for all samples of the same isotype. Antibodies are arranged by isotypes (isotype control followed by all antibodies of that isotype) – for example, Plate 1, A2 is Armenian hamster IgG isotype control and antibodies A3 through A5 are all of the Armenian hamster IgG isotype.

Create 10 groups based on the different isotype control antibodies as described below –

1. Armenian Hamster IgG isotype – Plate 1_A2-A5
2. Mouse IgG1, κ isotype – Plate 1_A6-H12, Plate 2_A2-H12 and Plate 3 A2-D10
3. Mouse IgG2a, κ isotype – Plate 3_D11-H12 and Plate 4_A2-B1
4. Mouse IgG2b, κ isotype – Plate 4_B2-E7
5. Mouse IgG3, κ isotype – Plate 4_E8-E10
6. Mouse IgM, κ isotype – Plate 4_E11-F5
7. Rat IgG1, κ isotype – Plate 4_F6-F8
8. Rat IgG2a, κ isotype –Plate 4_F9-G8
9. Rat IgG2b, κ isotype –Plate 4_G9-G12
10. Rat IgM, κ isotype –Plate 4_H1-H2

Once the groups are created in FlowJo™, go to the first group and gate around the population(s) of interest and then make a histogram plot for PE. Using the isotype control sample, set a gate on the positive population and then apply it to all files in that group. Repeat this process for the remaining 9 groups. Add statistics for percentage of positive, median fluorescence intensity (MFI), event count and any other statistic of interest. Import into an excel file for further analysis using the table editor function.

If comparing control and test samples, then the histograms can be overlaid for visual comparison. If using software other than FlowJo™ please follow a similar strategy.

Frequently Asked Questions

Q: What is the level of variability from one experiment to the other?

A: If the protocol is followed the variability should be minimal. The variability should be similar to single vial antibody staining.

Q: How should the kit be stored?

A: The kit should be stored at 2 - 8°C upon receipt. Once opened, the plates must be reconstituted immediately. Reconstituted plates can be used or stored at 2 - 8°C sealed in the dark and used within a month.

Q: How do I request a custom LEGENDScreen™ product with only my specificities of interest?

A: For more info, visit: [biolegend.com/custom_solutions](https://www.biolegend.com/custom_solutions)

Q: What are the guarantees regarding the lyophilized plate compared to the reconstituted plate?

A: Lyophilized product has a guaranteed shelf life of 6 months unopened. Reconstituted plates can be used or stored at 2 - 8°C sealed in the dark and used within a month. Be sure to properly seal the plates to prevent evaporation and shield the antibodies from light.

Q: I have added my own antibody solution to the lyophilized product, will the lyophilized antibody work?

A: Yes, as long as the fluorophores on these antibodies are compatible and proper compensation has been applied during acquisition and analysis.

Q: I am not going to use all the reconstituted antibody solution. Can I keep the leftover for later or re-dry the solution in the dark?

A: The antibody is in a one test per well format. There will not be any antibody left if the full test is used. Customers may decide to use less than the recommended volume per test, but this is not recommended and the performance is not guaranteed. Customers may also selectively transfer certain antibodies from the original plate to a new plate and use after reconstitution. If any antibody is not used after reconstitution, the plate can be sealed and store at 2 - 8°C for a month in the dark. Once reconstituted, re-drying is not recommended, as this may result in a loss of signal.

Q: If I don't have enough cells and use less than 4×10^6 /ml (3×10^5 cells/well), will it still work?

LEGENDSCREEN™ Human PE Kit

A: The kit may work with lower numbers of total cells, but we recommend trying to keep higher concentrations of cells for faster analysis. Of course, how many cells are needed depends on the specific application. Successful staining has been done with 1×10^5 cells/well.

Q: Are these plates made under sterile conditions?

A: The plates are not sterile. Handle them as you would handle a typical flow cytometry staining protocol or reagent.

Q: Can I use half or less of the plate and keep the rest for later?

A: Yes. Customers can use half of the plate or whatever specificities they are interested in. However, the whole plate should be reconstituted. The half plate of antibodies must be transferred to another empty plate for the staining. The remaining half must be sealed and stored at 2 - 8°C in the dark and used within a month.

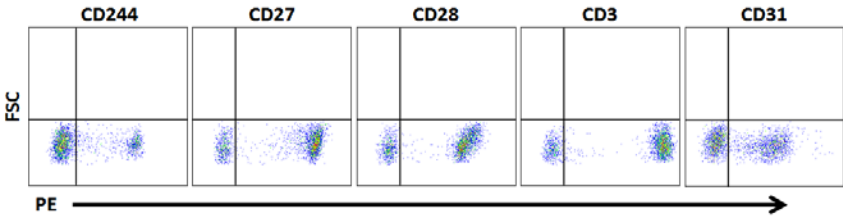
Product Performance

The LEGENDScreen™ Human PE Kit was tested and compared with BioLegend's cataloged single vial liquid antibody reagents. For cell staining, human PBMCs were isolated and 3×10^5 cells were added to each well after the lyophilized antibodies were reconstituted. The cells were then stained for 20 minutes at 2 - 8°C, washed, and fixed with Fixation Buffer. The cells were then washed, resuspended in 160 µL of Cell Staining Buffer, and analyzed using a Beckton Dickinson FACS Canto II Flow Cytometry Analyzer.

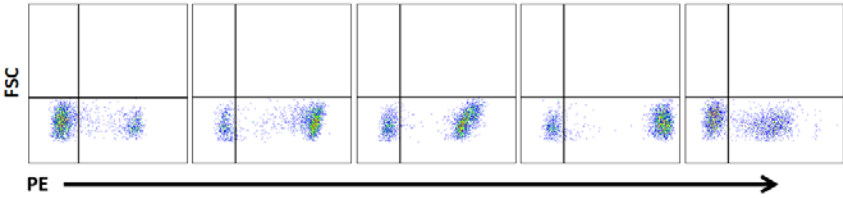
The staining patterns and median fluorescence intensity between the lyophilized product and liquid antibodies are similar. Below are some representative data obtained when comparing the LEGENDScreen™ Human (PE) Kit vs. equivalent liquid antibodies.

Representative data

Liquid Reagents



Legendscreen Reagents



LEGENDSCREEN™ Human PE Kit

Plate maps
Plate 1

	1	2	3	4	5	6	7	8	9	10	11	12
A	Blank	Armenian Hamster IgG isotype Ctrl	CCR10	CD278 (ICOS)	IFN- γ R β chain	Mouse IgG1, k isotype control	CD46	CD70	CD1a	CD2	β 2-microgl obulin	B7-H4
B	Cadheri n 11	CD10	CD100	CD103	CD105	CD106	CD107a (LAMP-1)	CD107b (LAMP-2)	CD109	CD111	CD112 (Nectin-2)	CD114
C	CD116	CD117 (c-kit)	CD119 (IFN- γ R α chain)	CD11a	CD11b	CD122	CD123	CD126 (IL-6 α)	CD127 (IL-7R α)	CD13	CD131	CD134
D	CD135	CD137 (4-1BB)	CD137L (4-1BB Ligand)	CD138	CD14	CD140a	CD140b	CD141	CD142	CD143	CD146	CD148
E	CD15	CD150 (SLAMF)	CD151	CD154	CD156c (ADAM 10)	CD158e1 (KIR3DL1, NK81)	CD16	CD161	CD162	CD163	CD164	CD165
F	CD166	CD169	CD170 (Siglec-5)	CD172a/b (SIRP α/β)	CD172g (SIRP γ)	CD178 (Fas-L)	CD179a	CD179b	CD18	CD180 (RP105)	CD182 (CXCR2)	CD183
G	CD185	CD19	CD191	CD194	CD1b	CD1c	CD200	CD200 R	CD202b (Tie2/T ek)	CD203c (E-NPP3)	CD205	CD206 (MIMR)
H	CD207 (Langerin)	CD21	CD213 α 1	CD213 α 2	CD218a (IL-18R α)	CD221 (IGF-1R)	CD223	CD226 (DNAMF-1)	CD227	CD229 (Ly-9)	CD23	CD231 (TALLA)

LEGENDSCREEN™ Human PE Kit

Plate 2

	1	2	3	4	5	6	7	8	9	10	11	12
A	Blank	CD244 (2B4)	CD245 (p220/240)	CD25	CD252 (OX40L)	CD261 (DR4, TRAIL-R1)	CD262 (DR5, TRAIL-R2)	CD263 (DcR1, TRAIL-R3)	CD266 (F _c γ _{1A} TWEAK Receptor)	CD268 (BAFF-R, BAFF)	CD27	CD271
B	CD275 (B7-H2, B7-RP1, ICOSL)	CD276	CD277	CD279 (PD-1)	CD28	CD29	CD290	CD298	CD3	CD30	CD300c	CD309/ VEGFR2
C	CD31	CD314 (NKG2D)	CD317	CD324 (E-Cadherin)	CD325	CD328 (Siglec-7)	CD33	CD334 (FGFR4)	CD335 (NKP46)	CD336 (NKP44)	CD337 (NKP30)	CD34
D	CD340 (erbB2/ HER-2)	CD344 (Frizzled-4)	CD35	CD354 (TREM-1)	CD360	CD365 (Tim-1)	CD366 (Tim-3)	CD367 (CLEC4A)	CD36L1	CD38	CD39	CD4
E	CD40	CD41	CD42b	CD43	CD44	CD45	CD47	CD48	CD49a	CD49b	CD49c	CD49d
F	CD5	CD50 (ICAM-3)	CD54	CD55	CD56	CD58	CD6	CD61	CD62E	CD62L	CD62P (P-Selectin)	CD63
G	CD64	CD69	CD73	CD74	CD79b	CD8	CD80	CD81	CD82	CD83	CD85g (ILT7)	CD85k (ILT3)
H	CD87	CD89	CD8a	CD9	CD90 (Thy1)	CD93	CD94	CD95	CD96	CD97	CD99	CXCL16

LEGENDSCREEN™ Human PE Kit

Plate 3

	1	2	3	4	5	6	7	8	9	10	11	12
A	Blank	DLL1	DLL4	DR3 (TRAMP)	EGFR	GITR	GPR19	GPR56	HLA-E	HVEM (TR2)	Ig light chain k	IgM
B	IL-21R	Integrin $\alpha\beta 1$	Jagged 2	Ksp37	LAP	LY666D	MERTK	MSC (W7C6)	MSC and NPC (W4A5)	MSCA-1 (MSC, W8B2)	MUC-13	NKp80
C	Notch 1	Notch 3	Notch 4	NPC (57D2)	NTB-A (NTBA)	PSMA	ROR1	Siglec-10	Siglec-7	Siglec-8	Siglec-9	SSEA-5
D	SUSD2	TCR α/β	TCR γ/d	Tim-4	TLT-2	TM4SF20	TRA-2-49	TRA-2-54	TSLPR (TSLP-R)	VEGFR3	Mouse IgG2a, k isotype control	APCDD1
E	BTLA	CCR8	CCR12	CD102	CD104	CD124	CD130	CD144	CD152 (CTLA-4)	CD155 (PVR)	CD158b (KIR2DL2/L3, NKAT2)	CD184 (CXCR4)
F	CD186	CD192	CD197 (CCR7)	CD199	CD209 (DC-SIGN)	CD217	CD230 (Prion)	CD24	CD243	CD26	CD269	CD282 (TLR2)
G	CD284 (TLR4)	CD301	CD303	CD304	CD307	CD323	CD357 (GITR)	CD36	CD369 (Dectin- 1/CLEC7A)	CD370 (CLEC9A/D NGR1)	CD371 (CLEC12A)	CD45RO
H	CD51	CD59	CD7	CD71	CD84	CD88	CRTAM	erbB3/ HER-3	FPR3	Ganglioside GD2	GPR83	HLA-A,B,C

LEGENDSCREEN™ Human PE Kit

Plate 4

A	Blank	HLA-DR	igD	IL-28RA	integrin b5	KLRG1	LOX-1	MICA/MICB	MSC (W3D5)	Notch 2	TACSTD2
B	TIGIT	Mouse IgG2b, k isotype control	CCX-CKR	CD11c	CD129 (IL-9 R)	CD158	CD181 (CXCR1)	CD193 (CCR3)	CD196	CD1d	CD20
C	CD22	CD235ab	CD258 (LIGHT)	CD274 (B7-H1, PD-L1)	CD319 (CRACC)	CD32	CD326 (Ep-CAM)	CD338 (ABCG2)	CD368 (CLEC4D)	CD45RA	CD45RB
D	CD49e	CD52	CD85h (ILT1)	CD85j (ILT2)	CD86	CD92	CXCR7	Delta Opioid Receptor	Dopamine Receptor D1 (DRD1)	EphA2	FcεR1a
E	GARP (LRRC32)	IL-15Rα	MIRGx2	TMEM8A	CD254	CD318	Mouse IgG3, k isotype control	CD255 (TWEAK)	SSEA-4	Mouse IgM isotype control	SialVI Lewis X
F	TRA-1-81	CD57	CD66b	TRA-1-60-R	Rat IgG1, k isotype control	CD115	CD201 (EPCR)	Rat IgG2a, k isotype control	CD120b	CD210 (IL-10 R)	CD267 (TACI)
G	CD294	CD85a (ILT5)	CD85d (ILT4)	igG Fc	integrin b7	XCR1	Podoplanin	Rat IgG2b, k isotype control	CD132	CD195 (CCR5)	CX3CR1
H	Rat IgM, k isotype control	SSEA-3	Blank	Blank	Blank	Blank	Blank	Blank	Blank	Blank	Blank

Antibody information Tables
Plate 1

Well	Cat #	Clone	Description	Isotype
A1			Blank	
A2	400908	HTK888	Armenian Hamster IgG isotype control	Armenian Hamster IgG
A3	341504	6588-5	CCR10	Armenian Hamster IgG
A4	313508	C398.4A	CD278 (ICOS)	Armenian Hamster IgG
A5	308504	2HUB-159	IFN- γ R β chain	Hamster IgG
A6	400114	MOPC-21	Mouse IgG1, k isotype control	Mouse IgG1, k
A7	352402	TRA-2-10	CD46	Mouse IgG1
A8	355104	113-16	CD70	Mouse IgG1
A9	300106	HI149	CD1a	mouse IgG1, k
A10	300208	RPA-2.10	CD2	mouse IgG1, k
A11	316306	2M2	β 2-microglobulin	mouse IgG1, k
A12	358104	MIH43	B7-H4	mouse IgG1, k
B1	368704	16G5	Cadherin 11	mouse IgG1, k
B2	312204	HI10a	CD10	mouse IgG1, k
B3	328408	A8	CD100	mouse IgG1, k
B4	350206	Ber-ACT8	CD103	mouse IgG1, k
B5	800504	SN6h	CD105	mouse IgG1, k

Well	Cat #	Clone	Description	Isotype
E1	323006	W6D3	CD15	mouse IgG1, k
E2	306308	A12 (7D4)	CD150 (SLAM)	mouse IgG1, k
E3	350408	50-6	CD151	mouse IgG1, k
E4	310806	24-31	CD154	mouse IgG1, k
E5	352704	SHM14	CD156c (ADAM10)	mouse IgG1, k
E6	312708	DX9	CD158e1 (KIR3DL1, NKB1)	mouse IgG1, k
E7	302008	3G8	CD16	mouse IgG1, k
E8	339904	HP-3G10	CD161	mouse IgG1, k
E9	328806	KPL-1	CD162	mouse IgG1, k
E10	333606	GHI/61	CD163	mouse IgG1, k
E11	324808	67D2	CD164	mouse IgG1, k
E12	329010	SN2 (N6-D11)	CD165	mouse IgG1, k
F1	343904	3A6	CD166	mouse IgG1, k
F2	346004	7-239	CD169	mouse IgG1, k
F3	352004	1A5	CD170 (Siglec-5)	mouse IgG1, k
F4	323806	SE5A5	CD172a/b	mouse IgG1, k
F5	336606	LSB2.20	CD172g	mouse IgG1, k

LEGENDSCREEN™ Human PE Kit

Well	Cat #	Clone	Description	Isotype
B6	305806	STA	CD106	mouse IgG1, k
B7	328608	H4A3	CD107a (LAMP-1)	mouse IgG1, k
B8	354304	H4B4	CD107b (LAMP-2)	mouse IgG1, k
B9	323305	W7C5	CD109	mouse IgG1, k
B10	340404	R1.302	CD111	mouse IgG1, k
B11	337410	TX31	CD112 (Nectin-2)	mouse IgG1, k
B12	346106	LMM741	CD114	mouse IgG1, k
C1	305908	4H1	CD116	mouse IgG1, k
C2	313204	104D2	CD117 (c-kit)	mouse IgG1, k
C3	308606	GIR-208	CD119 (IFN- γ R α chain)	mouse IgG1, k
C4	301208	HI111	CD11a	mouse IgG1, k
C5	301306	ICRF44	CD11b	mouse IgG1, k
C6	339006	TU27	CD122	mouse IgG1, k
C7	306006	6H6	CD123	mouse IgG1, k
C8	352804	UV4	CD126 (IL-6R α)	mouse IgG1, k
C9	351304	A019D5	CD127 (IL-7R α)	mouse IgG1, k
C10	301704	WM15	CD13	mouse IgG1, k
C11	306104	1C1	CD131	mouse IgG1, k
C12	350004	Ber-ACT35 (ACT35)	CD134	mouse IgG1, k

Well	Cat #	Clone	Description	Isotype
F6	306407	NOK-1	CD178 (Fas-L)	mouse IgG1, k
F7	347404	HSL96	CD179a	mouse IgG1, k
F8	349804	HSL11	CD179b	mouse IgG1, k
F9	302108	TS1/18	CD18	mouse IgG1, k
F10	312906	MHR73-11	CD180 (RP105)	mouse IgG1, k
F11	320706	5E8/CXCR2	CD182 (CXCR2)	mouse IgG1, k
F12	353706	G025H7	CD183	mouse IgG1, k
G1	356904	J252D4	CD185	mouse IgG1, k
G2	302208	HIB19	CD19	mouse IgG1, k
G3	362904	5F10B29	CD191	mouse IgG1, k
G4	359412	L291H4	CD194	mouse IgG1, k
G5	329108	SN13 (K5-1B8)	CD1b	mouse IgG1, k
G6	331506	L161	CD1c	mouse IgG1, k
G7	329206	OX-104	CD200	mouse IgG1, k
G8	329306	OX-108	CD200 R	mouse IgG1, k
G9	334206	33.1 (Ab33)	CD202b (Tie2/Tek)	mouse IgG1, k
G10	324606	NP4D6	CD203c (E-NPP3)	mouse IgG1, k
G11	359204	HD83	CD205	mouse IgG1, k
G12	321106	15-2	CD206 (MMR)	mouse IgG1, k

LEGENDSCREEN™ Human PE Kit

Well	Cat #	Clone	Description	Isotype
D1	313306	BV10A4H2	CD135	mouse IgG1, k
D2	309804	4B4-1	CD137 (4-1BB)	mouse IgG1, k
D3	311504	5F4	CD137L (4-1BB Ligand)	mouse IgG1, k
D4	356504	MI15	CD138	mouse IgG1, k
D5	367104	63D3	CD14	mouse IgG1, k
D6	323506	16A1	CD140a	mouse IgG1, k
D7	323606	18A2	CD140b	mouse IgG1, k
D8	344104	M80	CD141	mouse IgG1, k
D9	365204	NV2	CD142	mouse IgG1, k
D10	344204	5-369	CD143	mouse IgG1, k
D11	361006	P1H12	CD146	mouse IgG1, k
D12	328708	A3	CD148	mouse IgG1, k

Well	Cat #	Clone	Description	Isotype
H1	352204	10E2	CD207 (Langerin)	mouse IgG1, k
H2	354904	Bu32	CD21	mouse IgG1, k
H3	360404	SS12B	CD213α1	mouse IgG1, k
H4	354404	SHM38	CD213α2	mouse IgG1, k
H5	313808	H44	CD218a (IL-18Rα)	mouse IgG1, k
H6	351806	1H7/CD221	CD221 (IGF-1R)	mouse IgG1, k
H7	369306	11C3C65	CD223	mouse IgG1, k
H8	338306	11A8	CD226 (DNAM-1)	mouse IgG1, k
H9	355604	16A	CD227	mouse IgG1, k
H10	326108	HLy-9.1.25	CD229 (Ly-9)	mouse IgG1, k
H11	338508	EBVCS-5	CD23	mouse IgG1, k
H12	329406	SN1a (M3-3D9)	CD231 (TALLA)	mouse IgG1, k

LEGENDSCREEN™ Human PE Kit

Plate 2

Well	Cat #	Clone	Description	Isotype
A1			Blank	
A2	329508	C1.7	CD244 (2B4)	mouse IgG1, k
A3	334403	DY12	CD245 (p220/240)	mouse IgG1, k
A4	356104	M-A251	CD25	mouse IgG1, k
A5	326308	11C3.1	CD252 (OX40L)	mouse IgG1, k
A6	307206	DJR1	CD261 (DR4, TRAIL-R1)	mouse IgG1, k
A7	307406	DJR2-4 (7-8)	CD262 (DR5, TRAIL-R2)	mouse IgG1, k
A8	307006	DJR3	CD263 (DrR1, TRAIL-R3)	mouse IgG1, k
A9	314004	ITEM-1	CD266 (Fn14, TWEAK Receptor)	mouse IgG1, k
A10	316906	11C1	CD268 (BAFF-R, BAFFR)	mouse IgG1, k
A11	356406	M-T271	CD27	mouse IgG1, k
A12	345106	ME20.4	CD271	mouse IgG1, k
B1	329806	9F.8A4	CD275 (B7-H2, B7-RP1, ICOSL)	mouse IgG1, k
B2	351004	MIH42	CD276	mouse IgG1, k
B3	342704	BT3.1	CD277	mouse IgG1, k
B4	329906	EH12.2H7	CD279 (PD-1)	mouse IgG1, k
B5	302908	CD28.2	CD28	mouse IgG1, k
B6	303004	TS2/16	CD29	mouse IgG1, k

Well	Cat #	Clone	Description	Isotype
E1	334308	5C3	CD40	mouse IgG1, k
E2	303706	HIP8	CD41	mouse IgG1, k
E3	303906	HIP1	CD42b	mouse IgG1, k
E4	343204	CD43-10G7	CD43	mouse IgG1, k
E5	338808	BJ18	CD44	mouse IgG1, k
E6	304008	HI30	CD45	mouse IgG1, k
E7	323108	CC2C6	CD47	mouse IgG1, k
E8	336708	BJ40	CD48	mouse IgG1, k
E9	328304	TS2/7	CD49a	mouse IgG1, k
E10	359308	P1E6-C5	CD49b	mouse IgG1, k
E11	343803	ASC-1	CD49c	mouse IgG1, k
E12	304304	9F10	CD49d	mouse IgG1, k
F1	300608	UCHT2	CD5	mouse IgG1, k
F2	330005	CBR-IC3/1	CD50 (ICAM-3)	mouse IgG1, k
F3	353106	HA58	CD54	mouse IgG1, k
F4	311308	JS11	CD55	mouse IgG1, k
F5	362508	5.1H11	CD56	mouse IgG1, k
F6	330905	TS2/9	CD58	mouse IgG1, k

LEGENDSCREEN™ Human PE Kit

Well	Cat #	Clone	Description	Isotype
B7	354604	3C10C5	CD290	mouse IgG1, k
B8	341704	LNH-94	CD298	mouse IgG1, k
B9	300408	UCHT1	CD3	mouse IgG1, k
B10	333906	BY88	CD30	mouse IgG1, k
B11	334804	TX45	CD300c	mouse IgG1, k
B12	359904	7D4-6	CD309/VEGFR 2	mouse IgG1, k
C1	303106	WM59	CD31	mouse IgG1, k
C2	320806	1D11	CD314 (NKG2D)	mouse IgG1, k
C3	348406	RS38E	CD317	mouse IgG1, k
C4	324106	67A4	CD324 (E-Cadherin)	mouse IgG1, k
C5	350805	8C11	CD325	mouse IgG1, k
C6	339204	6-434	CD328 (Siglec-7)	mouse IgG1, k
C7	303404	WM53	CD33	mouse IgG1, k
C8	324306	4FR6D3	CD334 (FGFR4)	mouse IgG1, k
C9	331908	9E2	CD335 (NKP46)	mouse IgG1, k
C10	325108	P44-8	CD336 (NKP44)	mouse IgG1, k
C11	325208	P30-15	CD337 (NKP30)	mouse IgG1, k
C12	343506	581	CD34	mouse IgG1, k
D1	324406	24D2	CD340 (erbB2/HER-2)	mouse IgG1, k

Well	Cat #	Clone	Description	Isotype
F7	313906	BL-CD6	CD6	mouse IgG1, k
F8	336406	VI-PL2	CD61	mouse IgG1, k
F9	336008	HAE-1f	CD62E	mouse IgG1, k
F10	304806	DREG-56	CD62L	mouse IgG1, k
F11	304906	AK4	CD62P (P-Selectin)	mouse IgG1, k
F12	353004	H5C6	CD63	mouse IgG1, k
G1	305008	10.1	CD64	mouse IgG1, k
G2	310906	FN50	CD69	mouse IgG1, k
G3	344004	AD2	CD73	mouse IgG1, k
G4	326808	LN2	CD74	mouse IgG1, k
G5	341404	CB3-1	CD79b	mouse IgG1, k
G6	344706	SK1	CD8	mouse IgG1, k
G7	305208	2D10	CD80	mouse IgG1, k
G8	349506	5A6	CD81	mouse IgG1, k
G9	342104	ASL-24	CD82	mouse IgG1, k
G10	305308	HB15e	CD83	mouse IgG1, k
G11	326408	17G10.2	CD85g (ILT7)	mouse IgG1, k
G12	333008	ZM4.1	CD85k (ILT3)	mouse IgG1, k
H1	336906	VIM5	CD87	mouse IgG1, k

LEGENDSCREEN™ Human PE Kit

Well	Cat #	Clone	Description	Isotype
D2	326606	CH3A4A7	CD344 (Frizzled-4)	mouse IgG1, k
D3	333406	E11	CD35	mouse IgG1, k
D4	314906	TREM-26	CD354 (TREM-1)	mouse IgG1, k
D5	359506	17A12	CD360	mouse IgG1, k
D6	353904	1D12	CD365 (Tim-1)	mouse IgG1, k
D7	345006	F38-2E2	CD366 (Tim-3)	mouse IgG1, k
D8	355306	9E8	CD367 (CLEC4A)	mouse IgG1, k
D9	363204	m1b9	CD36L1	mouse IgG1, k
D10	303506	HIT2	CD38	mouse IgG1, k
D11	328208	A1	CD39	mouse IgG1, k
D12	300508	RPA-T4	CD4	mouse IgG1, k

Well	Cat #	Clone	Description	Isotype
H2	354104	A59	CD89	mouse IgG1, k
H3	301008	RPA-T8	CD8a	mouse IgG1, k
H4	312106	HI9a	CD9	mouse IgG1, k
H5	328110	5E10	CD90 (Thy1)	mouse IgG1, k
H6	336108	VIMD2	CD93	mouse IgG1, k
H7	305506	DX22	CD94	mouse IgG1, k
H8	305608	DX2	CD95	mouse IgG1, k
H9	338406	NK92.39	CD96	mouse IgG1, k
H10	336308	VIM3b	CD97	mouse IgG1, k
H11	371306	3B2/TA8	CD99	mouse IgG1, k
H12	360804	22-19-12	CXCL16	mouse IgG1, k

LEGENDSCREEN™ Human PE Kit

Plate 3

Well	Cat #	Clone	Description	Isotype
A1			Blank	
A2	346404	MHD1-314	DLL1	mouse IgG1, k
A3	346506	MHD4-46	DLL4	mouse IgG1, k
A4	307106	JD3	DR3 (TRAMP)	mouse IgG1, k
A5	352904	AY13	EGFR	mouse IgG1, k
A6	371204	108-17	GiTR	mouse IgG1, k
A7	357004	K152D10	GPR19	mouse IgG1, k
A8	358204	CG4	GPR56	mouse IgG1, k
A9	342604	3D12	HLA-E	mouse IgG1, k
A10	318806	122	HVEM (TR2)	mouse IgG1, k
A11	316508	MHK-49	Ig light chain k	mouse IgG1, k
A12	314508	MHM-88	IgM	mouse IgG1, k
B1	347806	2G1-K12	IL-21R	mouse IgG1, k
B2	351606	Y9A2	Integrin α9β1	mouse IgG1, k
B3	346904	MHJ2-523	Jagged 2	mouse IgG1, k
B4	346603	TDA3	Ksp37	mouse IgG1, k
B5	349604	TW4-2F8	LAP	mouse IgG1, k
B6	367004	13.8	LY6G6D	mouse IgG1, k

Well	Cat #	Clone	Description	Isotype
E1	344506	MIH26	BTLA	mouse IgG2a, k
E2	360604	L263G8	CCR8	mouse IgG2a, k
E3	358304	K097F7	CCRL2	mouse IgG2a, k
E4	328506	CBR-1C2/2	CD102	mouse IgG2a, k
E5	327808	58XB4	CD104	mouse IgG2a, k
E6	355004	G077F6	CD124	mouse IgG2a, k
E7	362004	2E1B02	CD130	mouse IgG2a, k
E8	348506	BV9	CD144	mouse IgG2a, k
E9	369604	BNI3	CD152 (CTLA-4)	mouse IgG2a, k
E10	337508	TX24	CD155 (PVR)	mouse IgG2a, k
E11	312606	DX27	CD158b (KIR2DL2/L3, NKAT2)	mouse IgG2a, k
E12	306506	12G5	CD184 (CXCR4)	mouse IgG2a, k
F1	356004	K041E5	CD186	mouse IgG2a, k
F2	357206	K036C2	CD192	mouse IgG2a, k
F3	353204	G043H7	CD197 (CCR7)	mouse IgG2a, k
F4	358904	L053E8	CD199	mouse IgG2a, k
F5	330106	9E9A8	CD209 (DC-SIGN)	mouse IgG2a, k
F6	372304	W15177A	CD217	mouse IgG2a, k

LEGENDSCREEN™ Human PE Kit

Well	Cat #	Clone	Description	Isotype
B7	367608	590H11G1E 3	MERTK	mouse IgG1, k
B8	327606	W7C6	MSC (W7C6)	mouse IgG1, k
B9	330806	W4A5	MSC and NPC (W4A5)	mouse IgG1, k
B10	327306	W8B2	MSCA-1 (MSC, W8B2)	mouse IgG1, k
B11	363904	TCC16	MUC-13	mouse IgG1, k
B12	346706	5D12	NKp80	mouse IgG1, k
C1	352106	MHN1-519	Notch 1	mouse IgG1, k
C2	345406	MHN3-21	Notch 3	mouse IgG1, k
C3	349004	MHN4-2	Notch 4	mouse IgG1, k
C4	327706	57D2	NPC (57D2)	mouse IgG1, k
C5	317208	NT-7	NTB-A (NTBA)	mouse IgG1, k
C6	342504	LNI-17	PSMA	mouse IgG1, k
C7	357804	2A2	ROR1	mouse IgG1, k
C8	347604	5G6	Siglec-10	mouse IgG1, k
C9	347703	S7.7	Siglec-7	mouse IgG1, k
C10	347104	7C9	Siglec-8	mouse IgG1, k
C11	351504	K8	Siglec-9	mouse IgG1, k
C12	355204	8E11	SSEA-5	mouse IgG1, k
D1	327406	W5C5	SUSD2	mouse IgG1, k

Well	Cat #	Clone	Description	Isotype
F7	800318	3F4	CD230 (Prion)	mouse IgG2a, k
F8	311106	ML5	CD24	mouse IgG2a, k
F9	348606	UIC2	CD243	mouse IgG2a, k
F10	302706	BA5b	CD26	mouse IgG2a, k
F11	357504	19F2	CD269	mouse IgG2a, k
F12	309708	TL2.1	CD282 (TLR2)	mouse IgG2a, k
G1	312806	HTA125	CD284 (TLR4)	mouse IgG2a, k
G2	354704	H037G3	CD301	mouse IgG2a, k
G3	354204	201A	CD303	mouse IgG2a, k
G4	354504	12C2	CD304	mouse IgG2a, k
G5	340304	509f6	CD307	mouse IgG2a, k
G6	356704	SHM33	CD323	mouse IgG2a, k
G7	371204	108-17	CD357 (GITR)	mouse IgG2a, k
G8	336206	5-271	CD36	mouse IgG2a, k
G9	355404	15E2	CD369 (Dectin- 1/CLEC7A)	mouse IgG2a, k
G10	353804	8F9	CD370 (CLEC9A/DN GR1)	mouse IgG2a, k
G11	353604	50C1	CD371 (CLEC12A)	mouse IgG2a, k
G12	304206	UCHL1	CD45RO	mouse IgG2a, k
H1	327910	NKI-M9	CD51	mouse IgG2a, k

LEGENDSCREEN™ Human PE Kit

Well	Cat #	Clone	Description	Isotype
D2	306708	IP26	TCR a/β	mouse IgG1, k
D3	331210	B1	TCR g/d	mouse IgG1, k
D4	354004	9F4	Tim-4	mouse IgG1, k
D5	351104	MIH61	TLT-2	mouse IgG1, k
D6	367204	C9	TM4SF20	mouse IgG1, k
D7	358704	TRA-2-49/6E	TRA-2-49	mouse IgG1, k
D8	358804	TRA-2-54/2J	TRA-2-54	mouse IgG1, k
D9	322806	1B4	TSLPR (TSLP-R)	mouse IgG1, k
D10	356204	9D9F9	VEGFR3	mouse IgG1, k
D11	400214	MOPC-173	Mouse IgG2a, k isotype control	mouse IgG2a, k
D12	367304	7.13	APCDD1	mouse IgG2a, k

Well	Cat #	Clone	Description	Isotype
H2	304708	p282 (H19)	CD59	mouse IgG2a, k
H3	343106	CD7-6B7	CD7	mouse IgG2a, k
H4	334106	CY1G4	CD71	mouse IgG2a, k
H5	326008	CD84.1.21	CD84	mouse IgG2a, k
H6	344304	S5/1	CD88	mouse IgG2a, k
H7	339106	Cr24.1	CRTAM	mouse IgG2a, k
H8	324706	1B4C3	erbB3/HER-3	mouse IgG2a, k
H9	357704	K102B9	FPR3	mouse IgG2a, k
H10	357304	14G2a	Ganglioside GD2	mouse IgG2a, k
H11	363306	K07JP05	GPR83	mouse IgG2a, k
H12	311406	W6/32	HLA-A,B,C	mouse IgG2a, k

LEGENDSCREEN™ Human PE Kit

Plate 4

Well	Cat #	Clone	Description	Isotype
A1			Blank	
A2	307606	L243	HLA-DR	mouse IgG2a, k
A3	316608	MHL-38	Ig light chain λ	mouse IgG2a, k
A4	348204	IA6-2	IgD	mouse IgG2a, k
A5	337804	MHLICR2a	IL-28RA	mouse IgG2a, k
A6	345203	AST-3T	integrin b5	mouse IgG2a, k
A7	367712	SA231A2	KLRG1	mouse IgG2a, k
A8	358604	15C4	LOX-1	mouse IgG2a, k
A9	320906	6D4	MICA/MICB	mouse IgG2a, k
A10	327506	W3D5	MSC (W3D5)	mouse IgG2a, k
A11	348304	MHN2-25	Notch 2	mouse IgG2a, k
A12	363804	NY18	TACSTD2	mouse IgG2a, k
B1	372704	A15153G	TIGIT	mouse IgG2a, k
B2	400314	MPC-11	Mouse IgG2b, k Isotype Control	mouse IgG2b, k
B3	345804	hC3aR28	C3AR	mouse IgG2b, k
B4	362104	13E11	CCX-CR1	mouse IgG2b, k
B5	371504	S-HCL-3	CD11c	mouse IgG2b, k
B6	310404	AH9R7	CD129 (IL-9 R)	mouse IgG2b, k

Well	Cat #	Clone	Description	Isotype
E1	352504	7B11	GARP (LRRC32)	mouse IgG2b, k
E2	330208	JM7A4	IL-15R α	mouse IgG2b, k
E3	322008	31G4D8	Lymphotoxin β Receptor (LT- β R)	mouse IgG2b, k
E4	359004	K125H4	MRGX2	mouse IgG2b, k
E5	370806	SA065C3	TMEM8A	mouse IgG2b, k
E6	347504	MIH24	CD254	mouse IgG2b, k
E7	324006	CUB1	CD318	mouse IgG2b, k
E8	401320	MG3-35	Mouse IgG3, k isotype control	mouse IgG3, k
E9	308305	CARL-1	CD255 (TWEAK)	Mouse IgG3, k
E10	330406	MC-813-70	SSEA-4	Mouse IgG3, k
E11	401609	MM-30	Mouse IgM isotype control	Mouse IgM, k
E12	368108	FH6	Sialyl Lewis X	Mouse IgM, k
F1	330708	TRA-1-81	TRA-1-81	Mouse IgM, k
F2	341206	BY55	CD160	Mouse IgM, k
F3	359612	HNK-1	CD57	Mouse IgM, k
F4	305106	G10F5	CD66b	Mouse IgM, k
F5	330610	TRA-1-60-R	TRA-1-60-R	Mouse IgM, k
F6	400408	RTK2071	Rat IgG1, k isotype control	Rat IgG1, k

LEGENDSCREEN™ Human PE Kit

Well	Cat #	Clone	Description	Isotype
B7	339506	HP-MA4	CD158	mouse IgG2b, k
B8	320608	8F1/CXCR1	CD181 (CXCR1)	mouse IgG2b, k
B9	310706	5E8	CD193 (CCR3)	mouse IgG2b, k
B10	353410	G034E3	CD196	mouse IgG2b, k
B11	350306	51.1	CD1d	mouse IgG2b, k
B12	302306	2H7	CD20	mouse IgG2b, k
C1	363504	S-HCL-1	CD22	mouse IgG2b, k
C2	352604	B6.220	CD220	mouse IgG2b, k
C3	306604	HIR2	CD235ab	mouse IgG2b, k
C4	318706	T5-39	CD258 (LIGHT)	mouse IgG2b, k
C5	329706	29E.2A3	CD274 (B7-H1, PD-L1)	mouse IgG2b, k
C6	331806	162.1	CD319 (CRACC)	mouse IgG2b, k
C7	303206	FUN-2	CD32	mouse IgG2b, k
C8	324206	9C4	CD326 (EPCAM)	mouse IgG2b, k
C9	332008	5D3	CD338 (ABCG2)	mouse IgG2b, k
C10	360204	989	CD368 (CLEC4D)	mouse IgG2b, k
C11	304108	HI100	CD45RA	mouse IgG2b, k
C12	310204	MEM-55	CD45RB	mouse IgG2b, k
D1	328010	NKI-SAM-1	CD49e	mouse IgG2b, k

Well	Cat #	Clone	Description	Isotype
F7	347304	9-4D2-1E4	CD115	Rat IgG1, k
F8	351904	RCR-401	CD201 (EPCR)	Rat IgG1, k
F9	400508	RTK2758	Rat IgG2a, k isotype control	Rat IgG2a, k
F10	358404	3G7A02	CD120b	Rat IgG2a, k
F11	308804	3F9	CD210 (IL-10 R)	Rat IgG2a, k
F12	311906	1A1	CD267 (TAC1)	Rat IgG2a, k
G1	350106	BM16	CD294	Rat IgG2a, k
G2	313612	GoH3	CD49f	Rat IgG2a, k
G3	337704	MKT5.1	CD85a (ILT5)	Rat IgG2a, k
G4	338706	42D1	CD85d (ILT4)	Rat IgG2a, k
G5	410708	M1310G05	IgG Fc	Rat IgG2a, k
G6	321204	FIB504	integrin b7	Rat IgG2a, k
G7	372604	S15046E	XCR1	Rat IgG2a, k
G8	337004	NC-08	Podoplanin	Rat IgG2a, l
G9	400636	RTK4530	Rat IgG2b, k isotype control	Rat IgG2b, k
G10	338606	TUGh4	CD132	Rat IgG2b, k
G11	359106	J418F1	CD195 (CCR5)	Rat IgG2b, k
G12	341604	2A9-1	CX3CR1	Rat IgG2b, k
H1	400808	RTK2118	Rat IgM, k isotype control	Rat IgM, k

LEGENDSCREEN™ Human PE Kit

Well	Cat #	Clone	Description	Isotype
D2	316006	HI186	CD52	mouse IgG2b, k
D3	342304	ASL-32	CD66a/c/e	mouse IgG2b, k
D4	337904	24	CD85h (ILT1)	mouse IgG2b, k
D5	333708	GHI/75	CD85j (ILT2)	mouse IgG2b, k
D6	305406	IT2.2	CD86	mouse IgG2b, k
D7	371404	VIM15b	CD92	mouse IgG2b, k
D8	331104	8F11-M16	CXCR7	mouse IgG2b, k
D9	327206	DOR7D2A4	Delta Opioid Receptor	mouse IgG2b, k
D10	366404	L205G1	Dopamine Receptor D1 (DRD1)	mouse IgG2b, k
D11	356804	SHM16	EphA2	mouse IgG2b, k
D12	334610	AER-37 (CRA-1)	FceR1a	mouse IgG2b, k

Well	Cat #	Clone	Description	Isotype
H2	330312	MC-631	SSEA-3	Rat IgM, k
H3			Blank	
H4			Blank	
H5			Blank	
H6			Blank	
H7			Blank	
H8			Blank	
H9			Blank	
H10			Blank	
H11			Blank	
H12			Blank	

LEGENDSCREEN™ Human PE Kit



LEGENDScreen™ Kits are manufactured by **BioLegend Inc.**
9727 Pacific Heights Blvd.
San Diego, CA 92121
Tel: 1.858.768.5800
Tel: US & Canada Toll-Free: 1.877.Bio-Legend (1.877.246.5343)
Fax: 1.877.455.9587
Email: info@biolegend.com
biolegend.com

For a complete list of world-wide BioLegend offices and distributors,
please visit our website at: biolegend.com

700007 V1