

## GMP APC anti-human CD1a Antibody

<b>Catalog# / Size</b>	260348 / 100 tests
<b>Clone</b>	SK9
<b>Other Names</b>	T6, R4, Leu-6
<b>Isotype</b>	Mouse IgG2b, $\kappa$
<b>Description</b>	CD1a is a 49 kD member of the immunoglobulin superfamily also known as T6 and R4. It is a type I membrane glycoprotein with structural similarities to MHC class I and is non-covalently associated with $\beta$ 2-microglobulin. CD1a plays a role in non-peptide glycolipid antigen presentation to CD1-restricted T cells. It is expressed on cortical double positive and single positive thymocytes, Langerhans cells, and dendritic cells. In addition to antigen presentation, CD1a has been implicated in thymic T cell development.

### Product Details

---

<b>Reactivity</b>	Human
<b>Antibody Type</b>	Monoclonal
<b>Host Species</b>	Mouse
<b>Formulation</b>	Phosphate-buffered solution, pH 7.2, containing 0.09% sodium azide and 0.2% (w/v) BSA (origin USA) and a stabilizer
<b>Preparation</b>	The antibody was purified by affinity chromatography and conjugated with APC under optimal conditions.
<b>Concentration</b>	400 $\mu$ g/mL
<b>Storage &amp; Handling</b>	The antibody solution should be stored undiluted between 2°C and 8°C, and protected from prolonged exposure to light. <b>Do not freeze.</b>
<b>Application</b>	<a href="#">FC - Quality tested</a>
<b>Recommended Usage</b>	Each lot of this antibody is quality control tested by <a href="#">immunofluorescent staining with flow cytometric analysis</a> . For flow cytometric staining, the suggested use of this reagent is 5 $\mu$ L per million cells in 100 $\mu$ L staining volume or 5 $\mu$ L per 100 $\mu$ L of whole blood. It is recommended that the reagent be titrated for optimal performance for each application.
<b>Excitation Laser</b>	Red Laser (633 nm)
<b>Application Notes</b>	Additional reported application (for the relevant formats) includes: immunoprecipitation and immunohistochemical staining of frozen sections. <sup>2</sup>
<b>Application References</b>	1. Wood GS, <i>et al.</i> 1983. <i>J. Immunol.</i> 131:212. 2. Facy V, <i>et al.</i> 2005. <i>Toxicol in Vitro.</i> 6:787-95.
<b>(PubMed link indicates BioLegend citation)</b>	
<b>Disclaimer</b>	<b>GMP RUO Flow Cytometry Antibodies.</b> BioLegend GMP RUO fluorophore conjugated antibodies are manufactured in a dedicated GMP facility and compliant with ISO 13485:2016. For research use only. Not for use in diagnostic or therapeutic procedures. Our processes include: <ul style="list-style-type: none"><li>• Batch-to-batch consistency</li><li>• Material traceability</li><li>• Documented procedures</li><li>• Documented employee training</li><li>• Equipment maintenance and monitoring records</li><li>• Lot-specific certificates of analysis</li><li>• Quality audits per ISO 13485:2016</li><li>• QA review of released products</li></ul>

## Antigen Details

---

<b>Structure</b>	Ig superfamily, MHC I-like molecule, type I transmembrane glycoprotein, 49 kD
<b>Distribution</b>	Cortical thymocytes, Langerhans cells, dendritic cells
<b>Function</b>	Antigen presentation, lymphocyte activation, thymic T cell development
<b>Ligand/Receptor</b>	CD1-restricted TCRs
<b>Cell Type</b>	Dendritic cells, Langerhans cells, Thymocytes
<b>Biology Area</b>	Immunology, Innate Immunity
<b>Molecular Family</b>	CD Molecules, TCRs
<b>Antigen References</b>	1. Wood GS, <i>et al.</i> 1983. <i>J. Immunol.</i> 131:212. 2. Wood GS, <i>et al.</i> 1985. <i>Am. J. Pathol.</i> 120:371. 3. Martin LH, <i>et al.</i> 1987. <i>P. Natl. Acad. Sci. USA</i> 84:9189.
<b>Gene ID</b>	<a href="#">909</a>

## Related Protocols

---

[Cell Surface Flow Cytometry Staining Protocol](#)

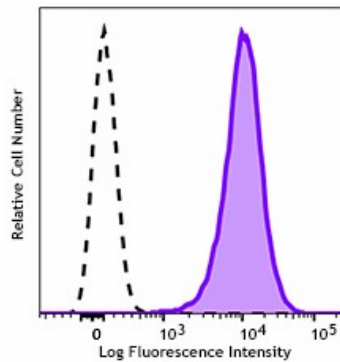
## Other Formats

---

Purified anti-human CD1a, PE anti-human CD1a, APC anti-human CD1a

## Product Data

---



Typical results from human T-cell lymphoblastic leukemia cell line Molt-4 stained either with SK9 APC used at 5  $\mu$ L/test (filled histogram) or with an isotype control (open histogram).

For research use only. Not for resale. BioLegend will not be held responsible for patent infringement or other violations that may occur with the use of our products.

\*These products may be covered by one or more Limited Use Label Licenses (see the BioLegend Catalog or our website, [www.biolegend.com/ordering#license](http://www.biolegend.com/ordering#license)). BioLegend products may not be transferred to third parties, resold, modified for resale, or used to manufacture commercial products, reverse engineer functionally similar materials, or to provide a service to third parties without written approval of BioLegend. By use of these products you accept the terms and conditions of all applicable Limited Use Label Licenses.

8999 BioLegend Way, San Diego, CA 92121 [www.biolegend.com](http://www.biolegend.com)  
Toll-Free Phone: 1-877-Bio-Legend (246-5343) Phone: (858) 768-5800 Fax: (877) 455-9587