

GMP PE anti-human CD103 (Integrin α E) Antibody

Catalog# / Size	260330 / 100 tests
Clone	Ber-ACT8
Workshop	V A067
Other Names	Integrin alpha E (ITGAE)
Isotype	Mouse IgG1, κ
Description	CD103 is a type I transmembrane glycoprotein also known as α E integrin, integrin α EL chain, and human mucosal lymphocyte antigen 1. It belongs to the integrin family and is primarily found on intestinal intraepithelial lymphocytes (IEL). CD103 is also expressed on a subpopulation of lamina propria T cells, epithelial dendritic cells, lamina propria-derived dendritic cells, and a small subset of peripheral lymphocytes. Treg cells express high level of CD103. Hairy cell leukemia has also been shown to express CD103. The expression of CD103 on lymphocytes can be induced upon activation and TGF- β stimulation. In association with integrin β 7, CD103 is expressed as an α E/ β 7 heterodimer. Mature CD103 protein can be cleaved into 2 chains, a 150 kD (C-terminal) chain and a 25 kD (N-terminal) chain, which remain linked by disulfide bonds. CD103 binds to E-cadherin and mediates homing of lymphocytes to the intestinal epithelium.

Product Details

Reactivity	Human
Reported Reactivity	Cynomolgus
Antibody Type	Monoclonal
Host Species	Mouse
Immunogen	HTLV-1 induced human T cell line MAPS16
Formulation	Phosphate-buffered solution, pH 7.2, containing 0.09% sodium azide and 0.2% (w/v) BSA (origin USA) and a stabilizer
Preparation	The antibody was purified by affinity chromatography and conjugated with PE under optimal conditions.
Concentration	12 μ g/mL
Storage & Handling	The antibody solution should be stored undiluted between 2°C and 8°C, and protected from prolonged exposure to light. Do not freeze.
Application	FC - Quality tested
Recommended Usage	Each lot of this antibody is quality control tested by immunofluorescent staining with flow cytometric analysis . For flow cytometric staining, the suggested use of this reagent is 5 μ L per million cells in 100 μ L staining volume or 5 μ L per 100 μ L of whole blood. It is recommended that the reagent be titrated for optimal performance for each application.
Excitation Laser	Blue Laser (488 nm) Green Laser (532 nm)/Yellow-Green Laser (561 nm)
Application Notes	Additional reported applications (for the relevant formats) include: Western Blotting ¹ , immunoprecipitation ¹ , and immunohistochemical staining of frozen tissue sections ¹ .
Application References	1. Kruschwitz M, <i>et al.</i> 1991. <i>J. Clin. Pathol.</i> 44:636. (WB, IP, IHC-F) 2. Yoshino N, <i>et al.</i> 2000. <i>Exp. Anim. (Tokyo)</i> 49:97. (FC)
(PubMed link indicates BioLegend citation)	
Disclaimer	GMP RUO Flow Cytometry Antibodies. BioLegend GMP RUO fluorophore conjugated antibodies are manufactured in a dedicated GMP facility and compliant with ISO 13485:2016. For research use only. Not for use in diagnostic or therapeutic procedures. Our processes include:

- Batch-to-batch consistency
- Material traceability
- Documented procedures
- Documented employee training
- Equipment maintenance and monitoring records
- Lot-specific certificates of analysis
- Quality audits per ISO 13485:2016
- QA review of released products

Antigen Details

Structure	Type I transmembrane glycoprotein, integrin family; can be cleaved into 150 kD and 25 kD chains; associated with $\beta 7$ integrin
Distribution	Majority of intestinal intraepithelial lymphocytes (IEL), subpopulation of lamina propria T cells, epithelial dendritic cells, small subset of peripheral lymphocytes, Treg cells; expressed on hairy cell leukemia
Function	Retention and activation of CD103 ⁺ lymphocytes in the intestinal epithelium, regulation of tissue-specific T cell homing
Ligand/Receptor	E-Cadherin
Cell Targets	Integrin $\beta 7$
Cell Type	Dendritic cells, Lymphocytes, T cells, Tregs
Biology Area	Cell Biology, Immunology, Neuroscience, Synaptic Biology
Molecular Family	Adhesion Molecules, CD Molecules
Antigen References	<ol style="list-style-type: none"> 1. Parker CM, <i>et al.</i> 1992. <i>P. Natl. Acad. Sci. USA</i> 89:1924. 2. Kruschwitz M, <i>et al.</i> 1991. <i>J. Clin. Pathol.</i> 44:636. 3. Schon MP, <i>et al.</i> 1999. <i>J. Immunol.</i> 162:6641. 4. Shaw SK, <i>et al.</i> 1994. <i>J. Biol. Chem.</i> 269:6016.
Gene ID	3682

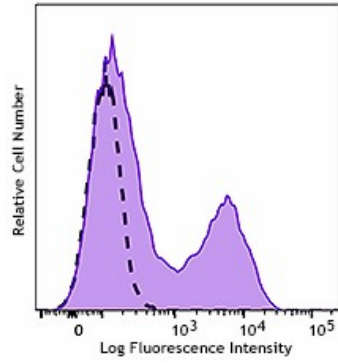
Related Protocols

[Cell Surface Flow Cytometry Staining Protocol](#)

Other Formats

Purified anti-human CD103 (Integrin αE), FITC anti-human CD103 (Integrin αE), PE anti-human CD103 (Integrin αE), Alexa Fluor® 488 anti-human CD103 (Integrin αE), Alexa Fluor® 647 anti-human CD103 (Integrin αE), PE/Cyanine7 anti-human CD103 (Integrin αE), Brilliant Violet 421™ anti-human CD103 (Integrin αE), APC anti-human CD103 (Integrin αE), Brilliant Violet 605™ anti-human CD103 (Integrin αE), Biotin anti-human CD103 (Integrin αE), Brilliant Violet 711™ anti-human CD103 (Integrin αE), PE/Dazzle™ 594 anti-human CD103 (Integrin αE), PerCP/Cyanine5.5 anti-human CD103 (Integrin αE), Brilliant Violet 785™ anti-human CD103 (Integrin αE), APC/Cyanine7 anti-human CD103 (Integrin αE), TotalSeq™-A0145 anti-human CD103 (Integrin αE), TotalSeq™-C0145 anti-human CD103 (Integrin αE), TotalSeq™-B0145 anti-human CD103 (Integrin αE), APC/Fire™ 750 anti-human CD103 (Integrin αE), PE/Fire™ 700 anti-human CD103 (Integrin αE) Antibody, TotalSeq™-D0145 anti-human CD103 (Integrin αE), PE/Fire™ 640 anti-human CD103 (Integrin αE), PE anti-human CD103, FITC anti-human CD103, APC anti-human CD103

Product Data



Typical result of PHA-stimulated (3 days) human peripheral blood lymphocytes stained either with Ber-ACT8 PE used at 5 µL/test (filled histogram) or with an isotype control (open histogram).

For research use only. Not for resale. BioLegend will not be held responsible for patent infringement or other violations that may occur with the use of our products.

*These products may be covered by one or more Limited Use Label Licenses (see the BioLegend Catalog or our website, www.biolegend.com/ordering#license). BioLegend products may not be transferred to third parties, resold, modified for resale, or used to manufacture commercial products, reverse engineer functionally similar materials, or to provide a service to third parties without written approval of BioLegend. By use of these products you accept the terms and conditions of all applicable Limited Use Label Licenses.

8999 BioLegend Way, San Diego, CA 92121 www.biolegend.com
Toll-Free Phone: 1-877-Bio-Legend (246-5343) Phone: (858) 768-5800 Fax: (877) 455-9587