

GMP FITC anti-human CD23 Antibody

Catalog# / Size	260242 / 100 tests
Clone	EBVCS-5
Other Names	Leu-20, FcεRII, IgE Fc Receptor, BLAST-2, B6, Low affinity IgE receptor
Isotype	Mouse IgG1, κ
Description	CD23 is a 45 kD protein, also known as Leu-20, FcεRII, IgE Fc receptor, BLAST-2, B6, and low affinity IgE receptor. It is a member of the Ig family, expressed on most mature B cells, B cells in follicular mantle (but not in proliferating germinal center cells, follicular dendritic cells, monocytes, eosinophils, Langerhans cells, and a subset of T cells (10-15% of tonsillar T cells). CD23 responds to high levels of IgE by downregulating IgE secretion. In human monocytes, CD23 triggering results in release of pro-inflammatory cytokines including TNF-α, IL-1, IL-6, and GM-CSF. CD23 can be proteolytically cleaved to generate soluble CD23 fragments of various molecular weights. In chronic lymphocytic leukemia, levels of soluble CD23 in the serum can be used as a prognostic marker to identify patients at high risk for disease progression. Alternate splicing of exon 2 can also generate two cell-surface isoforms of CD23 differing by 6 amino acids in their cytoplasmic region.

Product Details

Reactivity	Human
Antibody Type	Monoclonal
Host Species	Mouse
Formulation	Phosphate-buffered solution, pH 7.2, containing 0.09% sodium azide and 0.2% (w/v) BSA (origin USA).
Preparation	The antibody was purified by affinity chromatography and conjugated with FITC under optimal conditions.
Concentration	200 µg/mL
Storage & Handling	The antibody solution should be stored undiluted between 2°C and 8°C, and protected from prolonged exposure to light. Do not freeze.
Application	FC - Quality tested
Recommended Usage	Each lot of this antibody is quality control tested by immunofluorescent staining with flow cytometric analysis . For flow cytometric staining, the suggested use of this reagent is 5 µL per million cells in 100 µL staining volume or 5 µL per 100 µL of whole blood. It is recommended that the reagent be titrated for optimal performance for each application.
Excitation Laser	Blue Laser (488 nm)
Application References	1. Sugden B and Metzberg S. 1983. <i>J. Virol.</i> 46:800-807.
(PubMed link indicates BioLegend citation)	
Disclaimer	<p>GMP RUO Flow Cytometry Antibodies. BioLegend GMP RUO fluorophore conjugated antibodies are manufactured in a dedicated GMP facility and compliant with ISO 13485:2016. For research use only. Not for use in diagnostic or therapeutic procedures. Our processes include:</p> <ul style="list-style-type: none"> • Batch-to-batch consistency • Material traceability • Documented procedures • Documented employee training • Equipment maintenance and monitoring records • Lot-specific certificates of analysis • Quality audits per ISO 13485:2016 • QA review of released products

Antigen Details

Structure	Ig family member, type II transmembrane glycoprotein, 45 kD
Distribution	B cells, follicular dendritic cells, monocytes, eosinophils, a subset of T cells, Langerhans cells
Function	Regulation of IgE synthesis in human monocytes; CD23 triggering results in release of pro-inflammatory cytokines including TNF- α , IL-1, IL-6, and GM-CSF
Ligand/Receptor	IgE, CD19/CD21/CD81
Cell Type	B cells, Dendritic cells, Eosinophils, Langerhans cells, Monocytes, T cells
Biology Area	Immunology
Molecular Family	CD Molecules, Fc Receptors
Antigen References	<ol style="list-style-type: none">1. Ludin C, <i>et al.</i> 1987. <i>EMBO J.</i> 6:109.2. Delespesse G, <i>et al.</i> 1992. <i>Immunol. Rev.</i> 125:77.3. Flores-Romo L, <i>et al.</i> 1993. <i>Science</i> 261:1038.4. Armant M, <i>et al.</i> 1994. <i>J. Exp. Med.</i> 180:1005.
Gene ID	2208

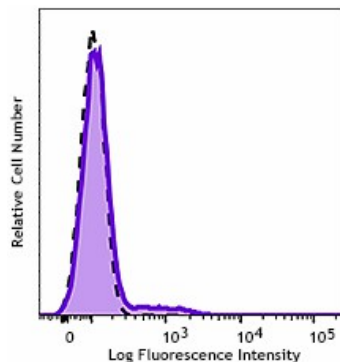
Related Protocols

[Cell Surface Flow Cytometry Staining Protocol](#)

Other Formats

Purified anti-human CD23, FITC anti-human CD23, PE anti-human CD23, APC anti-human CD23, PE/Cyanine7 anti-human CD23, PerCP/Cyanine5.5 anti-human CD23, APC/Cyanine7 anti-human CD23, Brilliant Violet 421™ anti-human CD23, TotalSeq™-A0897 anti-human CD23, TotalSeq™-C0897 anti-human CD23, TotalSeq™-B0897 anti-human CD23, TotalSeq™-D0897 anti-human CD23

Product Data



Typical results from human peripheral blood lymphocytes stained either with EBVC-5 FITC used at 5 μ L/test (filled histogram) or with an isotype control (dashed histogram).

For research use only. Not for resale. BioLegend will not be held responsible for patent infringement or other violations that may occur with the use of our products.

*These products may be covered by one or more Limited Use Label Licenses (see the BioLegend Catalog or our website, www.biolegend.com/ordering#license). BioLegend products may not be transferred to third parties, resold, modified for resale, or used to manufacture commercial products, reverse engineer functionally similar materials, or to provide a service to third parties without written approval of BioLegend. By use of these products you accept the terms and conditions of all applicable Limited Use Label Licenses.

BioLegend Inc., 8999 BioLegend Way, San Diego, CA 92121 www.biolegend.com
Toll-Free Phone: 1-877-Bio-Legend (246-5343) Phone: (858) 768-5800 Fax: (877) 455-9587

