

GMP PE anti-human CD24 Antibody

| | |
|------------------------|------------------------------------------------------------------------------------------------------------------------------------------------------------------------------------------------------------------------------------------------------------------------------------------------------------------------------------------------------------------------------------------------------------------------------------------------------------------------------------------|
| Catalog# / Size | 260166 / 100 tests |
| Clone | ML5 |
| Workshop | V CD24.5 |
| Other Names | Ly-52, Heat Stable Antigen (HSA), Nectadrin, BA-1 |
| Isotype | Mouse IgG2a, κ |
| Description | CD24 is a 35-45 kD glycosylphosphatidylinositol (GPI)-linked protein also known as heat stable antigen (HSA), BA-1, Ly-52, and nectadrin. It is expressed on the surface of B cells (but not plasma cells), granulocytes, follicular dendritic cells, and epithelial cells. CD24 may play a role in the regulation of B-cell proliferation and maturation. CD24 crosslinking induces a Ca ²⁺ flux in mature B cells. CD24 has been shown to interact with CD62P (P-selectin). |

Product Details

| | |
|-------------------------------|--------------------------------------------------------------------------------------------------------------------------------------------------------------------------------------------------------------------------------------------------------------------------------------------------------------------------------------------------------------------------------------------------------------------------------------------------------------------------------------------------------------------------------------------------------------------------------------------------------------------------------|
| Reactivity | Human |
| Antibody Type | Monoclonal |
| Host Species | Mouse |
| Formulation | Phosphate-buffered solution, pH 7.2, containing 0.09% sodium azide and 0.2% (w/v) BSA (origin USA) and a stabilizer |
| Preparation | The antibody was purified by affinity chromatography and conjugated with PE under optimal conditions. |
| Concentration | 200 µg/mL |
| Storage & Handling | The antibody solution should be stored undiluted between 2°C and 8°C, and protected from prolonged exposure to light. Do not freeze. |
| Application | FC - Quality tested |
| Recommended Usage | Each lot of this antibody is quality control tested by immunofluorescent staining with flow cytometric analysis . For flow cytometric staining, the suggested use of this reagent is 5 µL per million cells in 100 µL staining volume or 5 µL per 100 µL of whole blood. It is recommended that the reagent be titrated for optimal performance for each application. |
| Excitation Laser | Blue Laser (488 nm) Green Laser (532 nm)/Yellow-Green Laser (561 nm) |
| Application Notes | Additional reported applications (for the relevant formats) include: immunofluorescence microscopy ³ . |
| Application References | <ol style="list-style-type: none">Schlossman S, <i>et al.</i> Eds. 1995. Leukocyte Typing V: White Cell Differentiation Antigens. Oxford University Press. New York.McMichael A, <i>et al.</i> 1987. Leucocyte Typing III. Oxford University Press. New York.Yang GP, <i>et al.</i> 1999. <i>Nucleic Acids Research</i> 27:1517. (IF)Kristiansen G, <i>et al.</i> 2003. <i>Clin. Cancer Res.</i> 9:4906. (FC) |
| Disclaimer | <p>GMP RUO Flow Cytometry Antibodies. BioLegend GMP RUO fluorophore conjugated antibodies are manufactured in a dedicated GMP facility and compliant with ISO 13485:2016. For research use only. Not for use in diagnostic or therapeutic procedures. Our processes include:</p> <ul style="list-style-type: none">• Batch-to-batch consistency• Material traceability• Documented procedures• Documented employee training• Equipment maintenance and monitoring records• Lot-specific certificates of analysis• Quality audits per ISO 13485:2016 |

- QA review of released products

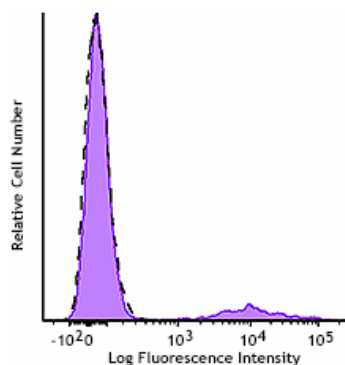
Antigen Details

| | |
|---------------------------|--------------------------------------------------------------------------------------------------|
| Structure | GPI-linked glycoprotein, 35-45 kD |
| Distribution | B cells, granulocytes, epithelial cells |
| Function | B cell proliferation and differentiation |
| Ligand/Receptor | CD62P (P-Selectin) |
| Cell Type | B cells, Epithelial cells, Granulocytes |
| Biology Area | Immunology |
| Molecular Family | CD Molecules |
| Antigen References | 1. Schlossman S, <i>et al.</i> Eds. 1995. Leukocyte Typing V. Oxford University Press. New York. |
| Gene ID | 100133941 |

Other Formats

FITC anti-human CD24, PE anti-human CD24, Purified anti-human CD24, Alexa Fluor® 488 anti-human CD24, Alexa Fluor® 647 anti-human CD24, PerCP/Cyanine5.5 anti-human CD24, APC anti-human CD24, PE/Cyanine7 anti-human CD24, Brilliant Violet 421™ anti-human CD24, Brilliant Violet 605™ anti-human CD24, PerCP anti-human CD24, Brilliant Violet 510™ anti-human CD24, Purified anti-human CD24 (Maxpar® Ready), Biotin anti-human CD24, APC/Cyanine7 anti-human CD24, PE/Dazzle™ 594 anti-human CD24, Brilliant Violet 711™ anti-human CD24, TotalSeq™-A0180 anti-human CD24, APC/Fire™ 750 anti-human CD24, Brilliant Violet 785™ anti-human CD24, TotalSeq™-C0180 anti-human CD24, TotalSeq™-B0180 anti-human CD24, PE/Cyanine5 anti-human CD24, TotalSeq™-D0180 anti-human CD24

Product Data



Typical results from human peripheral blood lymphocytes stained either with ML5 PE used at 5 μ L/test (filled histogram) or with an isotype control (open histogram).

For research use only. Not for resale. BioLegend will not be held responsible for patent infringement or other violations that may occur with the use of our products.

*These products may be covered by one or more Limited Use Label Licenses (see the BioLegend Catalog or our website, www.biolegend.com/ordering#license). BioLegend products may not be transferred to third parties, resold, modified for resale, or used to manufacture commercial products, reverse engineer functionally similar materials, or to provide a service to third parties without written approval of BioLegend. By use of these products you accept the terms and conditions of all applicable Limited Use Label Licenses.

BioLegend Inc., 8999 BioLegend Way, San Diego, CA 92121 www.biolegend.com
Toll-Free Phone: 1-877-Bio-Legend (246-5343) Phone: (858) 768-5800 Fax: (877) 455-9587