

GMP PE anti-human CD2 Antibody

Catalog# / Size	260092 / 100 tests
Clone	TS1/8
Workshop	V S025
Other Names	LFA-2, T11, SRBC-R
Isotype	Mouse IgG1, κ
Description	CD2 is a 50 kD type I transmembrane glycoprotein also known as LFA-2, T11, and sheep red blood cell receptor (SRBC-R). This immunoglobulin superfamily member is expressed on thymocytes, T lymphocytes, NK cells, and thymic B cell subsets. The major ligand for CD2 is CD58 (also known as LFA-3). CD2 has also been reported to bind CD48, CD59, and CD15. CD2 plays a critical role in alternative T cell activation, T cell signaling, and cell-cell adhesion.

Product Details

Reactivity	Human
Antibody Type	Monoclonal
Host Species	Mouse
Formulation	Phosphate-buffered solution, pH 7.2, containing 0.09% sodium azide, 0.2% (w/v) BSA (origin USA), and a stabilizer
Preparation	The antibody was purified by affinity chromatography and conjugated with PE under optimal conditions.
Concentration	25 μ g/mL
Storage & Handling	The antibody solution should be stored undiluted between 2°C and 8°C, and protected from prolonged exposure to light. Do not freeze.
Application	FC - Quality tested
Recommended Usage	Each lot of this antibody is quality control tested by immunofluorescent staining with flow cytometric analysis . For flow cytometric staining, the suggested use of this reagent is 5 μ L per million cells in 100 μ L staining volume or 5 μ L per 100 μ L of whole blood. It is recommended that the reagent be titrated for optimal performance for each application.
Excitation Laser	Blue Laser (488 nm) Green Laser (532 nm)/Yellow-Green Laser (561 nm)
Application Notes	Additional reported applications (for the relevant formats) include: blocking of T cell activation, and partial blocking of B cell costimulation ² . The Ultra-LEAF™ purified antibody (Endotoxin < 0.01 EU/ μ g, Azide-Free, 0.2 μ m filtered) is recommended for functional assays (Cat. Nos. 309235 & 309236).
Application References	1. Schlossman S, <i>et al.</i> Eds.1995. Leucocyte Typing V Oxford University Press. New York. 2. Hughes CCW, <i>et al.</i> 1996. <i>J. Biol. Chem.</i> 271:5369.
(PubMed link indicates BioLegend citation)	
Disclaimer	GMP RUO Flow Cytometry Antibodies. BioLegend GMP RUO fluorophore conjugated antibodies are manufactured in a dedicated GMP facility and compliant with ISO 13485:2016. For research use only. Not for use in diagnostic or therapeutic procedures. Our processes include: <ul style="list-style-type: none"> • Batch-to-batch consistency • Material traceability • Documented procedures

- Documented employee training
- Equipment maintenance and monitoring records
- Lot-specific certificates of analysis
- Quality audits per ISO 13485:2016
- QA review of released products

Antigen Details

Structure	Ig superfamily, type I transmembrane glycoprotein, 50 kD
Distribution	T cells, NK cells, thymocytes, and thymic B cell subsets
Function	T cell activation, adhesion
Ligand/Receptor	CD58 (LFA-3), CD48, CD59, CD15
Cell Type	B cells, NK cells, T cells, Thymocytes
Biology Area	Costimulatory Molecules, Immunology
Molecular Family	CD Molecules
Antigen References	<ol style="list-style-type: none"> 1. Bell G, <i>et al.</i> 1995. <i>J Immunol.</i> 155:2805-7. 2. Bierer B, <i>et al.</i> 1989. <i>Annu Rev Immunol.</i> 7:579-99. 3. Moingeon P, <i>et al.</i> 1989. <i>Immunol Rev.</i> 111:111-44.

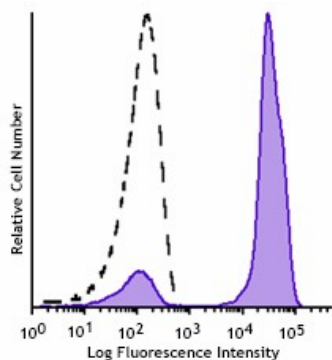
Gene ID [914](#)

Related Protocols

[Cell Surface Flow Cytometry Staining Protocol](#)

Other Formats

FITC anti-human CD2, PE anti-human CD2, Purified anti-human CD2, Pacific Blue™ anti-human CD2, PE/Cyanine7 anti-human CD2, Brilliant Violet 421™ anti-human CD2, Purified anti-human CD2 (Maxpar® Ready), PerCP/Cyanine5.5 anti-human CD2, APC anti-human CD2, APC/Fire™ 750 anti-human CD2, Alexa Fluor® 700 anti-human CD2, TotalSeq™-A0367 anti-human CD2, TotalSeq™-C0367 anti-human CD2, TotalSeq™-B0367 anti-human CD2, Ultra-LEAF™ Purified anti-human CD2, APC/Cyanine7 anti-human CD2, TotalSeq™-D0367 anti-human CD2



Typical results from human peripheral blood lymphocytes stained either with TS1/8 PE used at 5 μ L/test (filled histogram) or with an isotype control (open histogram).

Symbols Glossary*

Symbol	Meaning	Symbol Title	Symbol No.	Symbol	Meaning	Symbol Title	Symbol No.
	Catalog number	Catalogue number	5.1.6		Indicates the need for the user to consult the instructions for use.	Consult instructions for use	5.4.3
	Indicates the temperature limits to which the medical device can be safely exposed.	Temperature limit	5.3.7		Indicates a medical device that needs protection from light sources.	Keep away from sunlight	5.3.2
	Indicates the upper limit of temperature to which the medical device can be safely exposed.	Upper limit of temperature	5.3.6		Indicates the date after which the medical device is not to be used.	Use-by date	5.1.4
	Indicates the medical device manufacturer.	Manufacturer	5.1.1		Indicates the authorized representative in the European Community.	Authorized representative in the European Community	5.1.2
	Indicates the manufacturer's batch code so that the batch or lot can be identified.	Batch code	5.1.5		Indicates a medical device that is intended to be used as an in vitro diagnostic medical device.	<i>In vitro</i> diagnostic medical device	5.5.1

* Symbol information is from EN ISO 15223-1:2016 Medical devices – Symbols to be used with medical device labels, labelling and information to be supplied – Part 1: General requirements

For research use only. Not for resale. BioLegend will not be held responsible for patent infringement or other violations that may occur with the use of our products.

*These products may be covered by one or more Limited Use Label Licenses (see the BioLegend Catalog or our website, www.biolegend.com/ordering#license). BioLegend products may not be transferred to third parties, resold, modified for resale, or used to manufacture commercial products, reverse engineer functionally similar materials, or to provide a service to third parties without written approval of BioLegend. By use of these products you accept the terms and conditions of all applicable Limited Use Label Licenses.

BioLegend Inc., 8999 BioLegend Way, San Diego, CA 92121 www.biolegend.com
 Toll-Free Phone: 1-877-Bio-Legend (246-5343) Phone: (858) 768-5800 Fax: (877) 455-9587