

## GMP FITC anti-human CD15 (SSEA-1) Antibody

<b>Catalog# / Size</b>	260082 / 100 tests
<b>Clone</b>	W6D3
<b>Workshop</b>	HCDM listed
<b>Other Names</b>	Lewis X, 3-FAL, 3-FL, LNFP III, Lex, SSEA-1, SSEA1, X-hapten, FUT4, ELFT, FCT3A, FUTIV, FUC-TIV
<b>Isotype</b>	Mouse IgG1, $\kappa$
<b>Description</b>	CD15 is 3-fucosyl-N-acetyllactosamine (3-FAL) also known as Lewis X, 3-FAL, X-hapten, and SSEA-1. CD15 is expressed on granulocytes and monocytes. It has also been shown to be expressed on Langerhans cells. CD15 has been implicated in adhesion as well as chemotaxis, phagocytosis, and bactericidal activity.

### Product Details

---

<b>Reactivity</b>	Human
<b>Antibody Type</b>	Monoclonal
<b>Host Species</b>	Mouse
<b>Immunogen</b>	WERI-RB-1 retinoblastoma cell line
<b>Formulation</b>	Phosphate-buffered solution, pH 7.2, containing 0.09% sodium azide and 0.2% (w/v) BSA (origin USA).
<b>Preparation</b>	The antibody was purified by affinity chromatography and conjugated with FITC under optimal conditions.
<b>Concentration</b>	200 $\mu\text{g}/\text{mL}$
<b>Storage &amp; Handling</b>	The antibody solution should be stored undiluted between 2°C and 8°C, and protected from prolonged exposure to light. <b>Do not freeze.</b>
<b>Application</b>	<a href="#">FC - Quality tested</a>
<b>Recommended Usage</b>	Each lot of this antibody is quality control tested by <a href="#">immunofluorescent staining with flow cytometric analysis</a> . For flow cytometric staining, the suggested use of this reagent is 5 $\mu\text{L}$ per million cells in 100 $\mu\text{L}$ staining volume or 5 $\mu\text{L}$ per 100 $\mu\text{L}$ of whole blood. It is recommended that the reagent be titrated for optimal performance for each application.
<b>Excitation Laser</b>	Blue Laser (488 nm)
<b>Disclaimer</b>	<b>GMP RUO Flow Cytometry Antibodies.</b> BioLegend GMP RUO fluorophore conjugated antibodies are manufactured in a dedicated GMP facility and compliant with ISO 13485:2016. For research use only. Not for use in diagnostic or therapeutic procedures. Our processes include: <ul style="list-style-type: none"><li>• Batch-to-batch consistency</li><li>• Material traceability</li><li>• Documented procedures</li><li>• Documented employee training</li><li>• Equipment maintenance and monitoring records</li><li>• Lot-specific certificates of analysis</li><li>• Quality audits per ISO 13485:2016</li><li>• QA review of released products</li></ul>

### Antigen Details

---

<b>Structure</b>	Poly-N-acetyllactosamine
<b>Distribution</b>	Neutrophils, eosinophils, monocytes
<b>Function</b>	Adhesion
<b>Cell Type</b>	Embryonic Stem Cells, Eosinophils, Neutrophils
<b>Biology Area</b>	Cell Biology, Immunology, Neuroscience, Neuroscience Cell Markers, Stem Cells
<b>Molecular Family</b>	CD Molecules
<b>Antigen References</b>	1. Stocks SC, <i>et al.</i> 1990. <i>Biochem J.</i> 268:275-80.
<b>Gene ID</b>	<a href="#">2526</a>

---

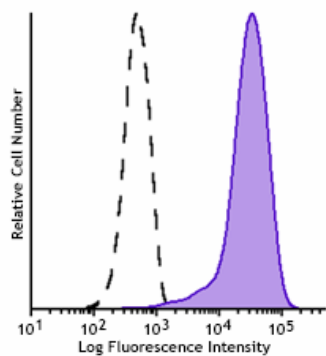
## Related Protocols

[Cell Surface Flow Cytometry Staining Protocol](#)

---

## Other Formats

Brilliant Violet 785™ anti-human CD15 (SSEA-1), Purified anti-human CD15 (SSEA-1), FITC anti-human CD15 (SSEA-1), PE anti-human CD15 (SSEA-1), APC anti-human CD15 (SSEA-1), Alexa Fluor® 488 anti-human CD15 (SSEA-1), Alexa Fluor® 647 anti-human CD15 (SSEA-1), PE/Cyanine5 anti-human CD15 (SSEA-1), PerCP anti-human CD15 (SSEA-1), PerCP/Cyanine5.5 anti-human CD15 (SSEA-1), Pacific Blue™ anti-human CD15 (SSEA-1), Alexa Fluor® 700 anti-human CD15 (SSEA-1), Brilliant Violet 510™ anti-human CD15 (SSEA-1), PE/Cyanine7 anti-human CD15 (SSEA-1), Brilliant Violet 605™ anti-human CD15 (SSEA-1), Brilliant Violet 650™ anti-human CD15 (SSEA-1), Purified anti-human CD15 (SSEA-1) (Maxpar® Ready), PE/Dazzle™ 594 anti-human CD15 (SSEA-1), Brilliant Violet 421™ anti-human CD15 (SSEA-1), APC/Fire™ 750 anti-human CD15 (SSEA-1), TotalSeq™-A0392 anti-human CD15 (SSEA-1), Brilliant Violet 711™ anti-human CD15 (SSEA-1), APC/Cyanine7 anti-human CD15 (SSEA-1), TotalSeq™-B0392 anti-human CD15 (SSEA-1), TotalSeq™-C0392 anti-human CD15 (SSEA-1), Spark Violet™ 538 anti-human CD15 (SSEA-1) Antibody, APC/Fire™ 810 anti-human CD15 (SSEA-1) Antibody, TotalSeq™-D0392 anti-human CD15 (SSEA-1)



Typical results from human peripheral blood granulocytes stained either with W6D3 FITC used at 5  $\mu$ L/test (filled histogram) or with an isotype control (open histogram).

### Symbols Glossary\*

Symbol	Meaning	Symbol Title	Symbol No.	Symbol	Meaning	Symbol Title	Symbol No.
	Catalog number	Catalogue number	5.1.6		Indicates the need for the user to consult the instructions for use.	Consult instructions for use	5.4.3
	Indicates the temperature limits to which the medical device can be safely exposed.	Temperature limit	5.3.7		Indicates a medical device that needs protection from light sources.	Keep away from sunlight	5.3.2
	Indicates the upper limit of temperature to which the medical device can be safely exposed.	Upper limit of temperature	5.3.6		Indicates the date after which the medical device is not to be used.	Use-by date	5.1.4
	Indicates the medical device manufacturer.	Manufacturer	5.1.1		Indicates the authorized representative in the European Community.	Authorized representative in the European Community	5.1.2
	Indicates the manufacturer's batch code so that the batch or lot can be identified.	Batch code	5.1.5		Indicates a medical device that is intended to be used as an in vitro diagnostic medical device.	<i>In vitro</i> diagnostic medical device	5.5.1

\* Symbol information is from EN ISO 15223-1:2016 Medical devices – Symbols to be used with medical device labels, labelling and information to be supplied – Part 1: General requirements

For research use only. Not for resale. BioLegend will not be held responsible for patent infringement or other violations that may occur with the use of our products.

\*These products may be covered by one or more Limited Use Label Licenses (see the BioLegend Catalog or our website, [www.biolegend.com/ordering#license](http://www.biolegend.com/ordering#license)). BioLegend products may not be transferred to third parties, resold, modified for resale, or used to manufacture commercial products, reverse engineer functionally similar materials, or to provide a service to third parties without written approval of BioLegend. By use of these products you accept the terms and conditions of all applicable Limited Use Label Licenses.

BioLegend Inc., 8999 BioLegend Way, San Diego, CA 92121 [www.biolegend.com](http://www.biolegend.com)  
 Toll-Free Phone: 1-877-Bio-Legend (246-5343) Phone: (858) 768-5800 Fax: (877) 455-9587