

GMP FITC anti-human CD45RA Antibody

Catalog# / Size	260044 / 100 tests
Clone	HI100
Workshop	IV N906
Other Names	GP180, L-CA, LCA, LY5, T200, PTPRC
Isotype	Mouse IgG2b, κ
Description	CD45RA is a 205-220 kD single chain type I glycoprotein. It is an exon 4 splice variant of the tyrosine phosphatase CD45. The CD45RA isoform is expressed on resting/naïve T cells, medullary thymocytes, B cells and monocytes. CD45RA enhances both T cell receptor and B cell receptor signaling. CD45 non-covalently associates with lymphocyte phosphatase-associated phosphoprotein (LPAP) on T and B lymphocytes. CD45 has been reported to be associated with several other cell surface antigens including CD1, CD2, CD3, and CD4. CD45 has also been reported to bind galectin-1. CD45 isoform expression can change in response to cytokines.

Product Details

Reactivity	Human
Antibody Type	Monoclonal
Host Species	Mouse
Formulation	Phosphate-buffered solution, pH 7.2, containing 0.09% sodium azide and 0.2% (w/v) BSA (origin USA).
Preparation	The antibody was purified by affinity chromatography, and conjugated with FITC under optimal conditions.
Concentration	200 μ g/mL
Storage & Handling	The antibody solution should be stored undiluted between 2°C and 8°C, and protected from prolonged exposure to light. Do not freeze.
Application	FC - Quality tested
Recommended Usage	Each lot of this antibody is quality control tested by immunofluorescent staining with flow cytometric analysis . For flow cytometric staining, the suggested use of this reagent is 5 μ L per million cells in 100 μ L staining volume or 5 μ L per 100 μ L of whole blood. It is recommended that the reagent be titrated for optimal performance for each application.
Excitation Laser	Blue Laser (488 nm)
Application Notes	Additional reported applications (for relevant formats of this clone) include: inhibition of CD45 functions ² , immunohistochemical staining of frozen tissue sections ³ and formalin-fixed paraffin-embedded tissue sections ⁴ , and immunocytochemistry ^{15,16} .
Application References	<ol style="list-style-type: none"> Knapp W, <i>et al.</i> 1989. Leucocyte Typing IV. Oxford University Press. New York. Yamada T, <i>et al.</i> 2002. <i>J. Biol. Chem.</i> 277:28830. (WB, Block) Weninger W, <i>et al.</i> 2003 <i>J. Immunol.</i> 170:4638. (IHC-F) Imanguli MM, <i>et al.</i> 2009. <i>Blood.</i> 113:3620 (IHC-P) Roque S, <i>et al.</i> 2007. <i>J. Immunol.</i> 178:8028. (FC) PubMed Smeltz RB. 2007. <i>J. Immunol.</i> 178:4786. (FC) PubMed Palendira U, <i>et al.</i> 2008. <i>Blood</i> (FC) PubMed Kuttruff S, <i>et al.</i> 2009. <i>Blood</i> 113:358. (FC) PubMed Thakral D, <i>et al.</i> 2008. <i>J. Immunol.</i> 180:7431. (FC) PubMed Alanio C, <i>et al.</i> 2010. <i>Blood</i> 115:3718. (FC) PubMed Iannello A, <i>et al.</i> 2010. <i>J. Immunol.</i> 184:114. (FC) PubMed
(PubMed link indicates BioLegend citation)	

12. Yoshino N, *et al.* 2000. *Exp. Anim. (Tokyo)* 49:97. (FC)
13. Guereau-de-Arellan M, *et al.* 2011. *Brain.* 134:3578. [PubMed](#)
14. Canque B, *et al.* 2000. *Blood* 96:3748. (ICC)
15. Imanuli MM, *et al.* 2009. *Blood* 13:3620. (ICC)
16. Stoeckius M, *et al.* 2017. *Nat. Methods.* 14:865. (PG)
17. Peterson VM, *et al.* 2017. *Nat. Biotechnol.* 35:936. (PG)

Disclaimer

GMP RUO Flow Cytometry Antibodies. BioLegend GMP RUO fluorophore conjugated antibodies are manufactured in a dedicated GMP facility and compliant with ISO 13485:2016. For research use only. Not for use in diagnostic or therapeutic procedures. Our processes include:

- Batch-to-batch consistency
- Material traceability
- Documented procedures
- Documented employee training
- Equipment maintenance and monitoring records
- Lot-specific certificates of analysis
- Quality audits per ISO 13485:2016
- QA review of released products

Antigen Details

Structure	Tyrosine phosphatases, type I transmembrane (exon 4 splicing of CD45 gene), 205-220 kD
Distribution	B cells, naïve T cells, monocytes
Function	Enhances TCR and BCR signaling
Ligand/Receptor	Galectin-1, CD2, CD3, CD4
Cell Type	B cells, Monocytes, T cells, Tregs
Biology Area	Cell Biology, Immunology, Inhibitory Molecules, Neuroscience, Neuroscience Cell Markers
Molecular Family	CD Molecules
Antigen References	<ol style="list-style-type: none"> 1. Thomas M. 1989. <i>Annu. Rev. Immunol.</i> 7:339. 2. Trowbridge I, <i>et al.</i> 1994. <i>Annu. Rev. Immunol.</i> 12:85.
Gene ID	5788

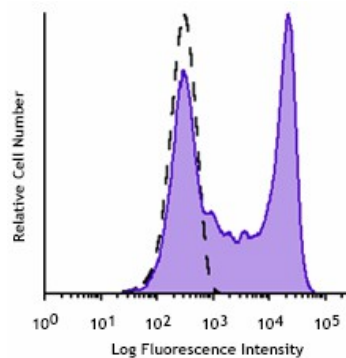
Related Protocols

[Cell Surface Flow Cytometry Staining Protocol](#)

Other Formats

APC anti-human CD45RA, Biotin anti-human CD45RA, FITC anti-human CD45RA, PE anti-human CD45RA, PE/Cyanine5 anti-human CD45RA, Purified anti-human CD45RA, Alexa Fluor® 488 anti-human CD45RA, Alexa Fluor® 647 anti-human CD45RA, Pacific Blue™ anti-human CD45RA, Alexa Fluor® 700 anti-human CD45RA, PerCP/Cyanine5.5 anti-human CD45RA, PE/Cyanine7 anti-human CD45RA, APC/Cyanine7 anti-human CD45RA, Brilliant Violet 421™ anti-human CD45RA, Brilliant Violet 570™ anti-human CD45RA, Brilliant Violet 605™ anti-human CD45RA, Brilliant Violet 650™ anti-human CD45RA, Brilliant Violet 711™ anti-human CD45RA, Brilliant Violet 785™ anti-human CD45RA, Brilliant Violet 510™ anti-human CD45RA, Purified anti-human CD45RA (Maxpar® Ready), PE/Dazzle™ 594 anti-human CD45RA, APC/Fire™ 750 anti-human CD45RA, PerCP anti-human CD45RA, TotalSeq™-A0063 anti-human CD45RA, Alexa Fluor® 594 anti-human CD45RA, TotalSeq™-B0063 anti-human CD45RA, TotalSeq™-C0063 anti-human CD45RA, Brilliant Violet 750™ anti-human CD45RA, Spark NIR™ 685 anti-human CD45RA, PE/Fire™ 640 anti-human CD45RA, PE/Fire™ 700 anti-human CD45RA Antibody, Spark YG™ 581 anti-human CD45RA, TotalSeq™-D0063 anti-human CD45RA, Spark Violet™ 423 anti-human CD45RA

Product Data



Typical results from human peripheral blood lymphocytes stained either with HI100 FITC used at 5 μ L/test (solid line) or with an isotype control (dotted line).

Symbols Glossary*

Symbol	Meaning	Symbol Title	Symbol No.	Symbol	Meaning	Symbol Title	Symbol No.
	Catalog number	Catalogue number	5.1.6		Indicates the need for the user to consult the instructions for use.	Consult instructions for use	5.4.3
	Indicates the temperature limits to which the medical device can be safely exposed.	Temperature limit	5.3.7		Indicates a medical device that needs protection from light sources.	Keep away from sunlight	5.3.2
	Indicates the upper limit of temperature to which the medical device can be safely exposed.	Upper limit of temperature	5.3.6		Indicates the date after which the medical device is not to be used.	Use-by date	5.1.4
	Indicates the medical device manufacturer.	Manufacturer	5.1.1		Indicates the authorized representative in the European Community.	Authorized representative in the European Community	5.1.2
	Indicates the manufacturer's batch code so that the batch or lot can be identified.	Batch code	5.1.5		Indicates a medical device that is intended to be used as an in vitro diagnostic medical device.	<i>In vitro</i> diagnostic medical device	5.5.1

* Symbol information is from EN ISO 15223-1:2016 Medical devices – Symbols to be used with medical device labels, labelling and information to be supplied – Part 1: General requirements

For research use only. Not for resale. BioLegend will not be held responsible for patent infringement or other violations that may occur with the use of our products.

*These products may be covered by one or more Limited Use Label Licenses (see the BioLegend Catalog or our website, www.biolegend.com/ordering#license). BioLegend products may not be transferred to third parties, resold, modified for resale, or used to manufacture commercial products, reverse engineer functionally similar materials, or to provide a service to third parties without written approval of BioLegend. By use of these products you accept the terms and conditions of all applicable Limited Use Label Licenses.

BioLegend Inc., 8999 BioLegend Way, San Diego, CA 92121 www.biolegend.com
Toll-Free Phone: 1-877-Bio-Legend (246-5343) Phone: (858) 768-5800 Fax: (877) 455-9587